



News from the RHS Lindley Library

DIG FOR VICTORY

A large and heavy wooden box containing material designed for a war-time touring exhibition to support the Dig for Victory campaign, was recently returned to the RHS after nearly 70 years. It is possibly the only surviving example (number 18) of many. The box comprises 61 display boards of mounted photographs demonstrating how to grow, harvest and store a wide range of vegetables; build a compost heap and make fertiliser. Directions are given for setting up the display (requiring 55ft of wall space), and returning the box by 'passenger train only'. The instructions are dated 23rd September 1943 but the box may be earlier.

During WWII these displays were sent all over the country and the many labels on the lid tell us this particular box travelled widely on the then Southern Railway and to Lancashire.

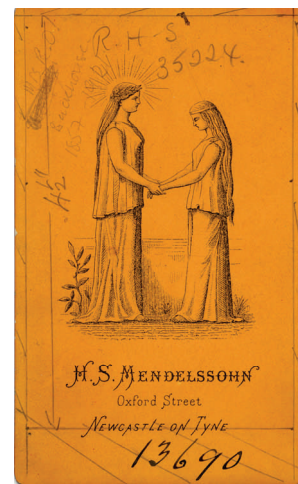
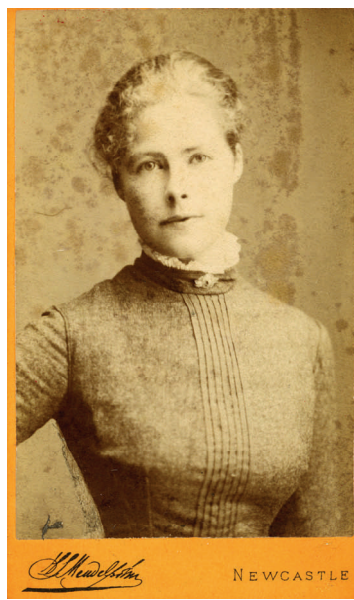
As part of our ongoing preservation programme and to bring our collection to a wider audience we plan to digitise the panels and to recreate the original display in an interpretative exhibition at Lindley Library Wisley next spring.



Photo credit Armando Ribeiro/
RHS Lindley Library

CARTE DE VISITE: DIGITISING THE LIBRARY COLLECTION

The RHS Lindley Library has recently completed digitisation of over 700 photographs from its historically important Carte de Visite collection. The Carte de Visite photograph was developed in France in 1854: small printed portraits were mounted onto card backs to a standard size matching that of the traditional calling card. They became popular and collectible after photographs of Emperor Napoleon III were published in the format in 1859, sparking a craze for people to have their own Carte portraits made, and to collect those of friends, royalty and celebrities. Special albums were created to display the cards, and became the fore-runner of the modern family photo album. The Lindley Library collection came from examples collected by the RHS Secretary Andrew Murray (1812-1878) and Richard Dean (1830-1905), seedsman, market gardener, and horticultural journalist. Over the next few months the Lindley Library carte collection will be made available to view online at www.rhsimages.co.uk.



Left and above Front and back view of the carte de visite of plant hybridizer Sarah Elizabeth Backhouse (1857-1921).

Joyce Stewart Bequest & Book Sale

Joyce's magnificent bequest to the Lindley Library has added a further 220 titles to the collection, while the sale of duplicate books at Wisley has raised over £4000. There are still over 200 items in our sale, covering general horticultural subjects as well as orchids. See over for library opening times in the run up to Christmas and after the New Year.



Above Three of six exclusive orchid greetings cards featuring images from the Lindley Library, designed to complement the orchid book sale.

News from the RHS Lindley Library

EXHIBITION OF ROYAL SIGNATURES

The Lindley Library holds a unique collection of 38 illuminated royal signatures, the earliest dating back to 1816. Each piece, painted largely in watercolour on vellum, is decorated with floral borders, and royal and personal motifs relevant to the individual's life. British monarchs and royalty from overseas were invited to become Honorary Members, Fellows or Patrons of the Royal Horticultural Society: HM Queen Elizabeth II added her name in 1952. Prestigious botanical artists such as William Hooker, Walter Hood Fitch and Augusta Withers



paid homage to the Society's royal patrons with the creation of these fascinating pieces.

Selected signatures will be featured in an interpretative display celebrating the Society's long association with the Royal Family. See the display at the London Botanical Art Show 16-17 March 2012, and at Lindley Library Wisley from 22 May to 10 September.

Left Her Majesty Queen Charlotte (1744-1818): watercolour on vellum with ink calligraphy, artist unknown.

Fire at London: update

The London lending service was restarted in September, making books available to collect from the library on designated afternoons, or sending them to Lindley Library Wisley for collection. Within the library, structural work has begun, including removal and reconstruction of the stack room ceiling. The full extent of the damage to the stack room was not originally apparent. As yet we do not have a date for reopening the library, and regret that none of London's research or art material is accessible. We are sorry for the problems this is causing for researchers. Please see our website for more details of the services currently in place.



Above Specialist conservators working under emergency lighting.

Holiday Reading...some new books

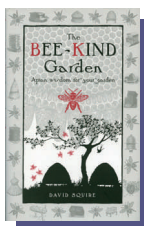
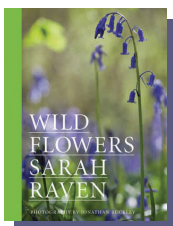
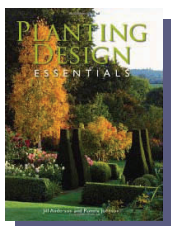
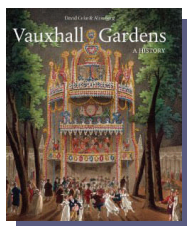
Uncover the history of London's famous pleasure garden, in **Vauxhall Gardens** by Alan Borg & David E. Coke, the first book of its kind in over fifty years: 'a major contribution to the study of London entertainments, art, music, sculpture, class and ideology.'

Written by professional garden designers, Pamela Johnson & Jill Anderson, **Planting Design Essentials** is a 'step-by-step guide for successful long-term planting' which includes techniques to maintain the design as it matures.

Wild Flowers is the result of Sarah Raven's extensive travels around the British Isles searching for 500 of Britain's most interesting wild flowers. Organised by habitat, Sarah's 'authoritative, captivating species descriptions' and Jonathan Buckley's 'stunning plant portraits' aim to encourage us 'to fall in love with wild flowers' and re-awaken our connection to the natural world.

The Bee-kind Garden by David Squire, for would-be wildlife gardeners, 'a gentle introduction to the world of honeybees, with a surprising amount of...information about gardening for bees.'

See the full list on the library catalogue.



RHS Lindley Library Winter 2011

London

We regret the library is temporarily closed following the fire in July.

General enquiries: Lindley Library Wisley or email library@rhs.org.uk.

Commercial or research image enquiries via www.rhsimages.co.uk until further notice.

Wisley

RHS Garden Wisley

Surrey GU23 6QB

T: 01483 212428

E: library.wisley@rhs.org.uk

Open 11am-4pm daily

Christmas

Closed 12 Dec - 2 Jan 2012 inclusive
Re-opens 11am 3 Jan 2012

Garden libraries also at Harlow Carr, Hyde Hall and Rosemoor - check our website for opening times

To join the library newsletter emailing list - just send your name and email address to library.news@rhs.org.uk

RHS Lindley Library

London 80 Vincent Square, London SW1P 2PE Tel 020 7821 3050 Email library.london@rhs.org.uk

Wisley RHS Garden Wisley, Woking, Surrey GU23 6QB Tel 01483 212428 Email library.wisley@rhs.org.uk

also at RHS gardens Harlow Carr, Hyde Hall and Rosemoor

www.rhs.org.uk/libraries