

RHS GARDEN HYDE HALL

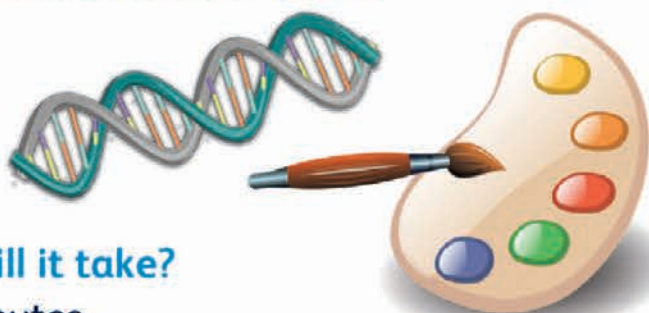
Self Guided Activity Ideas for Schools



Foundation & Key Stage 1

Colour Matching

Curricular Links: Science and Art



How long will it take?

15 to 30 minutes

What do we need to bring?

Colour charts in shades of green
or different flower colours

How do we do it?

Give each child or pair of
children a colour chart and as
you walk around the garden,
match the colours on the chart
to the colours in the garden.

Where can we do it?

All around the garden.

When can we do it?

Spring, summer or autumn



Follow-up Ideas for School

- Mix different shades and tints of green and create plant paintings or patterns.
- Explore how mixing different colours produces new colours.
- Ask the children to create their own colours then make up a special name plant related name for it - for example 'poppy red' or 'lavender purple'.