

# RHS Garden Harlow Carr

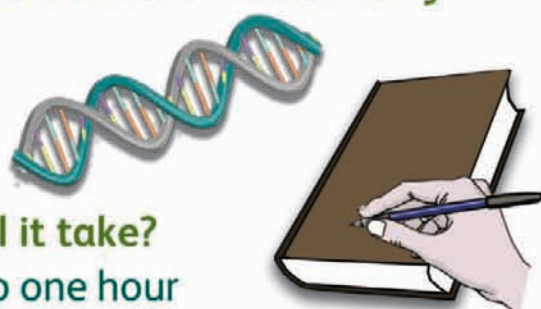
## Self Guided Activity Ideas for Schools



### Key Stage 2

## Leaf Bag ID

.....  
*Curricular Links: Science and Literacy*



**How long will it take?**  
30 minutes to one hour

**What do we need to bring?**  
Leaf bags (PDF download)

**How do we do it?**  
Give the children leaf collecting bags and walk around the gardens and woodland. Collect and identify the leaves you find using the pictures and names on the bags.

**Where can we do it?**  
Around the garden or the woodland.

**When can we do it?**  
All year round.



### **Remember...**

Only collect leaves from the floor as if it's still on the tree, its still needed.

**Look at the different types of leaves.**



Pointed



Pinnate



Oval



Lobed

# Discover, inspire, involve, grow