

# Events

A selection of RHS Recommended Events throughout January and February 2010 with reduced-price tickets for RHS members



Inspiring and practical events led by expert plantspeople and award-winning horticulturists to help you get the most out of your gardening

Sponsored by



For more events visit [www.rhs.org.uk/whatson](http://www.rhs.org.uk/whatson)

# How to book

All tickets must be booked in advance unless otherwise stated in the event listings.

For tickets to events at RHS Gardens Wisley, Rosemoor, Hyde Hall or Harlow Carr, events at nurseries and gardens (unless otherwise stated), and Growing for Success talks held in London, book in the following ways:

**BY TELEPHONE:** 0845 612 1253\* (0044 845 612 1253 from overseas)  
Please have your credit or debit card details to hand and quote code 'DE'  
(weekdays 9am–5pm).

**BY POST:** Events Booking, RHS Membership Dept, PO Box 313, London SW1P 2PE.  
Please enclose a cheque payable to 'Royal Horticultural Society', a membership number (if relevant) and daytime telephone number. State the date and title of the event, how many tickets you require and code 'DE'.

**PLEASE NOTE:** tickets will arrive within 10 days of receipt of payment. In the unlikely event that they fail to arrive, or you have a query about the tickets you have received, call Customer Services on 0845 612 1253\* (weekdays 9am–5pm).

- Tickets are non-refundable unless an event is cancelled.
- To book for **Growing for Success** talks that are not in London refer to the booking details given with individual listing entries.
- All information in this booklet correct at time of going to print.

## Further information

- To request a copy of the **RHS What's On** leaflet for your area, tel: 0845 062 1111\* or see: [www.rhs.org.uk/WhatsOn/Events/regional.htm](http://www.rhs.org.uk/WhatsOn/Events/regional.htm)
- Events Editor: Heather Greig  
Assistant Events Editor: Siân Thomas  
RHS, 80 Vincent Square, London SW1P 2PE.  
Tel: 0845 260 5000\*  
Email: [info@rhs.org.uk](mailto:info@rhs.org.uk)  
RHS Online: [www.rhs.org.uk](http://www.rhs.org.uk)
- More events can be found at:  
**[www.rhs.org.uk/whatson](http://www.rhs.org.uk/whatson)**

\*Calls charged at local rate

COVER IMAGES LEFT TO RIGHT:  
MARTIN HUGHES-JONES  
STEPHEN RECORD  
EAST BERGHOLT PLACE GARDEN



## Editor's choice

### Snowdrop time

Enjoy breathtaking displays of these dainty winter favourites, and find out more about their cultivation

- 4 Christie's Nursery, Angus.** Nurseryman Ian Christie hosts a Snowdrop Day at Brechin Castle, with visits to two special snowdrop sites
- 4 Scone Palace, Perthshire.** Stroll through massed drifts of naturalised *Galanthus nivalis* at this historic Scottish estate
- 7 East Bergholt Place, Suffolk.** See how snowdrops and other bulbs can be used to create early-spring interest
- 10 Benington Lordship, Hertfordshire.** Marvel at the sight of thousands of snowdrops carpeting the moat of a ruined Norman castle
- 10 Foxgrove Plants, Berkshire.** Learn more about *Galanthus*, from identification and cultivation to propagation via twin-scaling
- 11 RHS Garden Rosemoor, Devon.** Following a talk by 'galanthophile' Matt Bishop of the Garden House, take a walk to enjoy Rosemoor's drifts of snowdrops



For a home, car or travel insurance quote, find your local branch at [nfumutual.co.uk/rhs](http://nfumutual.co.uk/rhs) or call 0800 197 1284



We do right by you

NFU Mutual is The National Farmers Union Mutual Insurance Society Limited (No. 111982). Registered in England. Registered Office: Tiddington Road, Stratford upon Avon, Warwickshire CV37 7BJ. For security and training purposes, telephone calls may be recorded and monitored. Authorised and regulated by the Financial Services Authority. A member of the Association of British Insurers.

## Regional sections

Scotland 4

North West 5

North East 5

East Anglia 6

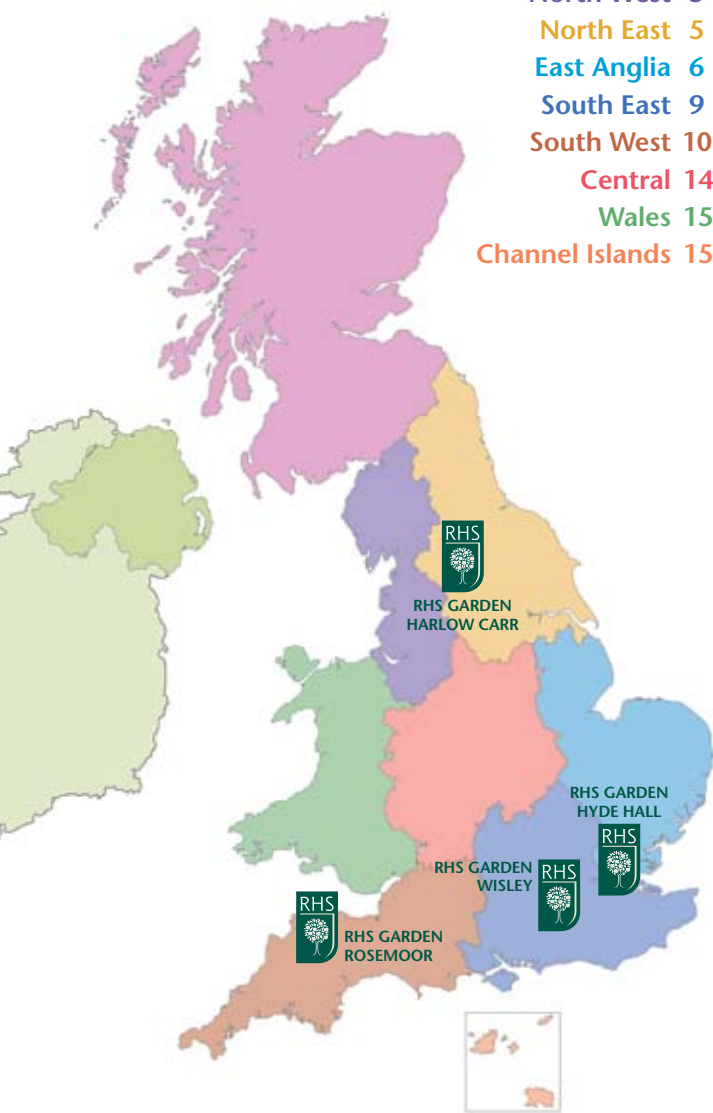
South East 9

South West 10

Central 14

Wales 15

Channel Islands 15



**RHS Recommended Events** take place across the UK at inspirational gardens, specialist nurseries and horticultural colleges. The RHS-subsidised Growing for Success talks featuring well-known speakers are also held at a range of venues across the UK. Turn to your region to find out what's on near you.

## RHS Flower Shows

Recorded information

line: 020 7649 1885

[www.rhs.org.uk](http://www.rhs.org.uk)

### **RHS London Plant and Design Show**

16–17 February (10am–7pm

16 Feb, 10am–5pm 17 Feb)

Lawrence and Lindley Halls,  
Greycoat Street, London SW1.

*Members FREE, non-members £5  
(£3 on 17 Feb)*

### **RHS London Orchid Show & RHS Botanical Art Show Preview Evening**

19 March 6.30–9pm

Lawrence Hall, Greycoat Street,  
London SW1.

*£10 (includes complimentary  
glass of wine and a return visit to  
the show over the weekend)*

### **RHS London Orchid Show & RHS Botanical Art Show**

20–21 March 10am–5pm

Lawrence Hall, Greycoat Street,  
London SW1.

*Members £3, non-members £5*

## Don't miss

### **Butterflies in the Glasshouse,**

**16 Jan–28 Feb, Surrey**

Banish the winter blues with a visit to The Glasshouse at RHS Garden Wisley, where you will find more than 1,000 tropical butterflies flitting and floating among the foliage. See these exotic, delicate creatures up close as they settle in to the lush tropical zone, feeding on fruit and nectar-rich plants, and learn more about their fascinating lifecycles and natural habitats.

*Normal garden admission.*

*Booking not required.*

## Scotland

### Ayr, Ayrshire



## Growing for Success

A series of talks to cultivate your mind

**26 January 7.30pm**

### How to create an organic garden, by Ian Spence

John Hannah Building, Lecture Theatre, Ayr Campus, Beech Grove, Ayr KA8 0SR.

Tel: 01292 525313 to book.

Join Ian Spence for an introduction to organic gardening. Ian was Head Gardener at Barnsdale Gardens for many years and went on to write four popular gardening titles including *Your Organic Allotment*. Discover how you can make a productive, beautiful, interesting and enjoyable garden that will offer habitat to wildlife of all kinds.

Topics covered will include soil and soil improvement; green manures; fertilisers; organic pest, disease and weed control; planning your garden; and growing fruit, vegetables and herbs. Ian will also look at how this method of gardening can help provide a happy, healthy lifestyle complete with exercise for the body and engagement for the mind.

Members £4, non-members £6



Learn about organic gardening techniques

NEIL HERMOUTH

### Aberdeen, Aberdeenshire



## Growing for Success

A series of talks to cultivate your mind

**11 March 7.30pm**

### Planting for all seasons,

by Ursula Buchan

Fraser Noble

Lecture Theatre,

Fraser Noble Building,

University of Aberdeen,

Aberdeen AB24 3UE.

Tel: 0845 612 1253 to book.

Members £5, non-members £7

(includes wine, soft drinks and nibbles)



URSULA BUCHAN

### Christie's Nursery

Downfield, Main Road, Westmuir, Kirremuir, Angus.

Tel: 0845 612 1253 to book.

For enquiries, email: ianchristie@

btconnect.com

www.christiealpines.co.uk

**21 February 11.30am-4pm**

### Snowdrop day at Brechin Castle

An impressive collection of *Galanthus*, including some rare and unusual cultivars, is grown at Christie's Nursery in Westmuir, Angus. Nursery owner Ian Christie will lead a day dedicated to snowdrops, taking place at nearby Brechin Castle.

The event will begin with an illustrated presentation by Ian about recent snowdrop finds in Angus. By kind permission of Lord and Lady Dalhousie, a lunch of soup and a buffet will then be served in the castle dining room. Following lunch, the group will be taken to Auldbar, a superb site planted in Victorian times where a small stream runs through a natural dell, with vast numbers of *Galanthus nivalis* in flower.

Participants will then drive (2 miles) to Malsden to see the beautiful sight of large drifts of

*G. nivalis* growing alongside the river, as well as *G. plicatus* and hybrids between the two species. Walking boots and warm clothing are essential. Please notify of any special dietary requirements.

Members £22.50,

non-members £25 (includes lunch)

### Scone Palace

Perth, Perthshire PH2 6BD.

www.scone-palace.co.uk

**20, 21, 26, 27 and 28**

**February 11am-5pm**

### Snowdrop festival

A visit to Scone Palace would not be complete without exploring the extensive gardens and grounds. From the Murray Star Maze, planted with 2,000 copper and green beech trees to resemble tartan, to the colorful Butterfly Garden, there is something to enjoy throughout the year.

In late winter it is the carpets of snowdrops that do most to enchant visitors to Scone, and the Snowdrop Festival is one of the delights of the season. Enjoy a stroll, admiring the delicate beauty of the individual flowers but also the spectacle of the massed drifts. Most of the snowdrops are *Galanthus nivalis* (above), which thrive throughout the 40ha (100 acre) estate – from Lime Avenue to the woodland walk and wild garden.

Members free, non-members £5.10 (concessions £4.50)

## North West

### Newton Rigg Campus

University of Cumbria,  
Penrith CA11 0AH.

For full details of the college's events programme,  
tel: 0845 850 0744 or email:  
samantha.smith@cumbria.ac.uk  
www.uclan.ac.uk/cumbria

### Reaseheath College

Reaseheath, Nantwich,  
Cheshire CW5 6DF.

For full details of the college's events programme, contact  
Sue Parkinson on 01270 613211  
or email: suepa@reaseheath.ac.uk  
www.reaseheath.ac.uk

### Tatton Park Gardens

Tatton Park, Knutsford,  
Cheshire WA16 6QN.  
www.tattonpark.org.uk

**13–21 February (excl. 15 Feb)  
11am–4pm (last entry 3pm)  
Scarecrow festival**

Keep half-term boredom at bay and enjoy some family fun with a visit to the Tatton Park Scarecrow Festival. Wrap up warmly and set off in search of the weird and wonderful scarecrows placed around the 20ha (50 acre) formal gardens. As you hunt, notice the quiet beauty of the winter garden – the atmospheric mounds of



TATTON PARK

'hibernating' *Gunnera manicata* near Golden Pond, the graceful forms of the maples in the Japanese Garden, and the neat borders of the extensive Kitchen Garden, ready for spring sowing.

Visit on 20 Feb for an activity day when children can make, stuff and dress a scarecrow for the garden. They can also join in a quiz to find the missing garden tools 'stolen' by mischievous squirrels and jackdaws.

*Normal garden admission (members free, non-members £4.50). Booking not required.*

## North East

### RHS Garden Harlow Carr

RHS Crag Lane, Harrogate,  
North Yorkshire HG3 1QB.  
Tel: 01423 565418.

Email: harlowcarr@rhs.org.uk.

All events must be booked in advance (unless otherwise stated).  
Tel: 0845 612 1253 to book.

**Normal garden admission:**  
members plus one family guest  
free, non-members £7.

For Harlow Carr's full annual programme of events, contact the garden on 01423 565418  
or see: [www.rhs.org.uk/harlowcarr](http://www.rhs.org.uk/harlowcarr)

### Throughout January 10am–3pm

#### Health and well-being month

After the merriment of Christmas and New Year, plan a visit to RHS Garden Harlow Carr for some fresh air and an enjoyable stroll around the garden, which will be full of winter interest. Gather the family, put on your wellies and explore the various routes – and discover a few hidden surprises along the way.

*FREE with normal garden admission.  
Booking not required.*

### 13–21 February 10am–3pm Go Wild

A fun family event exploring the abundant wildlife at Harlow Carr. Learn how to make your own garden attractive to wildlife, with a specific focus on birds.

*FREE with normal garden admission.  
Booking not required.*

### 21 February 11am–3pm

#### Bonsai open day

Meet members of the Bonsai Group who will be available to offer information and answer questions about this ancient technique. Displays and informal demonstrations will take place throughout the day and visitors are welcome to bring along specimens for advice.

*FREE with normal garden admission.  
Booking not required.*

### 6–7 March

#### RHS Grow Your Own weekend



TON ENOCH

This special weekend will be dedicated to learning how to grow your own fruit and vegetables, no matter what sort of outside space is available to you. RHS gardening experts will be on hand to teach you all you need to know, so bring the family along and roll up your sleeves ready for some inspiration and fun.

*Booking not required.*



## East Anglia

### RHS Garden Hyde Hall

**RHS** Westerns Approach,  
Rettendon, Chelmsford,  
Essex CM3 8AT.

**Tel:** 01245 400256. All events must be booked in advance (unless otherwise stated).

**Tel:** 0845 612 1253 to book.

**Normal garden admission:** members plus one family guest free, non-members £7.

For Hyde Hall's seasonal event listing, contact the garden on 01245 400256 or see:

**www.rhs.org.uk/hydehall**

### 16–17 January 10am–3pm

#### Vintage garden tool exhibition

Recall the bygone age of gardening with this extensive exhibition of vintage and antique garden tools.

*FREE after normal garden admission. Booking not required.*

### 27 January 11am–12.30pm

#### Creative planting workshop

Learn how to create maximum visual impact by using interesting and unusual plant textures, structures, shapes and colours. The principles of good design and plant composition will be discussed to help you create an atmospheric retreat for your own garden whatever the size, style or budget.

*Members £12, non-members £19*

### 30 January 10.30am, 12.30pm and 2.30pm

#### Family scarecrow making day

Gather the family together for some good old-fashioned fun and learn how to make a scarecrow. The garden will provide you with the basic kit and you can bring along old items of clothing to dress your scarecrow – the wackier



JERRY HARPER / RHS

the clothes, the better. Your scarecrow will then be put to good use out in the fields, but be sure to come back and visit.

*£7 per scarecrow making kit plus normal garden admission, payable on the day.*

### 16 February 11am–3pm

#### Children's half-term event:

##### Chinese arts and crafts

Celebrate the Chinese New Year of the Tiger with a themed art and craft session. Enjoy making masks, fans, paper lanterns, paintings and collages. Suitable for children up to 12 years of age.

*Normal garden admission plus additional cash payment on the day of £2 per child. Booking not required.*

### 17 February 11am–3pm

#### Children's half-term event:

##### Paper and patches

A hands-on craft activity where children will learn how to make paper and patchwork squares. Suitable for children up to 12 years of age.

*Normal garden admission plus additional cash payment on the day of £2 per child. Booking not required.*

### 18 February 11am–3pm

#### Children's half-term event:

##### Jack and the beanstalk

Learn how to plant a bean seed and see if it turns into a magical

beanstalk! Once your bean is safely planted, you can sit back and listen to the famous Jack and the Beanstalk story. Suitable for children up to 12 years of age. *Normal garden admission plus additional cash payment on the day of £2 per child. Booking not required.*

### 20 February 10am–1pm

#### Farmers' market

Discover the real tastes of Essex at Hyde Hall's popular Farmers' Market. There will be a range of selected producers offering fresh, flavoursome food that has been produced locally. Be sure to arrive early and take advantage of the free entry offer between 10am and 11am.

*Normal garden admission applies after 11am. Booking not required.*

### 27 February 10.30am–4pm

#### Digital photography for

##### beginners, with Adrian Davies

A course aimed at those people who have got a digital camera and want to know how to get the very best quality from it. Adrian will look at camera settings and photography, file formats, image processing and the printing of digital images.

*Members £43, non-members £50*

### 28 February 10am–1pm

#### Making natural beauty products

Pampering yourself will feel much more indulgent if you have made your own beauty products. Using 100 percent natural ingredients, discover how to make salt scrubs, soya wax candles and lip balms. *Members £30, non-members £37*

### 6 March 10am–4pm

#### RHS Grow Your Own day

We all know that home-grown fruit and vegetables are much tastier, so if you are thinking of

having a go at growing your own, or want to improve your existing knowledge, come along and pick up some advice and inspiration from the experts. A range of topics will be covered to point you in the right direction and get you started, whether you have an allotment or window box. There will also be plenty of stalls, displays and children's activities to keep the whole family amused. *Booking not required.*

## 10 March 11am–2pm Vegetables from scratch workshop

If you are thinking of growing your own for the first time, this workshop will offer invaluable guidance and inspiration to get you started. Topics will include seed sowing, soil preparation, watering techniques, seasonal tasks and crop rotation. *Members £12, non-members £19*

## 13 March 10.30am–4pm Digital photography – next steps with Chris Hillman

A comprehensive guide to cameras, imaging software and printers so that you can get the best from your equipment. The workshop is aimed at more experienced users, and will include a practical outdoor session. *Members £43, non-members £50*

## 16 March 11am–12.30pm Spring pruning workshop

Hyde Hall's pruning techniques are much admired and this workshop will let you into a few of the gardeners' secrets. The session will explain the need for pruning and give practical demonstrations to help ensure your shrubs stay shapely and develop to their full potential for the season ahead. *Members £12, non-members £19*

## The Beth Chatto Gardens

Elmstead Market, Colchester, Essex CO7 7DB.

Tel: 01206 822 007 to book.

[www.bethchatto.co.uk](http://www.bethchatto.co.uk)

### 10–13 February 11am–2pm

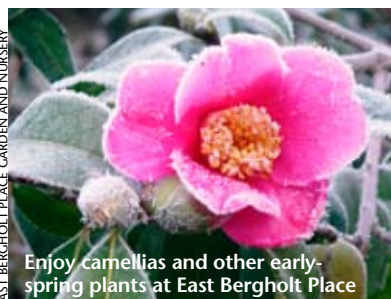
#### Early spring walks, with David Ward

By February, The Beth Chatto Gardens are brimming with the first signs of spring, as tapestries of groundcover plants and bulbs begin to emerge from the chilly earth. Join Plant Production Manager David Ward and other experienced members of the garden staff as they lead four walks looking at early spring highlights, with an emphasis on snowdrops. Starting with an introductory talk in the tea room, David will provide hints on how to identify, cultivate, use and propagate snowdrops, also taking a look at the history of snowdrop cultivation and companion plants. In the garden the woodland and shade areas will be of particular interest with their many unusual *Galanthus* cultivars, *Helleborus x hybridus* forms, *H. x nigercors* and *H. x ericsmithii*. *Members £13.95, non-members £16.95 per event*



*Galanthus 'Mrs Thompson'*

EAST BERGHOLT PLACE GARDEN AND NURSERY



Enjoy camellias and other early-spring plants at East Bergholt Place

## East Bergholt Place Garden and Nursery

The Place for Plants, East Bergholt, Suffolk CO7 6UP.

Tel: 01206 299224 to book.

### 11 February 10.30am–12.30pm

#### Snowdrop and early spring garden walk, with Rupert Eley

Originally laid out at the turn of the last century, East Bergholt Place Garden covers 8ha (20 acres) in the picturesque Stour Valley. The garden is not normally open to visitors until March, but RHS members and their friends can enjoy a special preview in the company of owner Rupert Eley. Rupert will lead a guided tour, pointing out the many plants of interest and providing ideas on creating a memorable winter garden. See how bulbs such as snowdrops, scattered in small groups beneath unusual trees and shrubs, are used to create early spring interest, and the topiary that ensures strong year-round structure. This is also a good chance to enjoy the garden's collections of magnolias and camellias, which often invite comparisons with Cornish gardens – the Camellia Walk, laid out along the Victorian garden wall, provides showy displays from Christmas until June. *Members £7.95, non-members £9.95*

DAVID WARD - THE BETH CHATTO GARDENS

## Easton Walled Gardens

Easton, Grantham,  
Lincolnshire NG33 5AP.  
Tel: 01476 530063 to book  
[www.eastonwalledgardens.co.uk](http://www.eastonwalledgardens.co.uk)

**24 February, 10 March,  
14 April, 12 May, 9 June,  
25 August and**

**8 September 1–4pm**

### Garden photography workshops, with Pete Murray

Gardens provide a plethora of subjects for photographers. This series of workshops – each self-contained – aims to help amateur photographers capture everyday natural beauty, drawing on the seasonal highlights around this 5ha (12 acre) restored walled garden. Pete Murray is particularly interested in plant and landscape photography and has many years' experience running photographic courses. He will help you to get to know your camera, encouraging participants to go beyond programmed auto settings and experiment in order to get the best possible results.

Please bring your digital camera (compact or SLR), detailed camera instruction manual and a tripod. Lunch can be purchased in the garden tea room (except for the February course).

*Members £28, non-members £35 per event*

## East Ruston Old Vicarage

East Ruston, Norwich NR12 9HN.  
Tel: 01692 650432 to book.  
[www.eastrustonoldvicarage.co.uk](http://www.eastrustonoldvicarage.co.uk)

**2 and 4 March 10.30am–1pm**

### Winter walk, with Alan Gray

Early March is full of promise at East Ruston Old Vicarage. This morning walk is an exclusive opportunity to see the garden before it officially opens for the season, and to enjoy the first signs of spring in the company of



EAST RUSTON OLD VICARAGE

garden co-owner Alan Gray. 'This is a time of optimism and anticipation, with carpets of snowdrops and aconites in flower, as well as plenty of early *Narcissus*. Depending on the season, we might have the pleasure of seeing some of the early magnolias in bloom,' says Alan.

Early spring is also an ideal time to appreciate the structural elements of the garden (above). 'The design and architecture can be fully appreciated when the plants have been pared back and the hedges tightly-cut.'

Guests are invited to arrive at 10.30am for coffee before the guided tour begins at 11am. Following the tour (1.5–2 hours) lunch will be served, after which guests can continue to explore the garden at their leisure.

*Members £36, non-members £40 per event (includes coffee and lunch)*

## Marks Hall Garden and Arboretum

Coggeshall, Essex CO6 1TG.  
Tel: 01376 563796 to book.  
[www.markshall.org.uk](http://www.markshall.org.uk)

**11 February 11am–2.30pm**

### Marks Hall and other great gardens with Jerry Harpur

Jerry Harpur photographs gardens and plants all over the world. He has contributed pictures to more than 300 books and won awards on both sides of the Atlantic,

including the Garden Writers' Guild Lifetime Achievement Award in 2001. Spring will see the publication of his latest book, *Dream Gardens of England*, photographed in collaboration with his son Marcus and with the words of Barbara Baker.

Hear Jerry talk about some of the best gardens he has seen and photographed over the past 30 years, including Marks Hall Garden and Arboretum in Essex (below). Jerry describes this as 'one of the most beautifully designed gardens in England'. He will also discuss some of his favourite international gardens, including the Rashtrapati Bhavan garden in New Delhi, designed by Sir Edwin Lutyens, and work by contemporary landscape architects.

He will look at how to take the best possible garden photographs, and also compare the results of film and digital photography.

*Members £28, non-members £35 (includes two-course lunch)*



JERRY HARPUR

## Writtle College

Chelmsford, Essex CM1 3RR.  
For full details of the college's events programme,  
tel: 01245 424200 ext. 25665  
or email: [info@writtle.ac.uk](mailto:info@writtle.ac.uk)  
[www.writtle.ac.uk](http://www.writtle.ac.uk)



## South East

### London



#### 16 February 2.15pm

##### **Making the modern garden, by Andy Sturgeon**

Lecture Theatre, RHS Lawrence Hall, Greycoat Street, Westminster, London SW1.

Tel: 0845 612 1253 to book.

Take a whirlwind illustrated tour of the history of garden design, from the ancient Greeks to the 21st century. This will be followed by a close look at what makes a modern garden, and how we can weave traditional ideas on planting and layout into the gardens of today. The talk concludes with images and anecdotes from Andy's own work, including gardens designed for the Chelsea Flower Show.

Members £4, non-members £5.

See p3 for details of the RHS Plant and Design Show on this day.

### RHS Garden Wisley

RHS Woking, Surrey GU23 6QB.

Tel: 0845 260 9000.

Email: [info@rhs.org.uk](mailto:info@rhs.org.uk)

All events must be booked in advance (unless otherwise stated).

Tel: 0845 612 1253 to book.

#### **Normal garden admission:**

members plus one family guest free, non-members £9.

For Wisley's full annual programme of events, contact the garden on 0845 260 9000 or see: [www.rhs.org.uk/wisley](http://www.rhs.org.uk/wisley)

#### **Until 3 January 4-6pm**

##### **Lumière, a Celebration of Light**

Wrap up warm and make a visit to Wisley to see the new interactive

light display. Key features in the garden will be lit up by fantastic light displays that are triggered by people walking by.

*FREE with normal garden admission.*

*Booking not required.*

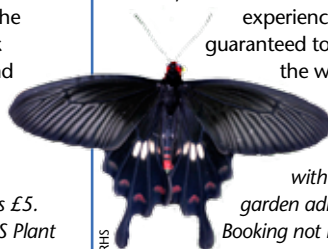
#### **16 January–28 February**

##### **10am–3.45pm**

##### **(last entry 3.30pm)**

##### **Butterflies in The Glasshouse**

More than 1,000 tropical butterflies will be released into The Glasshouse, giving visitors the chance to get up close to these exotic, delicate and varied creatures. See newly-hatched butterflies floating among the tropical plants and feeding on nectar-rich plants. Whatever the weather, this is a colourful experience guaranteed to banish the winter blues.



RHS

*FREE with normal garden admission. Booking not required.*

#### **16–17 January, 13–14**

#### **February and 20–21 February**

##### **10am–3.30pm**

##### **Children's butterfly activity weekends**

Younger visitors will enjoy these craft activities inspired by the Butterflies in the Glasshouse attraction. After looking at the amazing real butterflies in the glasshouse, have a go at some butterfly-themed arts and crafts.

*FREE with normal garden admission.*

*Booking not required.*

#### **15–19 February 10.30am–4pm**

##### **Wildlife at Wisley**

During half-term, learn how to make your garden wildlife friendly, with sowing and planting

activities and by creating homes for bugs, birds and bats.

*FREE with normal garden admission.*

*Booking not required.*

#### **13 February**

##### **Valentine's dinner**

Treat your loved one to a romantic evening with a delicious dinner in the Conservatory Dining Room at Wisley. Enjoy a reception drink on arrival, three-course meal, and a small gift to take home.

*£39.50 per person. Book in advance on 01483 225949.*

#### **6–7 March**

##### **RHS Grow Your Own weekend**

This popular annual event returns with displays and advice on how to grow your own produce. Get expert advice on how to start growing fruit and vegetables, information on cultivars to grow, and new tips and techniques for the more experienced vegetable growers. Wisley gardeners will be on hand throughout the weekend to help you with all your queries. *Booking not required.*

#### **13 and 14 March**

##### **Mothering Sunday weekend**

Treat mum to a special Mothering Sunday lunch in the Conservatory Dining Room, followed by a stroll through the garden enjoying the early spring colours and scents. Little ones can make a gift for mum, or visit the Shop and Plant Centre for a range of gift ideas.

See [www.rhs.org.uk/wisley](http://www.rhs.org.uk/wisley) for more details nearer the time

#### **13 March–11 April**

##### **Orchids in The Glasshouse**

See glorious displays of tropical orchids in the exotic surrounds of The Glasshouse.

*FREE with normal garden admission. Booking not required.*

## Benington Lordship

Stevenage, Hertfordshire SG2 7BS.

Tel: 0845 612 1253 to book.

[www.beningtonlordship.co.uk](http://www.beningtonlordship.co.uk)

**23 February 10am–2pm**

**Snowdrop day,  
with Richard Webb**



*Galanthus plicatus*  
'Diggory'

BENINGTON LORDSHIP

In February and March, a wonderful sight unfolds at Benington Lordship Gardens as vast drifts of naturalised snowdrops come into bloom, covering most of the moat and grounds surrounding the ruins of a Norman castle. Enjoy the spectacle, and find out more about growing snowdrops, as Head Gardener Richard Webb leads a memorable guided tour. Two species make up the display around the moat: single *Galanthus nivalis* and double *G. nivalis* f. *pleniflorus* 'Flore Pleno', with many more cultivars scattered around the garden. Among the collection are distinctive forms such as *G.* 'Mighty Atom', which has flowers up to 5cm (2in) across, dainty *G. gracilis* 'Highdown' with its small, finely marked flowers, and an unusual yellow form of *G. nivalis*. Richard will discuss the development and maintenance of the ever-expanding collection, and provide propagation and cultivation tips for growing snowdrops successfully at home. *Members £12.95, non-members £15.95 (includes refreshments and light lunch)*

## Capel Manor College

Bullsmoor Lane, Enfield,

Middlesex EN1 4RQ.

For full details of the college's events programme, contact Sue Rudland on 08456 122122. [www.capel.ac.uk](http://www.capel.ac.uk)

## Foxgrove Plants

Enborne, Newbury,  
Berkshire RG14 6RE.

Tel: 0845 612 1253 to book.

[www.foxgroveplants.co.uk](http://www.foxgroveplants.co.uk)

**8 February 2–4pm**

**February flowers – the  
snowdrop, with Louise Peters**

Perhaps it is because they produce their flowers at a time when little else is in flower, or because their nodding, elegant blooms mean spring is on the way. Whatever the reason, snowdrops enjoy a large and dedicated following among British gardeners.


Galanthophiles can indulge their enthusiasm with this informal talk and guided tour at Foxgrove Plants in Berkshire, which grows more than 60 different *Galanthus* species and cultivars, including some exciting rarities. Owners Robert and Louise Peters will provide an introduction to the much-loved genus, discussing suitable places to grow snowdrops, identification and propagation by twin-scaling.

Participants will have a chance to see a range of snowdrop cultivars growing in the private garden and in containers, enabling close-up appreciation of the dainty blooms. Those who wish to are welcome to bring along snowdrop plants for identification, and there will be plenty of opportunities to ask questions throughout.

*Members £7.95,  
non-members £9.95  
(includes refreshments)*

## South West

### RHS Garden Rosemoor

 Great Torrington,  
Devon EX38 8PH.

Tel: 01805 624067.

**Email:** [rosemooradmin@rhs.org.uk](mailto:rosemooradmin@rhs.org.uk).

All events must be booked in advance (unless otherwise stated).

**Tel:** 0845 612 1253 to book.

**Normal garden admission:**

members plus one family guest free, non-members £7.

For Rosemoor's full annual programme of events, contact the garden on 01805 626800 or see: [www.rhs.org.uk/rosemoor](http://www.rhs.org.uk/rosemoor)

**Until 28 February 10am–5pm**

**Winter sculpture exhibition**

Rosemoor's first winter sculpture exhibition offers an exciting mix of interesting exhibits from West Country sculptors, spread throughout the garden. Pick up a free catalogue from the front entrance and see how many you can discover. Many pieces exhibited are for sale.

*FREE with normal garden admission.  
Booking not required.*

**14 January 10am–4pm**

**Willow weaving workshop, with  
Peter Earl and Lyn Edwards**

Join Peter and Lyn for this popular workshop and learn some basic and useful willow weaving skills. All materials are included but please note that your finished work will be approximately 2m (6ft) high.

*Members £45, non-members £54*

**20 January 11am–1pm**

**Vegetable garden basics 1:  
site, soil and weather,  
with Garry Preston**

There are few greater delights than fresh, nutritious vegetables picked straight from your own

garden. The good news is that vegetables are easy to grow – anyone can do it, but to produce high quality vegetables consistently year after year is more difficult. Understanding the basics is important whether you are a complete beginner or a more experienced grower. This talk, the first in a series of three, will look at a number of topics, including choice of site and the effect of altitude, exposure and rainfall on plant growth and seed germination. Garry will also look at how different soil types and cultivation methods affect soil structure and fertility. Talks 2 and 3 are held on 27 January and 3 February respectively.

*Members £8, non-members £14*

### **21 and 27 January 11am–1pm** **Rose pruning demonstration,** **with Philip Scott**

*Members £8, non-members £14 per event*

### **21 January 11am–1pm**

#### **Snowdrop day,** **with Matt Bishop**

Matt Bishop is Curator of the Garden House at Yelverton, and one of Britain's leading 'galanthophiles'. Join Matt for a fascinating talk about these early heralds of spring, in all their rare and unusual forms. Following the talk, take a stroll around the garden to appreciate Rosemoor's glorious drifts of snowdrops.

*Members £8, non-members £14*

### **27 January 11am–1pm**

#### **Vegetable garden basics 2:** **compost, crop rotation and** **pests & diseases,** **with Garry Preston**

Talk two in the series explores the importance of making your own compost, crop rotation and the

principles of pest and disease management.

Talk 3 follows on 3 February.

*Members £8, non-members £14*



Get vegetable growing guidance at Rosemoor

RHS

### **29 January 11am–1pm**

#### **Hedges: laying and** **management, with Tom Hynes**

Join local Coast & Countryside Service expert, Tom Hynes, for a demonstration covering the craft of hedge laying. Tom will discuss the development and management of Rosemoor's hedges and provide some useful tips for successful hedge management in your garden.

*Members £8, non-members £14*

### **31 January 10am–5pm**

#### **Orchid day**

Today will teach you everything you need to know about growing orchids, with presentations, talks and advice, as well as a chance to purchase quality plants.

*Plant Centre and Shop event.*

*Booking not required.*

### **3 February 11am–1pm**

#### **Vegetable garden basics 3:** **sowing, germination and seed** **bed preparation,** **with Garry Preston**

*Members £8, non-members £14*

### **10 and 16 February**

#### **11am–1pm**

#### **Apple pruning demonstration,** **with Peter Earl**

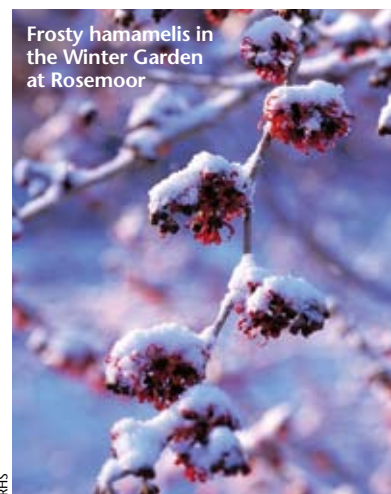
*Members £8, non-members £14 per event*

### **11 February 11am–1pm**

#### **Colour and fragrance in the** **Winter Garden,** **with James Shepherd**

If your garden doesn't come alive until spring, join this winter garden walk and take away some practical but imaginative ideas to brighten up your own winter landscape. Planted in 1996 and constantly developing with a range of new plantings each year, there will be plenty to enjoy and discuss. Practical elements of plant care will be covered, and a comprehensive plant list will be handed out for you to take home.

*Members £8, non-members £14*



Frosty hamamelis in the Winter Garden at Rosemoor

RHS

### **13 February 11am–1pm**

#### **Nature's way – Naturalistic** **perennial planting from border** **to meadow: talk with Curator** **Christopher Bailes**

*Members £8, non-members £14*

**17 February 10am, 11.30am, 1.30pm and 3pm**

**Children's holiday workshop: Ravenous Rooks, with Karen Hawkins**

Make hand puppets that squawk and caw like the rooks high in the trees. Fitting over your hand and arm, these crazy birds are made from everyday materials with a twist. Suitable for children 8–12 years. Under 8's welcome but must be accompanied by an adult. Please wear old clothes. *£6 per session, Garden Explorer members free*

**20 February 10am–5pm**

**Hellebore day**

Celebrate the hellebore, one of the heralds of spring. Come along to the Plant Centre for advice on these eye catching plants, with talks by Hugh Nunn of the Harvington Hellebore Collection. *Plant Centre and Shop event. Booking not required.*

**23 February 11am–1pm**

**The glory of the Winter Garden, with Christopher Bailes**

*Members £8, non-members £14*

**24 February and 2 March 11am–1pm**

**Shrub pruning demonstration, with Jon Webster**

*Members £8, non-members £14 per event*

**6 March 10am–5pm**

**RHS Grow Your Own Day**

Learn how to grow fruit and sow vegetables at this free open day. Anyone can have a go at growing fruit and veg, no matter what your level of expertise or how much space you have – fruit and vegetables can be cultivated in containers, growing bags and even hanging baskets. It is

rewarding and healthy so why not give it a try and see what you can achieve. There will be talks, walks and advice as well as trails to follow. *Booking not required.*

**11–12 March**

**10.30am–4.30pm**

**Making your watercolours more free: two-day workshop, with John Hoar**

*Members £110, non-members £132*

**13 March 10am–5pm**

**Alpine day**

Alpines are cultivated varieties of wild flowers, originally from the high mountainous regions of the world. Although most of them are relatively small, some are considered among the most beautiful plants in the world. Come along today and learn more about these versatile plants. *Plant Centre and Shop event. Booking not required.*

**13 March 11am–1pm**

**Alpines in pots: an introduction to Rosemoor's alpines, with Catherine Norman**

Join Catherine for a two-part tour of Rosemoor's alpine collection. The workshop begins with a walk to look at how the garden displays its alpines, followed by a practical demonstration on how the plants in the collection are propagated, grown and cared for.

*Members £8, non-members £14*

## Burnham Nurseries

Forches Cross, Newton Abbot, Devon TQ12 6PZ.

Tel: 01626 352233 to book.

[www.orchids.uk.com](http://www.orchids.uk.com)

**7 March and 12 September 10am–3pm**

**Beginners' orchid masterclass, with Sara Rittershausen**

Growing orchids is a rewarding



BURNHAM NURSERIES

Learn about *Cymbidium* and other orchids at Burnham Nurseries

pastime, offering elegant blooms that last and last. Those new to this large and striking group of plants will value this informative workshop at award-winning Burnham Nurseries, which has specialised in orchids since 1950. 'Participants will gain a good basic knowledge of how orchids grow, enabling them to start this fascinating hobby with confidence,' says Director Sara Rittershausen.

The day will include an introduction to orchids, a hands-on re-potting and dividing session, and advice on basic watering and feeding. Sara will explore how to care for a range of beginners orchids including *Phalaenopsis*, which give superb results for little attention, and *Cymbidium*, which are commonly grown but often misunderstood. There will be an opportunity to see the nursery's breeding and seedling areas, which are not normally open to the public, and Orchid Paradise, an ever-changing display area featuring the nursery's private collection of orchids built up over 50 years. *Members £39, non-members £49 per event (includes light lunch and refreshments)*



## Caerhays Estate

Gorran, St Austell, Cornwall  
PL26 6LY.

Tel: 01872 501310 to book.  
[www.caerhays.co.uk](http://www.caerhays.co.uk)

**5, 12 and 19 March (9.30am  
5 & 12 Mar, 11am 19 Mar)**

### Plant collections at Caerhays

Caerhays Estate has organised a special lecture programme for 2010, exploring the significance of the estate's historic plant collections. Caerhays has a proud history of new plant introductions and is home to many trees grown from seed collected in the wild by Wilson and Forrest. A particular highlight of the series will be a lecture given on 19 March (11am) by Chief Curator of the RHS, Jim Gardiner, exploring some of Caerhays' notable magnolia introductions.

Magnolias are also the theme on 12 March (9.30am) with a discussion of Caerhays' National Plant Collection of Magnolias. The ever-expanding collection comprises nearly 60 species of *Magnolia*, *Manglietia* and *Michelia*, together with some 350 named hybrids. On 5 March (9.30am) the focus will be on Caerhays' collection of 50 evergreen *Quercus* and *Lithocarpus*, and its many



*Magnolia*  
'Caerhays  
Surprise'

CAERHAYS ESTATE

interesting Champion trees.

Each lecture includes a large range of cut plant material on display, practical demonstrations and a garden tour (lasting approximately 1.5 hours). Participants are welcome to continue exploring the gardens at their leisure after lunch.

The series continues with further lectures in April, May and June. Details will be in the March issue of *Events*, or visit [www.rhs.org.uk/whatson](http://www.rhs.org.uk/whatson) for further details.  
*5 & 12 Mar: members £30, non-members £37 per event (includes buffet lunch with wine); 19 Mar: members £45, non-members £55 (includes buffet lunch with wine)*

## Compton Acres

164 Canford Cliffs Road, Poole,  
Dorset BH13 7ES.

[www.comptonacres.co.uk](http://www.comptonacres.co.uk)

**11-29 March**

**10.30am-4.30pm**

### Society of Floral Painters art exhibition

The Italian Villa provides the perfect Mediterranean finishing touch to the Italian Garden at Compton Acres, with its ornamental pool, elegant balustrades and formal bedding displays. In March the villa will be the venue for a vibrant exhibition staged by the acclaimed Society of Floral Painters. The walls will be hung with botanically-inspired art in a variety of styles and media from illustration to free design, with works varying in size from miniatures to large canvases.

A range of other floral items such as cards, silk scarves, hand-painted pottery and books will also be available for purchase during the exhibition.

*Free entry to exhibition.*

*Garden entry: members free, non-members £6.95*

## Holbrook Garden

Sampford Peverell, Tiverton,  
Devon EX16 7EN.

Tel: 01884 821164 to book.  
[www.holbrookgarden.com](http://www.holbrookgarden.com)

**12 March 2-5pm**

**Plant propagation that works –  
how to grow your own garden,  
with Martin Hughes-Jones  
and Sue Proud**



MARTIN HUGHES-JONES

Propagation know-how can enable you to populate your garden for less cost, and to grow plants not easily found in nurseries and garden centres – not to mention the satisfaction of watching home-propagated plants thrive. Let Martin Hughes-Jones and Sue Proud, owners of Holbrook Gardens and the adjoining Sampford Shrubs nursery, show you how to become a successful propagator.

Martin and Sue grow a wide range of hardy plants at their specialist retail nursery in Devon, propagating almost all of them onsite in a series of polytunnels. 'Learn how to propagate plants with a no-nonsense, completely practical approach that will throw away the myths and dispense with the magic,' says Martin.

The workshop will be hands-on – participants will sow seed, divide plants and take cuttings with help and guidance from Martin and



Sue. Compost, plant pots, cuttings and knives will be provided but please bring secateurs and the seeds of any favourite plants (especially herbaceous) that you would like to grow. It is recommended that, if possible, participants purchase a small electrically-heated propagator (approx £15–30) prior to attending the workshop. *Members £20, non-members £24 (includes refreshments)*

## Kingston Maurward College

Dorchester, Dorset DT2 8PY.  
For full details of the college's events programme,  
tel: 01305 215022.  
[www.kmc.ac.uk](http://www.kmc.ac.uk)

## Pennard Plants

The Walled Gardens, East Pennard, Somerset BA4 6TU.  
Tel: 0845 612 1253 to book.  
[www.pennardplants.com](http://www.pennardplants.com)  
**16 January, 28 Jan, 10 Feb and 24 Feb 10.30am–3pm**  
**Grow your own food, with Chris Smith**



NEIL HEWORTH

Pennard Plants is a small specialist nursery set in a Victorian walled garden in Somerset. The business is best known for South African plants such as agapanthus, gladioli and nerines, but in recent years owners Chris Smith and Mike Milligan have become increasingly interested in plants for the kitchen garden. As well as a range of heritage vegetable

seeds (no hybrids), the nursery offers heritage vegetable plants, seed potatoes, soft fruit plants, heritage apples and pear trees.

This winter Chris will share his expertise during a series of Grow Your Own Food workshops – ideal for those wanting to produce their own tasty, just-picked produce in 2010 and beyond. Held in the new vegetable display garden, where many of the nursery's vegetable seeds are trialled, this will be a comprehensive vegetable growing course to help you achieve a year-round supply of fruit and vegetables.

'The course is based around practical tips to get the best from a kitchen garden, no matter how large or small,' says Chris.

*Members £21.95, non-members £26.95 per event (includes light lunch and refreshments)*

## Central

### Ashwood Nurseries Ltd

Ashwood Lower Lane, Ashwood, Kingswinford DY6 0AE.  
Tel: 01384 401996 to book.  
[www.ashwoodnurseries.com](http://www.ashwoodnurseries.com)

**19 January and 9 February 12–3.30pm**

**Winter in bloom, with John Massey**

No garden should be dull in winter – so says John Massey, Owner and Managing Director of Ashwood Nurseries. Find out how you can have a colourful and interesting display even in the coldest, darkest months with this illustrated talk and guided tour of John's renowned garden.

'We will be looking at a wide range of plants that can be used to create colour, form, texture and fragrance in the winter garden,' says John.



ASHWOOD NURSERIES

The nursery is well known for its hellebore selections and this will be an opportunity to see inside the hellebore breeding glasshouse, not normally open to the public, and view some of the latest Ashwood Garden Hybrids. John will also highlight a range of worthy *Hamamelis* cultivars (above), winter-flowering cyclamen species and *Galanthus* cultivars, discussing plant associations and cultivation requirements.  
*Members £12.95, non-members £15.95 per event*

### Brooksby Melton College

Brooksby Campus, Melton Mowbray, Leicestershire LE14 2LJ.  
For full details of the college's events programme,  
tel: 01664 850850.  
[www.brooksbymelton.ac.uk](http://www.brooksbymelton.ac.uk)

### RHS Centre at Pershore College

RHS Regional Centre, Avonbank, Pershore, Worcestershire WR10 3JP.  
For full details of the college's events programme contact Jill Pearson, tel: 01386 554609 or email: [rhs@warkscol.ac.uk](mailto:rhs@warkscol.ac.uk)  
[www.warkscol.ac.uk](http://www.warkscol.ac.uk)

## Wales

## Aberglasney Gardens

Llangathen, Carmarthenshire  
SA32 8QH.

Tel: 01558 668998 to book  
[www.aberglasney.org](http://www.aberglasney.org)

**28 February 1–3.30pm****The delights of a February garden, with Graham Rankin**

The winter garden may not be able to match the riotous colour and abundance of the summer garden, but look closely and there are still many charms to enjoy. On a stroll around Aberglasney Gardens on New Year's Day 2008, Director of Operations Graham Rankin counted more than 40 different plants in flower – showing that there are still plenty of reasons to visit in winter.

'People seem to think that there is little to see during winter. But there is still quite a lot of interest – you just need to be a little more observant to appreciate it,' says Graham. Join Graham for a guided walk exploring just how colourful and fragrant the winter garden can be. Highlights include a collection of 12 *Hamamelis* cultivars, with their spidery, intensely scented flowers; glowing drifts of diminutive *Narcissus* 'Cedric Morris'; and more than 20 specimens of *Daphne bholua*, which fill the air with their exotic perfume. Other treats include camellias braving the chill with

showy blooms, winter-flowering honeysuckles and an array of *Sarcococca* species.

*Members* £9.95, *non-members* £11.95 (includes refreshments)

## Farmyard Nurseries

Dol-Ilan Road, Llandysul,  
Carmarthenshire SA44 4RL.

Tel: 01559 363389 to book.

[www.farmyardnurseries.co.uk](http://www.farmyardnurseries.co.uk)

**24 January 10.30am–12.30pm****Heavenly hellebores,****with Richard****Bramley**

With their exquisitely formed flowers and almost infinite colour range,

it isn't difficult to see why hellebores are such sought-after garden plants. Farmyard Nurseries offers an extensive range of *Helleborus orientalis* hybrids, selected not just for large, outward facing flowers and attractive colour but also for vigour and disease resistance.

In January, Owner Richard Bramley will share his expertise with an event exploring how to grow hellebores successfully. Following an informative talk Richard will give a guided tour of the hellebore stock tunnels – where you can see how hellebores are bred, and see exciting new lines not yet on sale – and the nursery garden, where large plantings of hellebores can be enjoyed in a tranquil 0.4ha (1 acre) woodland setting. Richard will also demonstrate pollination and propagation by division and provide tips on successful associated plantings.

*Members* £7.95,  
*non-members* £9.95



FARMYARD  
NURSERIES

Bridgend College –  
Pencoed Campus

Pencoed, Bridgend,  
Mid Glamorgan CF35 5LG.

For full details of the college's events programme,  
tel: 01656 302600.  
[www.bridgend.ac.uk](http://www.bridgend.ac.uk)

## Channel Islands

## Mille Fleurs

Rue du Bordage,  
St. Pierre du Bois,  
Guernsey GY7 9DW  
Tel: 01481 263911 to book.

**23 January 10am–12pm****Winter pruning of fruit trees, ornamental shrubs and****climbers, with John Woodward**

Mille Fleurs – meaning a thousand flowers – is a 1ha (2.5 acre) natural country garden in St Pierre du Bois providing colour and interest from January until late autumn. The mature garden is home to a broad collection of rare and semi-tropical plants that thrive in the mild climate, from spring flowers and Guernsey lilies to hydrangeas, *Ginkgo* and towering echiums.

In late January the garden will provide the setting for a practical morning session on winter pruning, with local horticultural expert John Woodward. John will explain why, what, and how to prune in winter via a practical demonstration and hands-on workshop. The session will show you how to successfully prune fruit trees including apples, pears and figs, summer-flowering ornamental shrubs, and climbers such as roses and clematis.

A further course will be held in July on summer pruning.  
*Members* £10,  
*non-members* £12.50 (includes refreshments)



ABERGASNEY GARDENS

*Camellia x vernalis*  
'Yuletide'

# Wrap up warm and venture out this winter



Introduce a friend to **RHS Membership** and share the great outdoors

FREE  
**£5**  
RHS shop  
voucher



Recommend someone to RHS Membership and when they join, we'll treat you both to an £5 RHS shop voucher.

To introduce a new member today,  
call: **0845 130 4646** quoting **3032**.



Terms & conditions: Individual membership (£49) and the NEW Joint Membership (£70) both include a one-off £5 enrolment fee. Members cannot introduce persons to membership who are already members of the RHS or who have been members within the last six months. This offer cannot be used in conjunction with any other offer or membership transaction and is valid until 31/10/2010. New members should allow 28 days to receive their membership card and handbook. Full details of membership benefits are listed online, [www.rhs.org.uk/join](http://www.rhs.org.uk/join) Registered Charity Number: 222879/SC038262

The RHS, the UK's leading gardening charity