

WHAT'S ON AT ROSEMOOR 2014

A year of exciting events and glorious garden highlights from Devon's favourite day out

KEY:

MAIN MARQUEE EVENTS

Garden Events

Family Fun

Food & Drink

Arts & Crafts

Music & Theatre

OTHER EVENTS

Members' Evenings

Plant Talk or Shopping Events

JANUARY

The Winter and Foliage Gardens will be enchanting with an amazing and surprising mix of colour, fragrance, texture and structure.

Don't miss plants like *Daphne*, *Mahonia*, *Sarcococca* (Christmas box), *Hamamelis* (Witch Hazel), *Cornus* (dogwoods), willow stems, a National Holly Collection and ornamental grasses.



Throughout January

Winter Sculpture Exhibition

Set amongst the dramatic backdrop of the garden in winter.

11 January

Orchid Re-potting and Sales.

12 January

Orchid Day with Devon Orchid Society.

18 – 19 January

Floristry and Antiquity in the Home.

25 – 26 January

Big Garden Bird Watch!

FEBRUARY

Winter and Foliage Gardens still enchanting but now with early camellias a plenty & drifts of snowdrops.



Until 23 February

Winter Sculpture Exhibition.

Set amongst the dramatic backdrop of the garden in winter.

1 – 2 February

Stems and Winter Colour.

8 – 9 February

Blossom and Winter Colour.

14 February

Memorable Valentine's Portraits.

15 February

Hellebore Day with Hugh Nunn.

15 – 23 February

February Half Term: 'Scarecrows'. Including exciting Scarecrow making Family Workshops* and a display of full size scarecrows.

MARCH

Upper Woodlands, Meadows, winter bedding displays near the Visitor Centre.

Rhododendrons and camellias, naturalised daffodils and fritillaries in the meadows and woodlands full of wood anemone.

1 March – 23 April

Exhibition of paintings and drawings of rare plants from the Avon Gorge.

7 March

FREE DAY Friday – Open Day. RHS 210th Birthday.

8 – 9 March

Antiques and Collectables Fair.

15 – 16 March

Spring Flower Show

Featuring competitions and displays of early camellias, magnolias, rhododendrons and new for 2014 daffodils and ornamental plants.



22 – 23 March

Alpine Weekend.

29 – 30 March

Mother's Day Family Portraits.

APRIL

Upper Woodlands & winter bedding displays near the Visitor Centre.

Camellias, early rhododendrons and magnolias, naturalised daffodils in the meadows, and woodlands full of wood anemone.

5 April

Eco Fair.

5 – 21 April

Easter Holidays: Gold Bunny Hunt sponsored by Lindt and fun family activities.



12 – 13 April

Spring Gardening Weekend.

14 – 20 April

National Gardening Week.

24 April – 15 June

Exhibition of paintings and drawings of rare plants from the South West.

26 – 27 April

RHS National Rhododendron Competition.

Come and marvel at the remarkable variety and colour of these beautiful, spring flowering plants. This National Show has over 60 classes covering all types of rhododendrons; trade and advice stands plus magnificent displays of magnolias and camellias.

MAY

Blossom in Fruit and Vegetable Garden, Potager and Wild Flower Meadows, Streamside and Rock Gully.

3 – 5 May

Spring Craft and Design Fair.

8 May

Tolkien Society Talk.

10 – 11 May

Devon Chilli Fiesta. Devon's 1st Chilli Fiesta with stalls featuring all things chilli, cookery demonstrations, samba music and dancing.

17 – 18 May

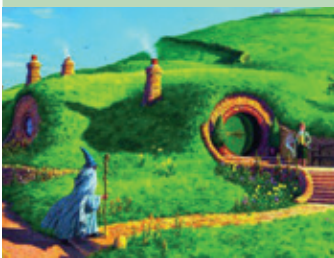
Plant Heritage Spring Plant Fair.

22 – 23 May

Special Members' Preview Evenings 'Journeys into Middle-Earth' Exhibition.

24 May – 25 August

'Journeys into Middle-Earth' Exhibition of illustrations from J.R.R. Tolkien's iconic books including a collection of Tolkien memorabilia, themed family activities, garden sculptures and a 'Middle-Earth' dwelling.



24 – 25 May

'Journeys into Middle-Earth' Exhibition launch weekend.

24 – 25 May

Cacti and Succulent Show.

24 May – 1 June

May Half Term: 'Let's Go Native – Plants and Wildlife'.

24 May – 1 June

Pollinators Week.

25 May

Pollinators Week: Auricula Day.

30 – 31 May

Pollinators Week: A Celebration of Bees.

30 May

Artist to be confirmed – check website for details. A Plough Arts Centre event**

31 May

Soul Singer Ruby Turner in Concert A Plough Arts Centre event**

JUNE

Rose Gardens, Fruit and Vegetable Garden, Potager, Wildflower Meadows, Streamside and Rock Gully.

Roses, various perennials, *Cornus kousa* collection flowering.

Throughout June

'Journeys into Middle-Earth' Exhibition.

1 June

May Half Term: 'Let's Go Native – Plants and Wildlife'.

1 June

Pollinators Week: Lavender Day.

6 – 8 June

Real Ale and Cider Weekend.

15 June

Fathers' Day – Challenge Dad!

21 – 22 June

Rose Weekend.

Come and explore the largest rose collection in the South West with over 2,000 plants, together with a floral themed market and specialist walks and talks.

21 June

Celebrate the summer Solstice.

28 – 29 June

Iris Weekend.

JULY

Rose Gardens, Fruit and Vegetable Garden, Potager, Hot Garden, Mediterranean Garden, Exotic Garden, Streamside, Lake and Rock Gully.

Throughout July

'Journeys into Middle-Earth' Exhibition.

4 July

Artist to be confirmed – check website for details. A Plough Arts Centre event**.

5 July

Cotton Club – 1920's Jazz Jive Music A Plough Arts Centre Event**

10 July

Members' Evening.

20 July

Book Fair.

20 – 24 July

Poetry and Book Week.

24 July

Members' Evening.

26 – 27 July

Vintage Weekend.



26 July – 31 August

Summer holidays: The Great 'Garden Adventure' sponsored by Witan Investment Trust.

A raft of amazing 'Journeys into Middle-Earth' inspired family activities throughout the school holidays

29 July

Entertainingly Different's 'The Quest'

AUGUST

Hot Garden, Fruit and Vegetable Garden, Rose Gardens, Potager, Mediterranean Garden, Exotic Garden, southern hemisphere display (Croquet Garden), Streamside, Lake and Rock Gully.



Until 25 August

'Journeys into Middle-Earth' Exhibition.

Until 31 August

Summer holidays: The Great Garden Adventure sponsored by Witan Investment Trust.

A raft of amazing 'Journeys into Middle-Earth' inspired family activities throughout the school holidays.

2 – 3 August

Hot Garden Colours.

16 August

Local Produce Show.

17 August

Gardening with Grasses.

27 August

Displays by North Devon Falconry.

29 August

Entertainingly Different's 'The Quest'.

31 August

Plant Heritage Autumn Plant Fair.

SEPTEMBER

Hot Garden, Fruit and Vegetable Garden, Potager, Mediterranean Garden, Exotic Garden, southern hemisphere display (Croquet Garden), main bedding displays including pots.

4 September

Special Members' Preview of The Artists' Garden Exhibition.

5 – 21 September

The Artists' Garden: Art Exhibition.

5 – 7 September

West Country Craft Fair

Browse and buy from more than 40 different crafts people from across the South West as they demonstrate the beauty and creativity of the products they make.

13 – 14 September

Hot Garden Colours.

14 September

Wedding Inspiration Fayre.



19 September

The Blues Band. A Plough Arts Centre event**.

21 September

West Country Food Fair.

OCTOBER

Autumn colour throughout the garden from *Acer*, *Cornus* and *Liquidambar*, fruits, berries and grasses.

5 October

Apple Day – A Taste of Autumn Sponsored by Mr. Fothergill's. A great day out for all the family with apple displays and tastings, cookery demonstrations, food stalls, planting and cultivation talks and children's activities.



11 – 12 October

Autumn Colour.

17 October

RHS Members' Plant Sale Preview Evening.

18 October

Autumn Plant Sale starts.

18 – 19 October

Antiques and Collectables Fair.

25 – 26 October

Pumpkin* and Woodcraft Weekend.

25 October – 2 November

October Half Term: 'Repulsive Plants and Frightening Food'.

NOVEMBER

Autumn colour throughout the garden with *Acer*, *Cornus* and *Liquidambar*, fruits, berries and grasses. Structure comes through clipped hedges and trained fruit.

7 November

FREE Day Friday – including Bonhams charity valuations.

8 – 9 November

Plants for Winter Interest.

15 – 30 November

'Tales from beyond a Tangled Wood' Photography Exhibition by John A. Howells.

22 – 23 November

Christmas Craft and Design Fair.

22 November – 22 February 2015

Winter Sculpture Exhibition.

DECEMBER

Winter and Foliage Garden, National Collection and structure and texture with clipped hedges, trained fruit trees and grasses.



6 – 7 December

Christmas Food and Confectionery.

6 – 7 December

Christmas Lunches.

7 December

Christmas Food Fair.

13 – 14 December

The Magic of Christmas – Music, Merriment and Mirth.

13 – 14 December

Garden Birds at Christmas with the RSPB.

13 December – 4 January 2015

Decorated Christmas Trees*. Show off your creative flair by entering our annual competition for the best dressed Christmas Tree with decorations made at home with natural materials.



13 – 14 December

Christmas Lunches.

15 – 23 December

Shopping in the Christmas Spirit.

20 – 21 December

The Magic of Christmas - Music, Merriment and Mirth.

20 – 21 December

Christmas Lunches.

26 December

End of season Gift Shop sale starts.



364 GREAT DAYS OUT

Every month is different at Rosemoor as glorious garden sights change with each season and bustling events offer something for everyone. There are garden walks and talks, specialist plant days, art and sculpture exhibitions, craft fairs, antiques fairs and fun family activities.

Please open up for a full calendar of events.



Royal Horticultural Society

Sharing the best in Gardening

RHS GARDEN ROSEMOOR DEVON

New for 2014 'Journeys into Middle-Earth' Exhibition and the first Devon Chilli Fiesta





The garden lover's great day out
rhs.org.uk/rosemoor



FOOD AND DRINK

Delicious seasonal menus, full of quality local and garden produce, prepared by the Rosemoor chef. Try traditional Devon Cream Teas presented on high tea stands in our Wisteria tea room (open April – September) or you may like to eat alfresco in the garden with one of our pre-ordered picnic lunch trugs.



FAMILY FUN

Weekends and school holidays are packed full of fun around the garden with our family trails. Get stuck into our garden-themed art activities and wildlife workshops or become a budding gardener as you sow and grow your own seeds.

2014 OPENING TIMES & PRICES

10am – 6pm (5pm October – March)
 Last entry one hour before closing. Closed Christmas Day.

Adults	£8.75 (£7.95 without Gift Aid)
Children 5 –16	£4.40 (£3.95 without Gift Aid)
Children 4 and under	FREE
Family (2 Adults and 2 Children)	£23.70 (£21.50 without Gift Aid)
Pre-booked Groups (10+ adults)	£6.90 per person
Companion of a disabled person	FREE
Green travel (bus or bike)	£2.00 off Adult admission

FREE ENTRY TO PLANT CENTRE, GIFT SHOP AND RESTAURANT

DAYS OUT FOR LESS

Enjoy family days out at RHS Garden Rosemoor, plus 150 other gardens and more with RHS membership. Join from just £40.50 with our introductory membership offer of 12 months' for the price of 9 by Direct Debit at the Garden entrance or online rhs.org.uk/join

WEDDING AND VENUE HIRE

The seasonal colours and scents at Rosemoor provide a stunning backdrop for weddings.

Professional learning centre, large marquee and lecture hall available for conferences, receptions, meetings, lectures or concerts with a seating capacity of up to 450 people.

For details on our packages call **01805 626 800**.

HOW TO FIND US

1 mile south of Great Torrington on the A3124.

Approximately 1 hour from the M5 at Tiverton (junction 27) via A361, 50 minutes from Exeter, 20 minutes from Barnstaple.

FREE PARKING

By Train: Umberleigh 9 miles, Barnstaple 11 miles & Exeter 40 miles

By Bus: No. 315 from Barnstaple, Bideford, Crediton & Exeter.



RHS Garden Rosemoor

CONTACT

RHS Garden Rosemoor,
 Great Torrington, Devon
 EX38 8PH
 Tel: 0845 265 8072




rhs.org.uk/rosemoor

Follow us on   

RHS Registered Charity No: 222879/SC038262
 Images: ©RHS (Buttercup field image ©Roy Riley. Gold bunnies © Lindt).



SHOPPING

Browse and buy from our huge range of high quality plants including many RHS Award of Garden Merit and 'Perfect for Pollinators' plants. Find a range of gifts, books, tableware and local artisan foods in the Shop.



ARTS AND CRAFTS

The garden is an inspirational location for many art and sculpture exhibitions as well as a centre for creative adult leisure learning workshops such as willow weaving and photography. Also Rosemoor holds craft or antiques fairs in every season.



GREAT DAYS OUT FOR EVERY SEASON

In early spring drifts of snowdrops light up even the duller days. Early camellias, glorious magnolias, rhododendrons and azaleas burst into flower. Later English bluebells adorn the woodland fringe and fruit tree blossom is buzzing with insects.

In summer the finest collection of roses in the South West, with over 2,000 plants, provide an astonishing fusion of beauty and perfume.

In late summer the stunning Hot Garden comes into its own with vibrant hues of purple, yellow and orange – colour that stretches into the sensational autumn splendour of *Acer*, *Liquidambar* and a National Collection of *Cornus*.

Rosemoor continues to enchant visitors when the Winter and Foliage Gardens are filled with a surprisingly intoxicating combination of colour, fragrance and texture.

