



Introduction to grants and the National Education Nature Park

19 October 2023

About the grant programme

- Funded by the Department for Education (DfE)
- DfE have selected 1205 nurseries, schools and colleges across England to receive the grant
- A full breakdown of eligibility can be found on the DfE website



About the grant

- Up to £10,000 – paid in advance
- The application form opens on 11 December 2023 and closes on 1 May 2024
- Please apply early to ensure you can spend the grant before the deadline – 23 July 2024



What you can spend the grant on



- **Up to £10,000** on biodiversity interventions

- Plants
- Ponds
- Planting material
- Water holders and irrigation

- **Up to £2,000** in total on sheds or other equipment storage, wet weather gear, tools, gloves or other gardening gear

- **Up to £2,000** on fieldwork resources

- **Up to 50 percent** of the grant amount on specialist support such as contractors or biodiversity experts.

Example eligible budget:

- **£2,500** on biodiversity items
- **£460** on a shed
- **£1,630** on tablets and camera traps
- **£3000** on concrete removal

Total: £6,090

Grey to green

The first year of the National Education Nature Park focuses on creating *new* green spaces. In later years we'll turn our attention to enhancing existing green spaces.

Why grey spaces?

- This is where the greatest nature gains are
- Every nursery, school and college has some grey space
- You can take time to study nature on our site before changing any green spaces, enabling you to *measure* your nature gains

By changing parts of our 'grey' landscape of human-made areas into natural habitat, however tiny, we are creating homes and resources for wildlife to move into and thrive.

Natural habitats boost wellbeing, calmness and coolness on a site, and can improve water drainage and climate resilience.

Pools of water



Start small: Add a container pond on top of existing paving/concrete

Scale up: Remove paving and create a wildlife pond

Make a bigger impact: Think about drainage and water flow across your site – could you connect ponds, rain gardens, ditches etc to reduce flooding risk and increase connectivity for nature?

Consider your water source, safety (metal grille over the top, or a fence around the pond), and access to the pond, for young people and for wildlife.

Buffets of flowers



Start small: Add windowboxes or plantpots of flowers

Scale up: Build raised beds full of flowering plants, fruits or vegetables

Make a bigger impact: Remove paving to create new, sustainable flower beds.

Consider plant choice to maximise nectar provision through the year.

Smaller pots need more watering so include water butts or automated solar watering systems – plants in the ground are much less reliant on watering than plants in pots.

Shades of trees



There are lots of options depending on your space and budget. Plant a single tree at the edge of your playground, a tree line or a mixture of species to create a mini woodland.

You can plant small trees or shrubs in large planters, or remove paving and plant in the ground.

Right tree, right place

Waves of grasses



Start small: Add large raised beds and plant with seed or plug plants to create a mini meadow.

Have a bigger impact: Remove paving, slabs or gravel and replace with grassland seed, plug plants or wildflower turf to create a species-rich grassland.

Planting in the ground requires less maintenance and has greater chance of long-term survival. Consider connectivity to other natural areas.

Cascades of green walls



Think of site boundaries and dividers as opportunities for nature. Climbing plants provide shelter, cover and food for many animals.

Start small: A plant pot or raised bed with a trellis or other support, can green a small wall or fence.

Scale up: Plant in the ground for greater long-term sustainability and lower maintenance.

Make a bigger impact: Look at your site as whole and create green corridors from your linear features.

Catching every raindrop



Put in the infrastructure that will support many future interventions for nature – water butts enable you to sustainably support many other green projects.

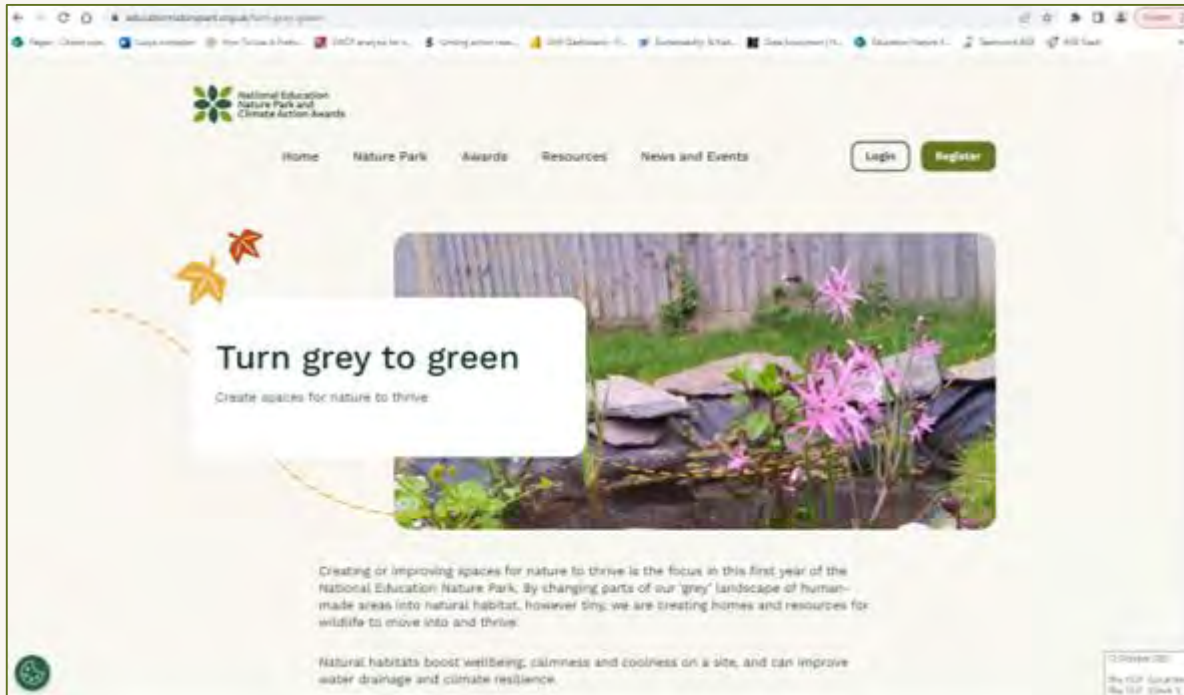
Start small: A single water butt is a great start.

Scale up: Install water butts round your whole site, providing access to rainwater wherever you need it.

Make a bigger impact: Create a rain garden, connecting a water butt or pond with pebbles and planting to slow water flow and support sustainable drainage.

Guidance online

<https://www.educationnaturepark.org.uk/turn-grey-green>



There is also lots of guidance available from organisations such as the RHS, Woodland Trust, Wildlife Trusts, Freshwater Habitats Trust, Wildfowl and Wetlands Trust and RSPB.

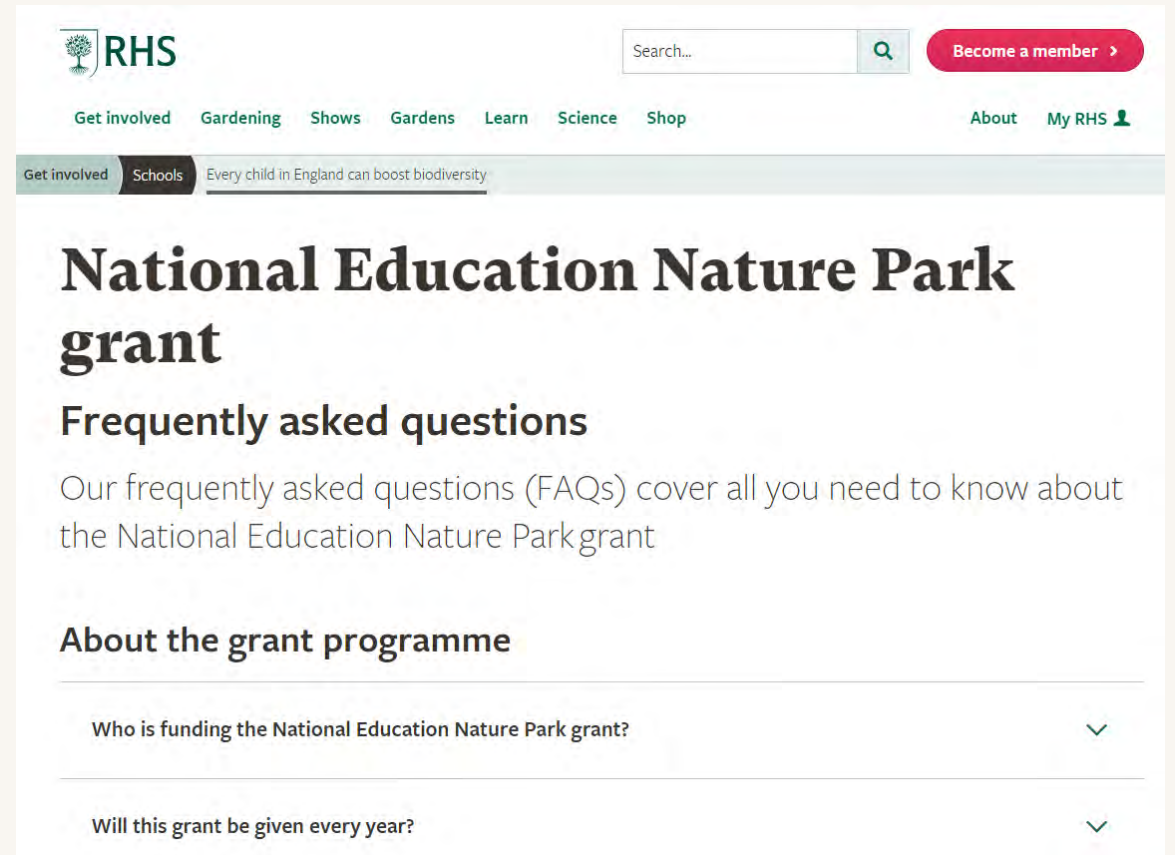
More information on removing paving:

- [Why Depave | Depave](#)
- [Grey to Green Guide_V15.indd \(london.gov.uk\)](#)
- [Brownfield Hub - Buglife](#)

Health and safety guidance will also be provided, addressing risks specific to these enhancement options.

The application process

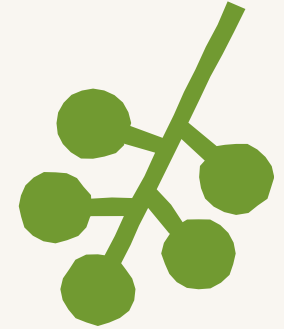
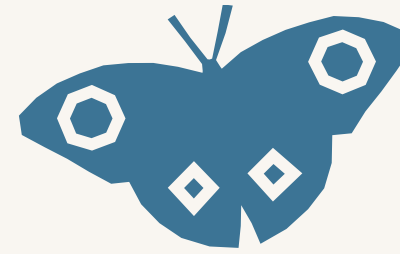
- We will email you the link to the application form itself natureparkgrants@rhs.org.uk
- Full details of what you will need to fill in the application are on the FAQ
- 13 December webinar



The screenshot shows the RHS website interface. At the top left is the RHS logo. To its right is a search bar with a magnifying glass icon and a red button labeled "Become a member". Below the logo is a navigation menu with links for "Get involved", "Gardening", "Shows", "Gardens", "Learn", "Science", and "Shop". On the right side of the menu are links for "About" and "My RHS" with a user icon. A secondary navigation bar below the main menu highlights "Get involved" and "Schools" with the tagline "Every child in England can boost biodiversity". The main content area features the heading "National Education Nature Park grant" in a large, bold font, followed by the sub-heading "Frequently asked questions". Below this is a paragraph: "Our frequently asked questions (FAQs) cover all you need to know about the National Education Nature Park grant". Underneath is the section "About the grant programme" which contains two expandable FAQ items: "Who is funding the National Education Nature Park grant?" and "Will this grant be given every year?".

Before you apply

- Agree who should apply for your school
- Register for the National Education Nature Park
- Ensure learners are involved in the deciding how to use the grant using the Getting Started and Start Planning for Nature packages on the National Education Nature Park website
- Ensure you have created your site boundary
- Ensure you have mapped the habitats on your site, or have planned to with your learners to understand the opportunities on your site
- Choose your grey to green intervention
- Put together your budget
- Let us know who your schools' lead contact is – natureparkgrants@rhs.org.uk



Useful links

- <https://www.educationnaturepark.org.uk/>
- <https://staging.rhs.org.uk/get-involved/schools/national-education-nature-park/national-education-nature-park-grant/frequently-asked-questions>
- <https://www.educationnaturepark.org.uk/finding-funding>





National Education Nature Park and Climate Action Awards

Led by



Natural
History
Museum

With



THE
ROYAL
SOCIETY

Commissioned by



Partners



Working with

