



The Boodles National Gallery Garden designed by Catherine MacDonald, Principal Landscape Designer at Landform Consultants for RHS Chelsea Flower Show 2024

Principal Landscape Designer at [Landform Consultants](#), Catherine MacDonald, is designing 'The [Boodles](#) National Gallery Garden' at RHS Chelsea Flower Show 2024, with the garden being a celebration of the gallery's Bicentenary.

This garden will be Catherine's sixth RHS Chelsea garden and marks her return to the iconic flower show after a five-year break following a run of gold medals in 2017 and 2018 for the pioneering non-alcoholic drinks brand Seedlip.

Taking inspiration from paintings at the gallery, the Boodles National Gallery Garden evokes the spirit of many significant and much-loved artworks that are on display for millions of visitors to enjoy every year. The creative vision for the design draws from artistic elements, embracing colours, textures and 'hidden details' in paintings including, most prominently, *The Water-Lily Pond* (Monet), *Lake Keitele* (Gallen-Kallela), *Portrait of Hermine Gallia* (Klimt), *The Fighting Temeraire* (Turner) plus several Seurat and Canaletto paintings.

Designer Catherine MacDonald said: "Nature has proven to be the Artist's most treasured Muse providing endless inspiration to record and cherish its intricacy and beauty for millennia. Aristotle wrote: '*Art not only imitates nature, but it also completes its deficiencies*' in other words; art can recreate the beauty of the natural world as well as offer new ways in which to experience it. We want that for visitors, to not just view the Boodles National Gallery Garden, but experience it, in a myriad of different ways, just as artists do. We invite visitors to paint with plants, experiment with texture, sculpt with the landscape, be inspired to play with light and shadow, repetition of form, and colour. Above all we want them to celebrate their love of nature by creating joy and reveling in their own space.

"I am thrilled to return as a designer after a 5-year break although I have been involved in one form or another for almost 20 consecutive years. As a former student of art, it is a passion of mine, so to be invited by Boodles to create this garden celebrating the 200th anniversary of this famous and historic gallery, feels like a pleasure and a privilege."

With a theme of 'art and nature' the planting scheme, topiary, sculptural metal arches and water features are all inspired by or represent aspects of specific paintings and art movements, including Pointillism and Impressionism. Subtle links to prominent paintings in the gallery collection will pervade the garden's design and planting, providing visitors a visual treat where nature represents art, and vice versa.

James Amos, Director, at Boodles said: "RHS Chelsea has become a firm feature in the Boodles annual events calendar and we are thrilled to be returning once again. This time we are working with the wonderful garden designer Catherine MacDonald and helping the National Gallery to celebrate their bicentenary year with a Sanctuary Garden and a very special new jewellery collection which can be seen on our tradestand."

The main focal structures in the garden comprise a series of bespoke light-weight metal sculptural arches influenced by the 'repetition & perspective' elements in Canaletto and Claude paintings and also by 'fabric & intricate details' in Klimt and Menzel paintings.

Bespoke water features are inspired by Gallen-Kallela's *Lake Keitele*, Rysselberghe's *Coastal Scene* and by 'play of light & reflections' in other paintings like Renoir's *The Skiff* and several Monets/Seurats.

The Boodles National Gallery Garden will be built by award-winning landscape contractors Gadd Brothers Trees & Landscapes, with Catherine again partnering with Will Gadd, foreman for her previous RHS Chelsea show gardens. Landform Consultants will also be building two main avenue gardens for the National Autistic Society designed by Sophie Parmenter (Sophie Parmenter Studio) and Dido Milne (CSK Architects) and for the Stroke Association designed by Miria Harris, both gardens are generously sponsored by Project Giving Back.

#### ENDS

Download link for high-res illustration, head shot of designer:

[LINK](#)

#### Media Contacts:

For designer Catherine MacDonald & Landform Consultants:  
**Jess Russell-Perry 07810 771177 / [jess@silverballpr.com](mailto:jess@silverballpr.com)**

For Boodles:

**Honour Wainwright 020 7647 1348 / [honourwainwright@boodles.com](mailto:honourwainwright@boodles.com)**

#### About Catherine MacDonald

Catherine MacDonald is Principal Landscape Designer at award-winning Landform Consultants, coordinating all new design schemes for the company. As well as creating interesting award-winning show gardens, Catherine designs beautifully balanced gardens and landscapes for residential and commercial clients. Catherine's designs include a delicate combination of strong architectural features and soft naturalistic style planting to achieve a unique design tailored to the space, architecture and client. In 2016, Catherine designed her first Show Garden at Chelsea Flower Show, as a solo designer, 'The Hartley Botanic Garden' winning Silver-Gilt. In 2017 & 2018 Catherine was awarded gold medals for both Seedlip Gardens.

#### About Landform Consultants:

Surrey based Landform Consultants is an award-winning, full service, landscaping consultancy in Chobham, working nationally and internationally. With decades of experience, Landform consistently deliver exquisite, design-led, beautifully constructed exterior spaces for clients both commercial and domestic who are looking to maximise the potential of their outside areas.

Landform have worked with many of the world's top designers to consistently deliver gold medal winning gardens. This year Landform Consultants are retained to build The National Autistic Garden

designed by Sophie Parmenter and Dido Milne and Miria Harris' garden for the Stroke Association, both gardens are sponsored by Project Giving Back.

#### **About Boodles:**

Since 1798, Boodles has represented the epitome of fine British jewellery. Still a privately-owned family business, Boodles stands for the very best in creative design; the highest quality diamonds and gemstones; and the fusion of traditional craft skills with innovation.

Every piece of Boodles jewellery is designed and hand finished in Britain. There is an emphasis at Boodles on provenance: we take pride in being able to trace our diamonds all the way back to source, and on using gold of a Single Mine Origin. At once classic and contemporary – and always distinctive – Boodles is perhaps best known for Raindance; the iconic ring which was recognised by the V&A Museum and entered into its permanent collection.

#### **About The National Gallery:**

The National Gallery is one of the greatest art galleries in the world. Founded by Parliament in 1824, the Gallery houses the nation's collection of paintings in the Western European tradition from the late 13th to the early 20th century. The collection includes works by Artemisia Gentileschi, Bellini, Cézanne, Degas, Leonardo, Monet, Raphael, Rembrandt, Renoir, Rubens, Titian, Turner, Van Dyck, Van Gogh and Velázquez. The Gallery's key objectives are to care for and enhance the collection and provide the best possible access to visitors. Admission free. More information at [nationalgallery.org.uk](http://nationalgallery.org.uk)

Full information about inspirational paintings:

*The Water-Lily Pond* (Claude Monet, 1899)

*Lake Keitele* (Akseli Gallen-Kallela, 1905)

*Portrait of Hermine Gallia* (Gustav Klimt, 1904)

*The Fighting Temeraire* (J.M.W Turner, 1839)

*Coastal Scene* (Théo van Rysselberghe, about 1892)

*The Skiff* (Pierre-August Renoir, 1875)

BOODLES  
1798



The National Gallery, London

Welcome to  
**The Boodles NG200 Garden**  
*to mark the Bicentenary of the National Gallery*

Taking inspiration from paintings at the Gallery, the garden evokes the spirit of many significant and much-loved artworks that are on display for millions of visitors to enjoy every year. The creative vision for the design draws from artistic elements, embracing colours, textures and 'hidden details' in paintings including, most prominently, 'The Water-Lily Pond' (Monet), 'Lake Keitele' (Gallen-Kallela), 'Portrait of Hermine Gallia' (Klimt), 'The Fighting Temeraire' (Turner), Seurat and Canaletto paintings. The main structures in the garden comprise a series of bespoke light-weight metal sculptural arches influenced by the 'repetition & perspective' elements in Canaletto paintings and also by 'fabric & intricate details' in Klimt and Monet paintings.

“

RHS Chelsea has become a firm feature in the Boodles annual events calendar and we are thrilled to be returning once again. This time we are working with the wonderful garden designer Catherine MacDonald and supporting the National Gallery in celebrating their bicentenary year with a Sanctuary Garden and a very special new jewellery collection which can be seen on our tradestand.

*James Amos*  
*Managing Director of Boodles*

# The Boodles NG200 Garden at RHS Chelsea Flower Show

The inspiration for the design was taken from paintings viewed during visits to the National Gallery including works by Monet, Gallen-Kallela, Klimt, Turner, Seurat and Canaletto. Features, texture and colour from specific paintings, alongside art movements, including Pointillism and Impressionism, as well as

the architecture and buildings prevalent in Canaletto's paintings, inspire the main garden features, the planting style and colour palette. Subtle links to prominent paintings at the Gallery will pervade the garden's design and planting.



*Benton Iris*



*Cenolophium denudatum*



## Catherine MacDonald

Catherine MacDonald is a British landscape designer, who leads the design studio at Landform Consultants Ltd, overseeing all design schemes for the company.

As well as creating striking, award-winning show gardens, Catherine designs balanced gardens connecting the architecture of a house to its surrounding landscape, aiming to harmonise dynamic structural features with a soft naturalistic planting style providing clients with bespoke joyful spaces, tailored to their lifestyle. Drawing on a career in science, with a PhD in genetics, her designs are sensitive to the environment, attractive to wildlife and bring a contemporary aesthetic to well-thought-out layouts.

RHS Chelsea Flower Show 2024 is Catherine's 18<sup>th</sup> year at the show in one form or another, having planted for other designers, project managed show garden

projects for Landform or been the designer herself. 'The Boodles NG200 Garden' is her 50<sup>th</sup> exhibit at an RHS Show. As a designer she's been awarded eight RHS medals, including two Golds for non-alcoholic drinks company Seedlip at RHS Chelsea, and three Golds, two Best in Categories and a People's Choice Award at RHS Hampton Court.

Catherine is an RHS Judge, has worked on numerous RHS Show Garden Selection Panels and, alongside Mark Gregory, has mentored RHS Young Designers for the last five years. Recent prominent design work includes small, intricate courtyard gardens for a city Passive House and the detail design and planting scheme for HM King Charles' Topiary Garden at Sandringham Estate.



*Geum 'Tangerine Dream'*

# The Garden

## Planting

Dominant basal green planting palette taking inspiration from Monet's *The Water-Lily Pond*, with domed/rounded plants versus softer foliage signifying pointillist and impressionist styles respectively

## Garden Arches

Inspired by repetitive structures in a Canaletto sculptural, lightweight, garden arches play with perspective. Their decorative panels pay homage to the intricate details in Klimt, and the brushstrokes in Monet and Seurat paintings

## Trees

Two *Betula pendula* trees with lighter canopies reference paintings using more delicate techniques

## Water Features

Two water features with diagonal textural changes in the water informed by Gallen-Kallela's *Lake Keitele* and three features inspired by 'play of light' in Monet's *The Museum at Le Havre*

## Paving

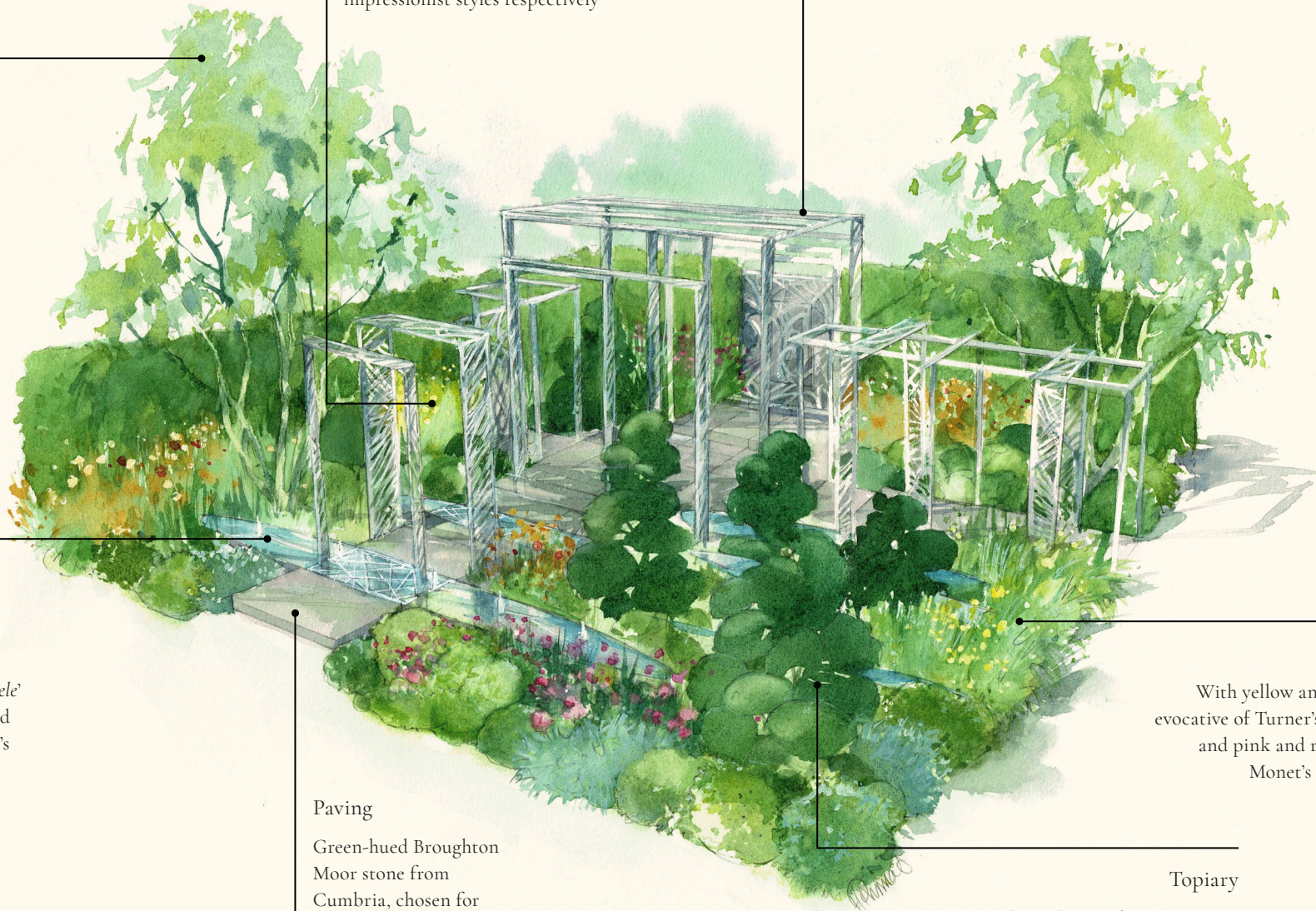
Green-hued Broughton Moor stone from Cumbria, chosen for its colour and natural patterning indicative of brushstrokes

## Jewel Flowers

With yellow and orange flower colours evocative of Turner's *The Fighting Temeraire*, and pink and red florals influenced by Monet's *Water Lilies, Setting Sun*

## Topiary

Unique sculptural *Taxus baccata* topiary specimens evoke the blocky, bold trees in paintings by Van Gogh & Cezanne



# The Boodles National Gallery Collection

Each piece in the Boodles National Gallery Collection is designed in our Head Office in Liverpool and hand-finished in workshops in London. Boodles prides itself on the traceability of its gemstones and diamonds, as well as all gold being from a Single Mine Origin (SMO).



*Play of Light*  
Multi-gem Pendant



*Play of Light*  
Multi-gem Ring



*Brushstrokes*  
Aquamarine Diamond Earrings



*Play of Light*  
Multi-gem Bracelet



*Play of Light*  
Morganite Ring



*Perspective*  
Ashoka Bangle



*Motherhood*  
Pink and White Diamond Ring



*Perspective*  
Ashoka Ring



Scan the QR code to find out more





*Play of Light*  
Multi-gem Earrings



*Brushstrokes*  
Aquamarine Diamond Bracelet



*Play of Light*  
Multi-gem Earrings



*Motherhood*  
Pink and White Diamond Pendant



*Play of Light*  
Drop Pendant



*Play of Light*  
Pink Tourmaline Earrings



*Play of Light*  
Marquise Diamond Earrings



*Brushstrokes*  
Aquamarine Ring

# Inspiration



London: Interior of the Rotunda at Ranelagh, Canaletto, 1754

Catherine Macdonald drew inspiration from the masterpieces housed within the National Gallery. Each stroke of paint and composition shaped her vision for the garden.

Monet's 'The Water-Lily Pond' served as the cornerstone of MacDonald's design ethos, infusing the garden with the verdant hues of its lush foliage. The painting's dominant, basal 'green' became the guiding principle for the garden's palette, from the paving stones to the towering trees and intricate plantings.

The structural elements of MacDonald's garden were a symphony of inspiration from various works. Canaletto's 'London: Interior of the Rotunda at Ranelagh' sparked ideas for arches and structures, playing with perspective to create a sense of grandeur. Meanwhile, the delicate detailing in Klimt's 'Portrait of Hermine Gallia' and the evocative brushstrokes of Seurat and Monet paintings found their way into the intricate patterns of the garden's arches and paving.



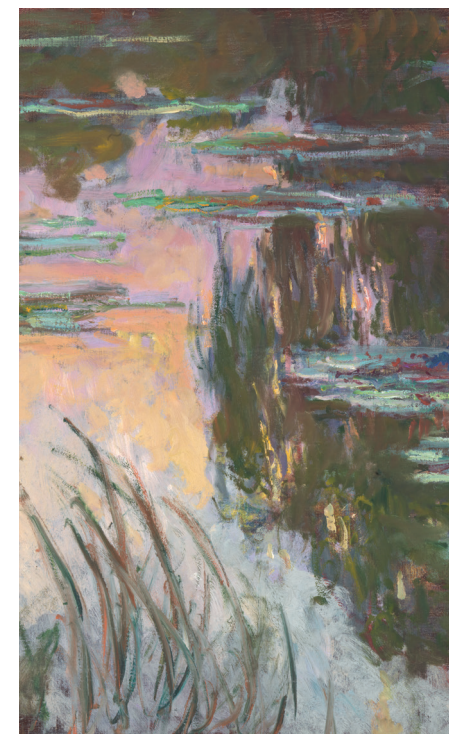
Akseli Gallen-Kallela, Lake Keitele, 1905

Interestingly, the Rotunda at Ranelagh, was situated in Chelsea, just metres away from our Chelsea Flower Show garden, and the work was painted by Canaletto while he was living in England for a brief period.

For the planting scheme, MacDonald looked to Turner's 'The Fighting Temeraire' and Monet's 'Water-Lilies, Setting Sun' for guidance on colour. The fiery hues of yellow, orange, and rust danced alongside the soft pinks and radiant oranges, were chosen to echo the vibrant blooms depicted in these paintings.

Water features cascade through the garden, inspired by the tranquil scenes of Gallen-Kallela's 'Lake Keitele' and the reflective waters in Monet's 'The Museum at Le Havre'. These elements add a dynamic layer of serenity to the space.

Even the topiary pieces were carefully curated, to resemble 'plants imitating art' reminiscent of the trees in Van Gogh's 'A Wheatfield, with Cypresses' and Cezanne's 'Landscape with Poplars'.



Water-Lilies, Setting Sun, Claude Monet, about 1907



The Water-Lily Pond, Claude Monet, 1899

## More Information

### Boodles

[boodles.com](http://boodles.com)

Honour Wainwright

*Head of Marketing*

020 7647 1348

[honourwainwright@boodles.com](mailto:honourwainwright@boodles.com)

### Landform Consultants

[landformconsultants.co.uk](http://landformconsultants.co.uk)

Catherine MacDonald

*Principal Landscape Designer*

01276 856 145

[catherine@landformconsultants.co.uk](mailto:catherine@landformconsultants.co.uk)



@ 2024 Copyright Boodles

Boodles jewellery and products are all registered and protected by copyright and design right laws under the Copyright Designs and Patents Act 1988 and equivalent laws worldwide. Unauthorised reproduction of all or part of our products or any other proprietary material will constitute an act of infringement contrary to both civil and criminal laws and will be pursued. Boodles is a registered trademark. Jewellery is shown larger than life. E&OE.

Boodles takes ethical diamond sourcing and sustainability related matters very seriously.

Our policy on Conflict Diamonds: Boodles diamonds have always been purchased from legitimate sources not involved in funding conflict and in compliance with United Nations resolutions. We hereby guarantee that all Boodles diamonds are conflict free, based on our personal knowledge and/or written guarantees provided by all suppliers of our diamonds. We are working with Hummingbird Resources to ensure Single Mine Origin gold is incorporated in all our jewellery collections.

Boodles is a certified member of the Responsible Jewellery Council.

## Contributors

The National Gallery

*Charity Partner*

[nationalgallery.org.uk](http://nationalgallery.org.uk)

Gadd Brothers

*Landscape Contractor*

[gaddbrothers.co.uk](http://gaddbrothers.co.uk)

Burlington Stone

*Hard Landscape Material*

[burlingtonstone.co.uk](http://burlingtonstone.co.uk)

Lawn & Border Landscapes

*Landscape Contractor*

[lawnandborderls@gmail.com](mailto:lawnandborderls@gmail.com)

Hot Metal Engineering

*Metalwork & Water Features*

[info@hmeng.co.uk](mailto:info@hmeng.co.uk)

Creepers Nursery

*Main Plant Supplier*

[creepersnursery.co.uk](http://creepersnursery.co.uk)

Deepdale Trees

*Tree Supplier*

[deepdale-trees.co.uk](http://deepdale-trees.co.uk)

Kelways Nursery

*Perennials*

[kelways.co.uk](http://kelways.co.uk)

Rymer Trees

*Perennials*

[rymertrees.co.uk](http://rymertrees.co.uk)

Jon Wheatley & Terry Porter

*Dahlia's*

Landscape Plus

*Light Fittings*

[landscapeplus.com](http://landscapeplus.com)

Steel Landscaping Co.

*Metal Edging*

[steellandscapingco.co.uk](http://steellandscapingco.co.uk)

Modern Garden Company

*Furniture*

[moderngarden.co.uk](http://moderngarden.co.uk)

LSA International

*Glassware Accessories*

[lsa-international.com](http://lsa-international.com)



The Garden Room, Boodles, Sloane Street incorporating the structure from 'The Boodles Secret Garden' RHS Chelsea Flower Show 2021

## Locations

Bond Street	Liverpool
Sloane Street	Chester
Harrods	Manchester
Royal Exchange	Leeds
The Savoy	Dublin

For more information  
on our jewellery collections,  
please contact us at  
[onlineteam@boodles.com](mailto:onlineteam@boodles.com)

 @boodles

All paintings © The National Gallery, London

**BOODLES**  
1798

[boodles.com](http://boodles.com)





# THE BOODLES NATIONAL GALLERY COLLECTION

The National Gallery is our nation's treasure box: home to one of the world's greatest collections of art. Since opening in 1824, it has inspired artists and creatives of every description. Now, to mark 200 years, Boodles have created a collection of high jewellery to celebrate this landmark year.

Three new Boodles suites take inspiration from artistic techniques: Play of Light, Brushstrokes and Perspective. A fourth, Motherhood, acknowledges a key theme of the Gallery itself – as evidenced by the various representations of maternal love which adorn its many walls, from the multitude of Madonnas in its earliest artworks, to Jan van Eyck's expectant mother in *The Arnolfini Portrait*, to 'La Maternité' by Pablo Picasso.

*Please note the 'National Gallery Collection' is strictly embargoed until its launch on 11th May 2024*

# PLAY OF LIGHT

Finnish artist Askeli Gallen-Kallela's painting of Lake Keitele in central Finland was the inspiration behind the Play of Light 'Lake Keitele' pendant, bangle and earrings. Boodles designers responded to the distinctive zigzag pattern on the water's surface, now mirrored by rows of marquise cut diamonds. The blue-white shimmer of light in the painting dazzles as amongst the stones.

A brighter, more colourful palette informs the necklace, earrings and ring in the second Play of Light set. Claude Monet's 'Water-Lilies, Setting Sun' depicts his water garden in Giverny. It's one of around 250 canvases painted of the garden over the last two decades of Monet's life. The suites evoke an experimental approach to capturing the modulations of light as it transforms water, coming to life in cheerful pink tourmaline ovals and peridot cushions.

George Seurat's 'The Morning Walk' depicts a scene by the Seine, in bold dabs of colour. Horizontal bars of sapphire and diamond recreate the river in our ring. And in the pendant, they're spun ninety degrees. Whereas Pierre-August Renoir's picture of Moulin Huet Bay – with its bright sea blues and lemony sparkles were the impetus behind the corresponding bangle, pendant, ring and earrings.

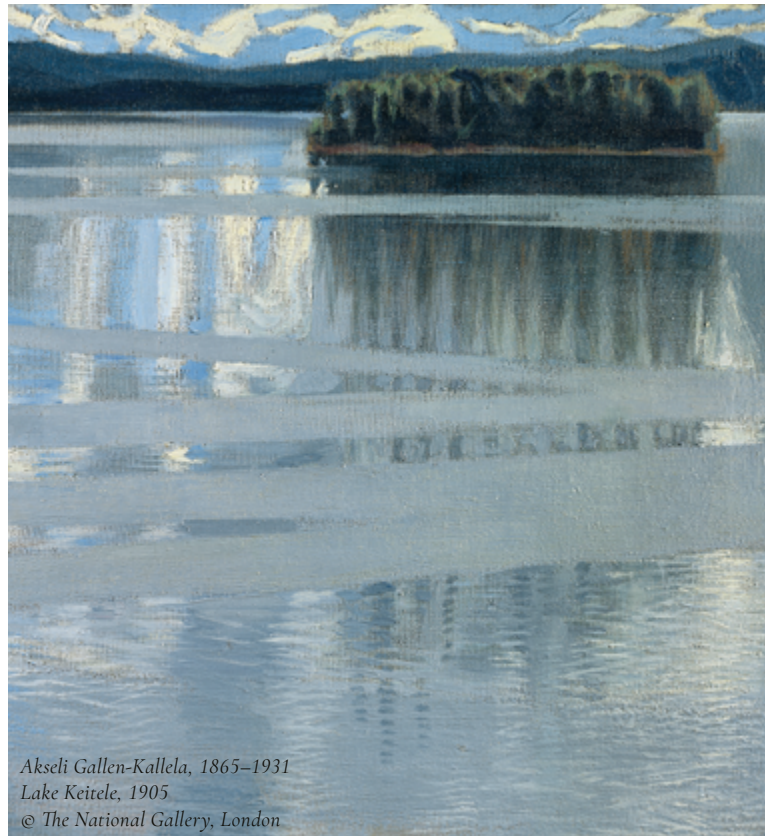


*Play of light: Collar*



*Play of light: Earrings*

All paintings © The National Gallery, London



*Akseli Gallen-Kallela, 1865–1931  
Lake Keitele, 1905  
© The National Gallery, London*

Please note the 'National Gallery Collection' is strictly embargoed until its launch on 11th May 2024

# PERSPECTIVE

Canaletto's 'Piazza San Marco' and 'Entrance to the Cannaregio' inspired our 'Perspective' bangle. In the former work, there's a sense we're right there – in among the action of the colonnade, glancing through an archway into 1758. The arches that line Saint Mark's Square and shape thousands of windows throughout the city's palaces are key motifs in these pieces. In the ring and bangle, you can look through an arch to see one further away. The mystery of Venice, a city of masks, creates intrigue amid the white diamonds. The bangle features Ashoka cut stones: a unique cut featuring 62 facets, only available to buy from Boodles in Europe.



*Perspective: Bangle set in platinum*



*Perspective: Earrings & rings set in yellow gold*



*Rebecca Hawkins, sketching ideas for Perspective*



*Canaletto, 1697–1768  
Venice: Entrance to Cannaregio, probably 1734–42  
© The National Gallery, London*

# BRUSHSTROKES

Paul Cezanne's 'Avenue at Chantilly', 'Hillside in Provence' and 'Bathers' all inform our new 'Brushstrokes' suite. Cezanne's loose, open use of oil paint – developed from his work with watercolours – suggests dashing, dynamic motion. Boodles designers sought to bring to life the 'swoosh' of his brush in the bracelet, earrings and collar. The 'Brushstrokes' ring is one of the stars of the show: at its heart, an 18.64 carat aquamarine.



*Brushstrokes: Bracelet*



*Brushstrokes: Ring featuring an 18.64 carat aquamarine*



*Rebecca Hawkins, gathering inspiration at The National Gallery*

*Please note the 'National Gallery Collection' is strictly embargoed until its launch on 11th May 2024.*



# MOTHERHOOD

Rather than an artistic technique, but a re-occurring theme; 'Motherhood' in all of its forms is a unifying theme in the Gallery. From the tender portrayals seen in Sassoferrato's painting to the depictions of the Virgin Mary and Christ child, the essence of motherhood, characterised by loving care, echoes timelessly through the centuries. The embrace, of figures' heads leaning lovingly and arms curved in gentle embrace, serves as the inspiration for our Motherhood suite. Each piece, from aquamarine or pink tourmaline pendants to rings and earrings featuring white and pink diamonds, captures the enduring devotion inherent in the portrayal of motherhood in art.

Painted around 1508-1510, the image is a portrait of devotion. The whole composition is intended to create harmony: this picture



Sassoferrato, 1609-1685  
The Virgin and Child Embracing, probably 1660-85  
© The National Gallery, London

The Virgin and Child Embracing, Sassoferrato

All paintings © The National Gallery, London

would have originally belonged to a rich private patron and would have enjoyed pride of place in their home as a focus for prayer. The pastel-like pinks and blues of Raphael's palette find their echo in our aquamarine pendant in platinum, and pink tourmaline pendant in 18 carat Single Mine Origin yellow gold. In both, a white moonstone has been cut perfectly to shape, creating a sense of connection and wholeness.

To create this collection, Boodles designers gained special access to the Gallery, gaining valuable insight on the detail on some of the Gallery's finest treasures and transforming that into unique and wearable works of art. ■



Motherhood: Pendant, earrings and ring



Please note the 'National Gallery Collection' is strictly embargoed until its launch on 11th May 2024.

## BOODLES PRESS OFFICE:

Honour Wainwright  
Boodles Head of Communications  
honourwainwright@boodles.com  
+44 20 7647 1343

Isabel Eversfield  
PR Executive  
isabeleversfield@boodles.com

Liz Hudson  
PR & Social Media Co-ordinator  
lizhudson@boodles.com

 boodles.com  
 @boodles



*Motherhood pendants*



*Play of Light earrings*



*Motherhood Suite*



*Lake Kietele pendant*



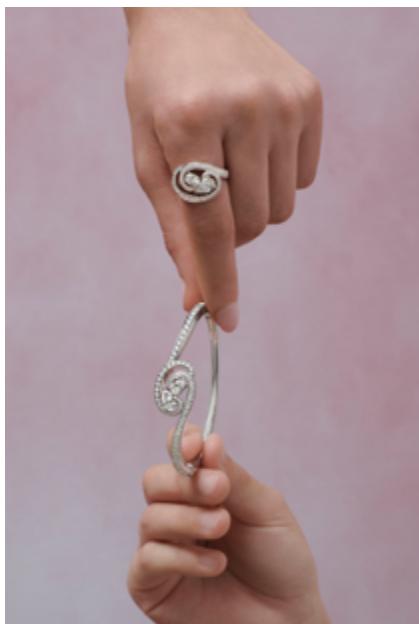
*Play of Light pendant and earrings*



*Play of Light rings*



*Play of Light rings*



*Motherhood bangle and ring*



*Perspective bangle*