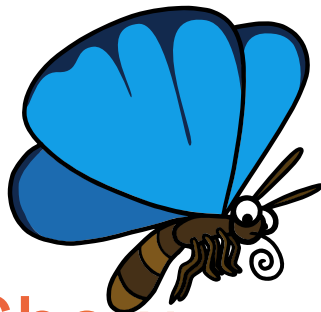


The Planet Good Earth Garden

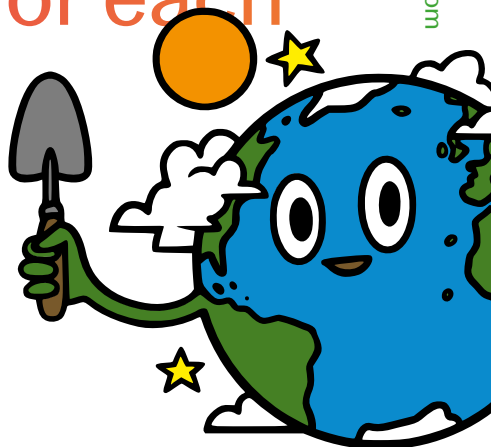


Chelsea Flower Show
21 — 25 May 2024
Great Pavillion,
Stand HC22

Environmental
togetherness
— empowering young
people to care for each
other and their
environment.

www.planetgoodearth.com

**PLANET
GOOD
EARTH**



The Garden

Designed by Urban Organic and Betongpark in partnership with UK CIC Planet Good Earth, the Planet Good Earth Garden is a pioneering skateable and edible exhibit that links skateboarding and community gardening to support mental health and promote environmental action. With a focus on building outdoor learning experiences, this groundbreaking garden shows how skateboarding and horticulture can contribute to green initiatives and healthier urban landscapes. It demonstrates how growing and recreation can work together to positively impact youth communities.

In collaboration with City Mill Skate, a University College London Public Art project for research and community engagement, this dynamic feature champions youth empowerment and wellbeing for young people living in urban environments. By providing a playful and engaging space, it encourages physical activity, presents positive role models, fosters meaningful relationships, and nurtures self-confidence among young individuals.

Functioning as an educational haven, this vibrant space boasts edible planting arranged in a forest garden layout, offering an immersive, productive, and wildlife-friendly environment.

The Planet Good Earth Garden was created by incredible people who have been generous with their time and knowledge and are dedicated to their crafts.

A special thanks to our wonderful sponsor "Project Giving Back", our entire team, our volunteers, and all our friends and family for their constant support for sharing this story.

"The Planet Good Earth Garden is created by a group of skateboarders, food growers, and parents who believe that green spaces, good food, and excitement should be at the heart of our communities."

Louise Page, Founder, Planet Good Earth

The Planet Good Earth Garden

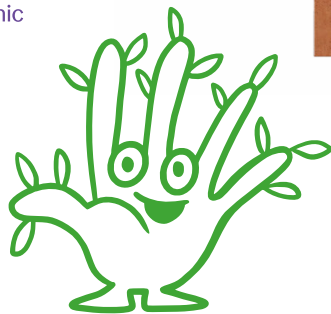
Fruit trees provide a canopy, easy harvests and opportunities to learn pruning techniques.

Soft fruit and artichokes demonstrate perennial, low maintenance, wildlife-friendly food growing.

Robust pavers and a milled granite ramp facilitate skateboarding, providing opportunities for fun, making friends and staying active.

“A forest garden is a low-maintenance option, yielding abundant food and resources with minimal investment of time and effort. It serves as a cost-effective and practical method to maximise space for play while providing a welcoming planted landscape.”

Jack Astbury, Urban Organic



Annual vegetables in flower educate on plant life cycles and self-seed for continual harvests.

Hydroponics and fungiculture increase food production, broaden educational opportunities and demonstrate alternative growing techniques.

Edible ground cover smothers weeds and protects soil, whilst edible flowers add beauty and colour.

Hops and wineberries scramble through trees.

Contractors:
Betongpark, Urban Organic,
Stewart Landscapes.

Nurseries & Seed Suppliers:
Urban Organic, Edulis, Agroforestry Research Trust, Majestic Trees, Norfolk Herbs, Caley Brothers, Planet Good Earth, Vital Seeds, Tamar Organics.

Supporters:
UCL/City Mill Skate, The Ben Raemers Foundation, Hereford Skatepark, Black Mountains College, Vertical Horizons, Baxter Storey, Studio LOUISE, Carhatt, Niwaki, Jethro Haynes.



Here are some of the amazing plants we champion in our garden. To find out more, and for our full plant list, please visit www.planetgoodearth.com or use the QR code below.

Malus domestica
'Reinette du Canada' (Apple Tree)
Dystaenia takesimana
(Wild Korean Celery)
Ribes uva-crispa
(European Gooseberry)
Brassica napus (Red Russian Kale)
Brassica oleracea var ramosa
(Perennial kale)
Peltaria alliacea (Garlic Cress)
Borago officinalis Bianca
(Borage Alba)
Ligusticum scoticum
(Scottish Lovage)
Fragaria vesca Muricata
(Plymouth Strawberry)
Atriplex rosea (Orache Red)
Pleurotus ostreatus
(Grey Oyster Mushroom)



Planet Good Earth CIC is a horticultural platform that aims to inspire the next generation of gardeners to drive a bigger movement towards a better world through environmental togetherness. Our organisation provides fun and playful community experiences that support young people's mental health and well-being, and provides them with the tools they need to cultivate positive change together.

We host youth-led events, workshops, and installations centered around horticulture, focusing on delivering outdoor learning experiences. Our approach offers a fresh perspective on education that can outrun the pace of environmental degradation. Our program donates resourceful zines, seeds, and plant material to support young people in protecting our planet and cultivating a greener future.

In partnership with



**PLANET
GOOD
EARTH**

Designed by experienced collaborators Urban Organic and Betongpark, known for their dedication to greener urban landscapes, this partnership exemplifies the fusion of urban sustainability and recreation through edible landscaping.



Betongpark is a London based practice specialising in the design and construction of skateparks and other skateable landscapes.

Samuel Elstob is a chartered landscape architect who integrates skateable spaces into urban landscapes and contributes to city masterplans, flood mitigation solutions, and interim community use facilities.

Stuart Maclure is Development Manager at Betongpark and helps lead the team across UK design and construction projects, focusing on design development, project planning, and stakeholder relations.

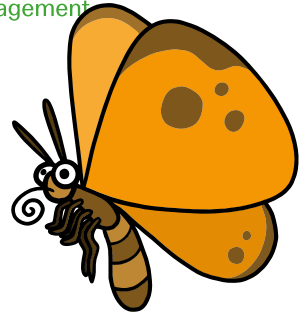
Both Samuel and Stuart are lifelong skaters who bring an interdisciplinary approach to the design of skateable spaces and their surrounding landscapes.

Legacy

The RHS Chelsea Planet Good Earth Garden will be relocated to Hereford Skatepark. This community initiative will continue the legacy and create a pilot for nationwide broader adoption.

In Hereford, the garden will form part of a larger edible skatepark and community-focused educational space that will house a kitchen garden, cafe and mixed-use hub for young people, and provide a space accessible to schools to support young people's health, well-being and wider development. The space will be supported by Black Mountains College, a new and imaginative education centre with a mission to promote ecological action and adaptation.

Jack Astbury specialises in creating biodiverse, healthy urban environments by incorporating food growing, wildlife provision, and greenery into built spaces. His team at Urban Organic transform rooftops and disused areas, offering interactive workshops and sustainability measures to enhance environmental responsibility and user well-being. They assist clients in achieving higher BREEAM ratings through improved building performance in areas such as energy efficiency, water usage, and waste management.



For more information:
www.planetgoodearth.com
[@planetgoodearth](https://twitter.com/planetgoodearth)



Buy our seeds and support our initiatives

**PLANET
GOOD
EARTH**



Environmental Stewardship

Youth Empowerment

Planet Good Earth Fund

Let's grow togetHERness



Community Engagement

DONATE!



www.planetgoodearth.com @planetgoodearth

Edible skatepark landscapes are emerging as vibrant horticultural youth hubs that have the potential to transform neglected communities across the UK.

Our fundraising efforts aim to bring these innovative spaces to some of the nation's most underserved areas. By combining nature, horticulture, and skateboarding, these hubs will offer immersive learning experiences and environmental education, enriching the lives of young people.

Donate today and help us bring green, innovative spaces to communities who need accessible ways to reconnect with food and nature.



Skill Building

Social Connections

DONATE!

PLANET GOOD EARTH

PLANET GOOD EARTH

Contact:
louise@studiolouise.co
07791182256

RHS Chelsea Planet Good Earth Garden: Plant list

1. <i>Achillea ageratum</i>	English mace
2. <i>Allium 'Schoenoprasum'</i>	Chives
3. <i>Allium ampeloprasum</i>	Wild leek
4. <i>Allium hookeri 'Zorami'</i>	Hooker's onion 'Zorami'
5. <i>Allium vineale 'Hair'</i>	Chives
6. <i>Anethum graveolens</i>	Dill
7. <i>Atriplex rosea</i>	Red orache
8. <i>Beta vulgaris 'Rainbow Chard'</i>	Chard
9. <i>Beta vulgaris subsp. vulgaris</i>	Rainbow chard
10. <i>Borago officinalis</i>	Borage blue
11. <i>Borago officinalis 'Bianca'</i>	Borage white
12. <i>Brassica juncea 'Green Wave'</i>	Chinese mustard 'Green Wave'
13. <i>Brassica juncea 'Mizuna'</i>	Japanese mustard
14. <i>Brassica juncea 'Osaka Purple'</i>	Giant mustard
15. <i>Brassica juncea var.rugosa 'Purple Frills'</i>	Mustard 'Purple Frills'
16. <i>Brassica oleracea 'Dwarf Green Curled'</i>	Dwarf kale
17. <i>Brassica oleracea (Acephala Group) 'Nero di Toscana'</i>	Kale
18. <i>Brassica oleracea (Acephala Group) 'Red Russian'</i>	Siberian kale 'Red Russian'
19. <i>Brassica oleracea var. palmifolia</i>	Cavelo nero
20. <i>Brassica oleracea var. ramosa</i>	Perpetual kale
21. <i>Bunias orientalis</i>	Turkish rocket
22. <i>Calendula officinalis 'Art Shades'</i>	Pot marigold
23. <i>Calendula officinalis 'Zeolights'</i>	Pot marigold
24. <i>Chamaemelum nobile</i>	Common chamomile
25. <i>Chenopodium bonus-henricus 'Good King Henry'</i>	Good King Henry
26. <i>Coriandrum sativum</i>	Coriander
27. <i>Cynara cardunculus 'Argenté de Genève Inerme'</i>	Cardoon
28. <i>Cynara cardunculus Scolymus Group</i>	Globe artichoke
29. <i>Dystaenia takesimana</i>	Korean celery
30. <i>Foeniculum vulgare</i>	Common fennel
31. <i>Foeniculum vulgare 'Purpureum'</i>	Bronze fennel
32. <i>Fragaria Vesca 'Fructu Albo'</i>	Wild strawberry
33. <i>Fragaria vesca 'Muricata'</i>	Plymouth strawberry
34. <i>Galium odoratum</i>	Sweet woodruff
35. <i>Hesperis matronalis</i>	Sweet rocket
36. <i>Humulus lupulus 'Aureus'</i>	Golden hops
37. <i>Ligusticum scoticum</i>	Scottish lovage
38. <i>Malus domestica 'King of the Pippins'</i>	Apple tree
39. <i>Malus domestica 'Red Belle de Boskoop'</i>	Apple tree
40. <i>Malus domestica 'Reinette Grise du Canada'</i>	Apple tree
41. <i>Matteuccia strutheropteris</i>	Ostrich fern
42. <i>Mentha suaveolens</i>	Grapefruit mint
43. <i>Mentha x piperita 'After Eight'</i>	Chocolate mint
44. <i>Myrrhis odorata</i>	Sweet cicely
45. <i>Origanum majorana</i>	Sweet marjoram
46. <i>Origanum vulgare 'Aureum'</i>	Golden marjoram
47. <i>Oxalis</i>	Wood sorrel
48. <i>Oxalis spiralis vulcanicola 'Plum Crazy'</i>	Oxalis 'Plum Crazy'
49. <i>Oxalis spiralis vulcanicola 'Sunset Velvet'</i>	Oxalis 'Sunset Velvet'
50. <i>Peltaria alliacea</i>	Garlic cress
51. <i>Pleurotus ostreatus</i>	Grey oyster mushroom
52. <i>Rheum rhabarbarum 'Champagne'</i>	Rhubarb
53. <i>Ribes rubrum 'Gloire de Sablons'</i>	Redcurrant
54. <i>Ribes uva-crispa 'Hinnonmaki Red'</i>	Gooseberry
55. <i>Rubus 'Black Diamond'</i>	Blackberry
56. <i>Rubus arcticus 'Tarja'</i>	Arctic raspberry
57. <i>Rubus phoenicolasius</i>	Wineberry
58. <i>Rumex sanguineus</i>	Red-veined sorrel
59. <i>Stachys affinis</i>	Chinese artichoke
60. <i>Symphytum x uplandicum 'Bocking 14'</i>	Russian comfrey
61. <i>Thymus pulegioides 'Kurt'</i>	Creeping lemon thyme
62. <i>Tropaeolum majus 'Blue Pepe'</i>	Babyleaf nasturtium
63. <i>Valerianella locusta</i>	Lambs lettuce
64. <i>Viola soraria</i>	Common blue violet
65. <i>Viola tricolor</i>	Wild pansy



URBAN
ORGANIC™



Jack Astbury / Urban Organic

URBAN ORGANIC is led by Jack Astbury, a pioneer in sustainable food production and urban greening who transforms neglected city spaces into flourishing edible landscapes. Boasting a decade of expertise in urban agriculture, his background in ecology and conservation helps cities become cleaner and greener by creating outstanding gardens and green spaces.

They provide solutions for individuals, businesses, and communities that want to incorporate food growing, wildlife provision, and greenery into their built environments and handle the design, construction, and continuous care of living landscapes.

Their team of growers, designers and landscapers specialise in transforming rooftops and disused spaces into biodiverse, healthy urban environments. They grow food for chefs, host interactive horticultural workshops, and support clients in implementing sustainability measures that create higher-value and lower-risk assets that are better for people and the planet.

Their landscapes are designed to address multiple sustainability criteria, promote environmentally responsible practices and increase the health and well-being of users. They help clients achieve higher BREEAM ratings by improving the environmental performance of buildings, including energy efficiency, water usage, materials selection, waste management, pollution, ecology, social sustainability and food production.

Jack's philosophy is rooted in the belief that gardens should be more than just ornamental; they should serve as vibrant ecosystems where edible plants flourish alongside wildlife species, creating sustainable environments that inspire, enrich, and nourish people and the planet. His gardens incorporate innovative techniques designed to mitigate the effects of climate change, including composting systems, drought-tolerant plants, sustainable drainage systems, and rainwater harvesting methods.

At the core of Jack's design philosophy is integrating climate-appropriate edible plants. He selects plants that thrive in urban environments while providing food, shelter, and sustenance to local wildlife. He balances the ornamental aspects of garden design with the functionality of growing edible plants by carefully curating a diverse array of edible flowers, fruiting trees and foliage.

Jack's commitment to excellence, sustainability, and community engagement continues to inspire a new era of urban gardening, where every space holds the potential to be a thriving oasis of life and vitality. He envisions a world where cities embrace food production as integral to urban planning. Through continued innovation and advocacy, he aims to shape the evolution of edible landscaping, inspiring communities to cultivate greener, more sustainable urban environments.

Urban Organic works with hospitality and corporate partners alongside various community projects, including Norwich Farm Share & Deptford Little Farm. One of his most successful projects is the Coutts Skyline Garden on The Strand, London.



For further information please contact Louise Page at Studio LOUISE
louise@studiolouise.co
07791182256



Sam Elstub & Stuart Maclure / Betongpark

BETONGPARK is a specialist design and construction firm providing bespoke concrete skateparks and other skateable structures to clients in the public and private sectors. Initially founded in Oslo in 2012, Betongpark opened its London design studio in 2020 under the direction of construction experts from the Oslo head office. Drawing on a team comprised of trained landscape architects, skatepark designers, world-renowned concrete shapers and project managers, Betongpark spans disciplines and works with passion and an eye for detail. As skateboarding increases in popularity following its inclusion in the Olympic Games, Betongpark is a one-stop shop for clients who want to deliver activity spaces across the UK.

Based in their London studio, Samuel Elstub is a versatile skatepark designer whose love for skateboarding seamlessly intertwines with his professional expertise as a chartered landscape architect. With a decade of experience designing in the built environment, he has crafted a diverse portfolio encompassing public realm projects, infrastructure design, master planning, and urban development.

His work at Betongpark is marked by a continuing commitment to fluently integrate skateable spaces into urban landscapes, transcending conventional boundaries between public realm design and skatepark construction. His projects are characterised by their integration into city masterplans, innovative flood mitigation solutions utilising skateparks, and the creation of meanwhile or interim use facilities.

Samuel's approach to skatepark design hinges on utilising hard landscape materials, strategic planting schemes, sustainable drainage systems, and fostering community co-design processes. His expertise and dedication to community-centric landscape architecture come through in his role as a skatepark designer, notably exemplified by his involvement in the Hackney Bumps Community project. Over the past four years, Samuel has worked closely with the community in fundraising efforts, revitalising, and maintaining the beloved 1980s skatepark.

Leading the team across UK design and construction projects is Development Manager Stuart Maclure. Stuart supports design development, project planning and stakeholder relations and is driven by delivering beautifully designed free, creative spaces.

Stuart is a lifelong skateboarder, passionate campaigner and activist, who works to challenge the boundaries of public space provision and governance. Having worked on some of the most prolific skateboarding campaigns in the UK, he is dedicated to promoting and celebrating skateboard culture. Alongside his position as director of Long Live Southbank, he is also cofounder of the international conference Pushing Borders which brings together academia and skateboarding as springboard for collaboration.