



Welcome to RHS Partner Gardens

Wednesday 14 January 2026



Hello from The RHS Partner Gardens Team!

Head of Horticultural Relations

- Emma Allen

Partner Garden Manager

- Pru – Tues - Fri

Partner Garden Co-ordinators

- Emily – Mon, Tues, Wed
- Rebecca – Tues, Wed, Fri am
- Janice – Wed, Thur

partnergardens@rhs.org.uk



Janice, Emily, Rebecca, Pru

RHS Partner Gardens Network 2026

- 240 RHS Partner Gardens this year
- Welcome to all our New Gardens
- Highly valued RHS membership benefit
- Just over **half** our members visit Partner Gardens **at least once a year**
- Your support contributes to our charitable work – *focused on encouraging a love of gardening and gardens across society and investing in scientific research.*



New RHS Partner Gardens 2026

UK GARDENS

Glamis Castle and Gardens, Scotland
Raby Castle and Gardens, County Durham
Goddards, York
York Gate, Leeds
Cusworth Walled Garden, Doncaster
Sefton Park Palm House, Liverpool
Caerau Gardens, Wales
Eden Project, Cornwall
East Lambrook Manor, Somerset

One Garden, Brighton

Walmer Castle Gardens, Kent

Merriments, East Sussex

OVERSEAS GARDENS

Filoli, San Francisco, USA

Radicepura, Sicily, Italy

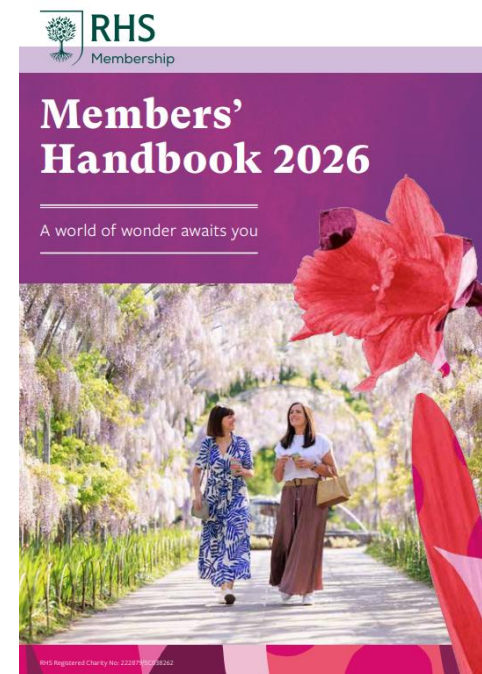
Héronswood, Melbourne, Australia

Cloudehill, Melbourne, Australia

The Garden of St Erth, Melbourne, Australia

RHS Partner Gardens Introduction

- RHS Members' Handbook (Website/App)
- RHS Partner Garden Leaflet
- PG Roundel
- Rules & Regs
- RHS Membership Card
- Staff Access



RHS Partner Gardens Introduction



This card gives you free entry into the RHS Gardens and if your card includes an asterisk (*) free entry to RHS Partner Gardens at selected times. The card is just for you, the member. Please keep it to hand to avoid paying.

Need help?

Call us on 020 3176 5810

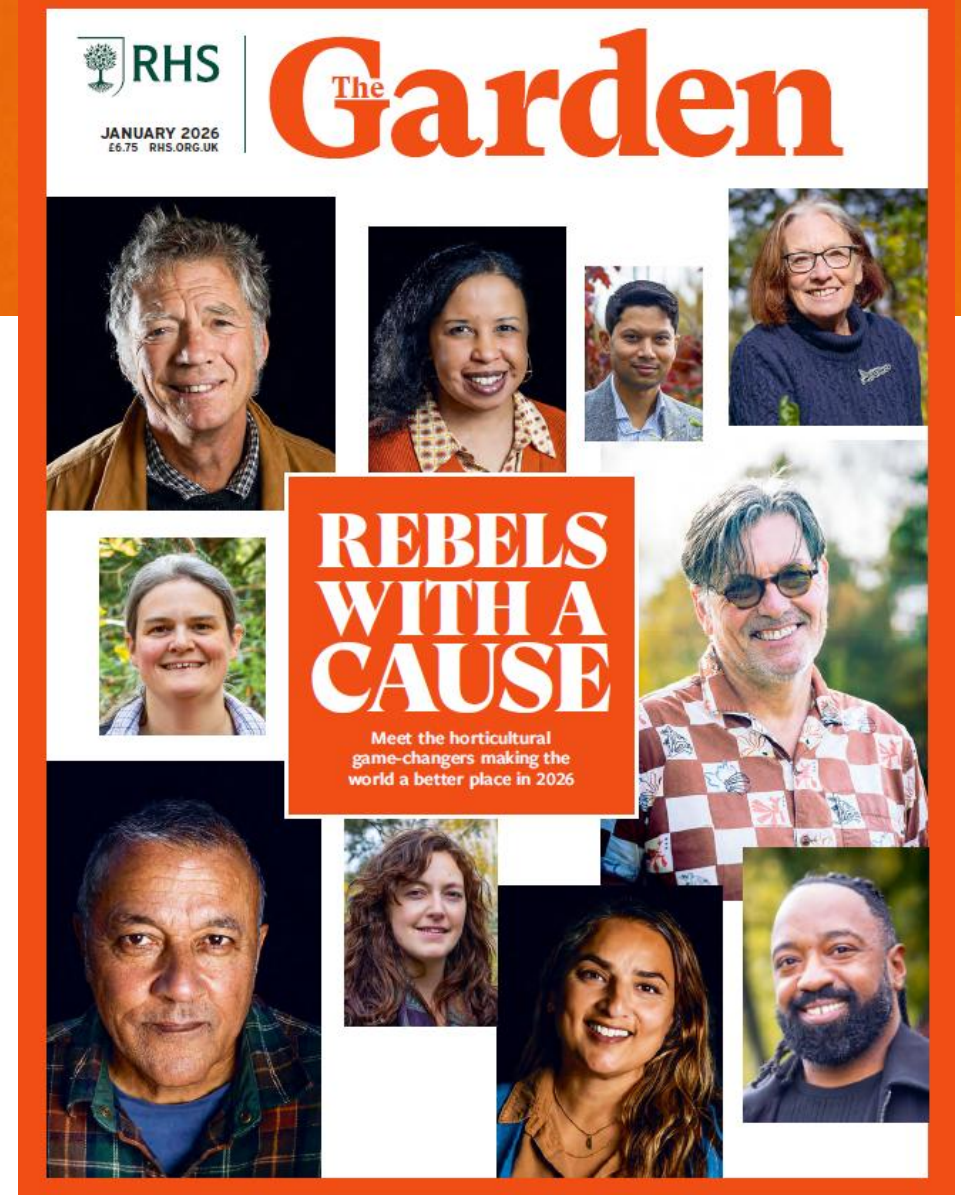
Email membership@rhs.org.uk

Key Partner Garden Benefits – a recap

- Publicity via RHS channels (web, magazine, social, app, newsletters)
- Invitations to forums, networking and gardening advice
- Chelsea President's Drinks – **Tuesday 19 May 2026**
- Complimentary RHS flower show tickets – *RHS Chelsea, Badminton & Sandringham*
- 2 x complimentary passes to visit our five RHS gardens (due early February)

The Garden Magazine

- News Stories
- Features
- Out & About
- Contribution to Expert topics
- Podcast opportunities



The Garden - Out & About

- Contacted by Gill Bendall
- About to work on May gardens
- Small excerpt on your garden focused on what to see, hero plants
- You need to be open to Members that month
- This page may evolve in 2026

94 | rhs.org.uk/partnergardens

RHS Partner Gardens

Free for members to visit this month

SOUTH EAST

OSTERLEY PARK
Jersey Road, Isleworth, London TW7 4RB
nationaltrust.org.uk/osterley
Snowdrops and other early bulbs are at their best when lit by the low winter sun but one of Head Gardener Andy Eddy's favourite sights at this time of year is the semi-circular Garden House, built in 1780 and originally used to display plants when the family was in residence. "In spring we predominantly showcase a range of bulbs in old terracotta pots before they're planted out informally in the garden."
Free entry for members when open.



WALMER CASTLE AND GARDENS
Kingsdown Road, Walmer, Deal, Kent
english-heritage.org.uk
The Plant Heritage National Plant Collection of Galanthus Gracilior Double is held at this new RHS Partner Garden, together with more than 100 other cultivars in displays across the site. Drifts of snowdrops brighten the Woodland Walk, culminating in a display of *Iris reticulata*, winter aconites and hellebores in the Woodland Gardens. Enjoy the scents of winter-flowering shrubs such as *Chimonanthus* and *Sarcococca* and find early-flowering *Crocus tommasinianus* and *Asa* in the meadow, where you can take in views of the castle and the English Channel.
Free entry for members 3 Jan-15 Feb Sat-Sun; 20 Feb-30 Oct Thur-Fri; 1 Nov-20 Dec Sat-Sun, when open.

SISSINGHURST CASTLE GARDEN
Sissinghurst, Cranbrook, Kent TN17 2AB
nationaltrust.org.uk/sissinghurst-castle
"The garden is a synthesis of strong design and exuberant planting," says Head Gardener Troy Smith. "Bare of flowers, its design comes to the fore - climb the tower and you'll appreciate the geometry of the garden rooms, the precision of the grey hedges, the drawing together of all five acres with vista as running north to south and east to west." As the garden starts to awaken this month a carpet of *Crocus tommasinianus* is followed by fabulous magnolia blooms that wrap around the Elizabethan walls of the tower.
Free entry for members Jan-Feb and Nov-Dec, when open.



Wintry reflections in the Upper Lake at Sandringham in Norfolk

SOUTH WEST

THE WALLED GARDENS OF CANNINGTON
Church Street, Cannington, Bridgwater, Somerset TA5 2HA, bhc.ac.uk/the-walled-gardens-of-cannington
"On a crisp frosty morning the Winter Garden displays striking contrasts with scented flowering shrubs, grasses and a selection of dogwoods," says Manager Myerick Huguere. "Dwarf irises, daffodils, anemones, scillas and winter bedding are popping up to bring some bright colour, and the Botanical Glasshouse is full of impressive tropical and sub-tropical flowers - including *Brugmansia*, *Eucharis amazonica* (Amazon Lily) and *Clivia* - along with fascinating cacti and succulents that add great interest all-year-round."
Free entry for members Jan-Feb Wed; Mar-Dec Sat-Sun, when open.

HIDCOTE
Hidcote Barterim, Chipping Campden, Gloucestershire GL54 4LR
nationaltrust.org.uk/hidcote
"New plantings of snowdrops in the leafless beech woodland catch the daylight," says Head Gardener Lottie Allen. "Further signs of life begin to green the once-dormant beds and the crisp-cut hedges redefine Major Lawrence Johnston's work of art, framing views to other areas of the garden and out to the wider countryside." Bright yellow winter aconites edge the Lime Arbour, hellebores border the Lilac Circle and the spidery flowers of witch hazel punctuate the Winter Border.
Free entry for members Jan-Apr and Aug-Nov, when open.

MIDLANDS

CASTLE BROMWICH HISTORIC GARDENS
Chester Road, Castle Bromwich, Birmingham B36 9BT
castlebromwich.halgardens.org.uk
"This is a magical time in our 300-year-old formal garden," says Head Gardener Denise Seckham. "Surrounded by tall walls and protective trees, we are sheltered from the worst of the weather; the skeleton trees shimmer in the frost and evergreen topiary is stark against winter skies." Wander along the 100m Holly Walk, stopping off in the Wildernesses to see blooms of witch hazel, snowdrops, hellebores and winter aconites.
Free entry for members when open (except daffodils).

The Garden – Expert Pick

- Great opportunity for your Head Gardener to feature
- Team always looking for horticultural experts to provide an opinion
- We already have a list of your specialities and National Plant Collections



The Garden – Features

- Occasional 2-3 page features on an RHS Partner Garden
- Needs amazing photography plus an angle



The Garden – News Story

- Send through news and story ideas
- Don't Miss for brief updates
- Ideally need good photo
- Quirky updates more likely to catch News Editor's eye



RHS PARTNER GARDEN

Sustainable revamp for Holker Hall's cascade

The Grand Cascade at Holker Hall, an RHS Partner Garden in Cartmel, Cumbria, has been restored to its former glory. With its ornate stone fountain dating from the 1890s, it forms a central axis for the garden, leading from the formal areas at the bottom to the wilder woodland garden and arboretum at the top.

"The Cascade was created in the 1980s using the skills, knowledge and understanding available at the time," says Head Gardener Matthew Murgatroyd. "Over the past 40 years it became a real struggle to produce even the smallest trickle of water. It was losing thousands of litres of water a day."

Contractors set to work as soon as the garden closed for winter 2023. "We removed tree roots, underpinned the channels to stop them leaking, replaced the main pipework and installed a new 'capture' tank that holds 12,000 litres of water."

The new design taps into drains that feed historic Victorian water tanks. "Rainwater has been harvested for generations at Holker Hall," says Matthew. "The land all around is full of springs and waterways that channel into those tanks."

New high-tech pumps, controlled by touch-screen, will fine-tune water flow to avoid evaporation on hot summer days. Automatic monitoring software will top up the reservoir when water levels are low. "We're having to balance the old systems we've inherited with the modern need for sustainability," says Matthew. "We do have periods of drought, even in Cumbria!"

● Holker Hall offers free entry to RHS members throughout its opening period from 20 Mar–27 Oct.



The cascade is made from limestone with rills inlaid with slate and pebble mosaics



The Garden – Gardening with the RHS Podcast

- Opportunity for weekly podcast
- Send through story ideas
- New PGs feature this week
- [The Gardening with the RHS podcast / RHS](#)

The *Gardening with the RHS* podcast

Each week we talk to RHS experts, along with garden designers, scientists, growers, and the movers and shakers of the horticultural world



Our award-winning *Gardening with the RHS* podcast offers seasonal advice, inspiration and practical solutions to gardening questions.

Trusted gardening professionals give you the latest horticultural advice, scientific research and tried-and-tested techniques to bring out the best in your garden.

Listen to the latest episodes or subscribe for all episodes.

[Subscribe now to the podcast >](#)

Midwinter gardens: Influential plants, Christmas trees and new RHS Partner Gardens

The new year has arrived with an Arctic blast, and so it feels like the perfect moment to retreat indoors and let the garden live in our imaginations for a while. Nick Turrell joins us to continue his countdown of the most influential plants that have shaped human history. Guy Barter shares his practical ideas for making the most of your Christmas tree in the garden and Pru Murray takes us through some of the new RHS Partner Gardens members can enjoy visiting in 2026.



[Useful links: Popular plants](#) | [Christmas trees: types and care](#) | [New RHS Partner Gardens](#)

The Garden – Top Tips & Hot Topics

- **Anything NEW!**
- Remember lead times! Currently commencing work on May issue (out April)
 - Bringing Nature Home
 - Interesting apple stories
 - Growing your own
- Any filming of shows/films at your gardens/celebrity gardener/celebrity visits. The team will respect any confidentiality agreements you have in place.
- Plans to create educational gardens and / or how you are working with community or diverse groups.
- Dogs!

RHS Website

rhs.org.uk/partnergardens

- Monthly themed spotlight on Partner Gardens
- Themed articles
- Plans for more content on Partner Gardens this year
- Partner Garden video
- Searchability via Find a Garden map
- Opportunities for mentions in RHS Member email Newsletters, by region
- List of FAQs connected to the scheme

Website & Newsletters



RHS Partner Gardens

Explore 241 glorious RHS Partner Gardens across the UK and overseas, offering RHS Members* free days out at selected times during the year



Plan the perfect day out

Explore RHS Partner Gardens, events, and seasonal highlights near you:



RHS Partner Garden search

Looking for a local day out? Use the Find an RHS Partner Garden search to discover a garden to visit near you



RHS Partner Garden events

See what's on in your local area, from seasonal gardening events, expert-led courses and hands-on workshops

Spotlight: RHS Partner Gardens open in January

See a range of regional RHS Partner Gardens welcoming members this month



South West
Hotel Endsleigh



South East
Sissinghurst Castle Garden



North West
Biddulph Grange Garden



North East
Burby Hall Gardens & Museum

Latest from RHS Partner Gardens

Keep up with what's blooming, where to go, and what's new in RHS Partner Gardens:



New RHS Partner Gardens

Meet the 18 new RHS Partner Gardens for 2026, from horticultural landmarks to inspiring landscapes



RHS Partner Garden of the Year 2025

Discover the RHS Partner Gardens voted favourites for the joy and tranquillity they bring to visitors



Inspirational RHS Partner Gardens to visit in winter



Enchanting snowdrops at RHS Partner Gardens



An RHS Partner Garden of love



Dazzling bluebell walks at RHS Partner Gardens

RHS Partner Gardens explained

Step into the world of RHS Partner Gardens – see what's on offer and how to visit:



RHS e-Newsletters/Mailings

- Opportunities to feature in Member e-Newsletters
- These will be more feature/plant based in 2026.
- Occasional Member seasonal newsletters too.

Autumnal days out at RHS Partner Gardens



Himalayan Garden and Sculpture Park | Ripon

Free access for RHS Members Wednesday – Sunday until 2 Nov

Explore 45 acres of beautifully planted woodland gardens, lakes and an arboretum alive with autumn colour and stunning sculptures.

[Plan your visit](#)



Nunnington Hall | Near York

Free access for RHS Members when open

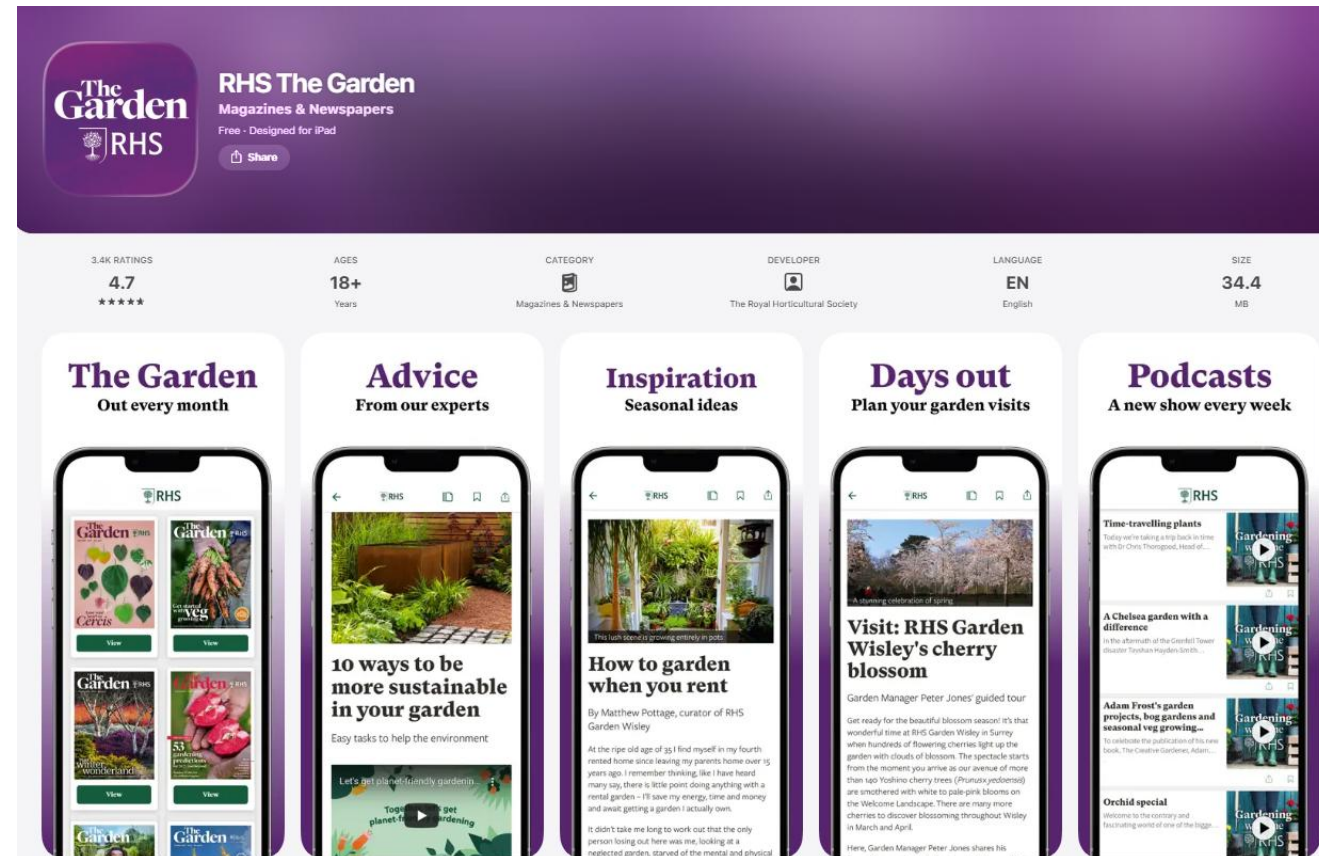
Welcome autumn at Nunnington Hall with its annual fruit harvest celebrations. This National Trust garden, one of the first to go fully organic, sits beside the River Rye in a beautiful Yorkshire setting.

[Plan your visit](#)

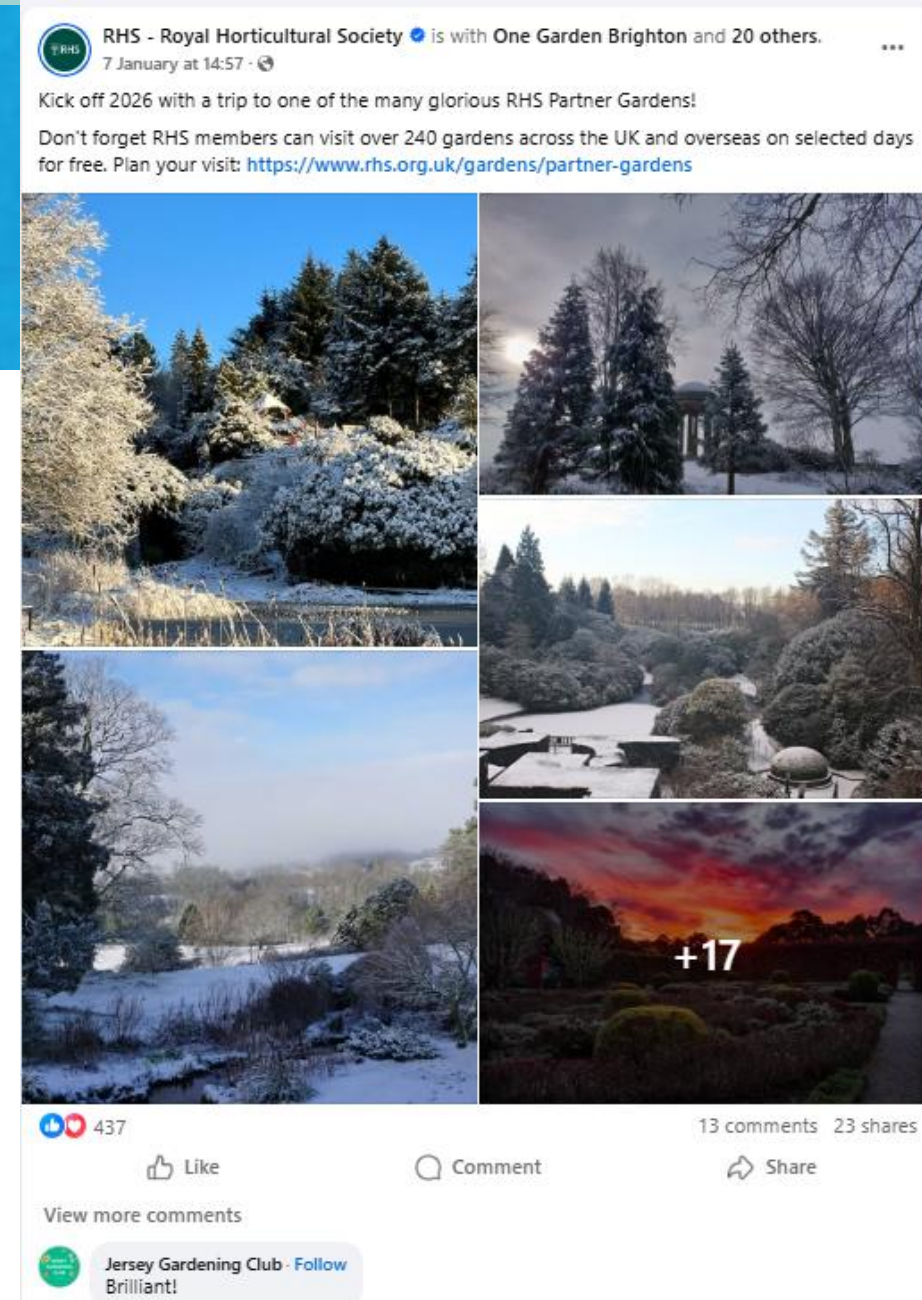
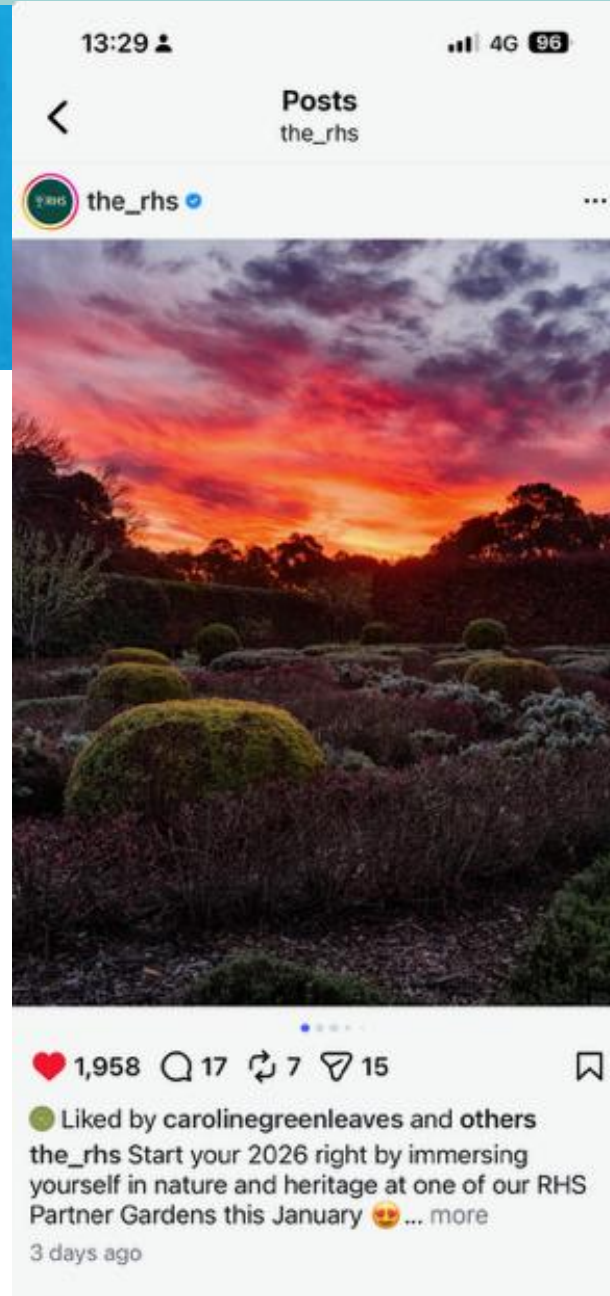
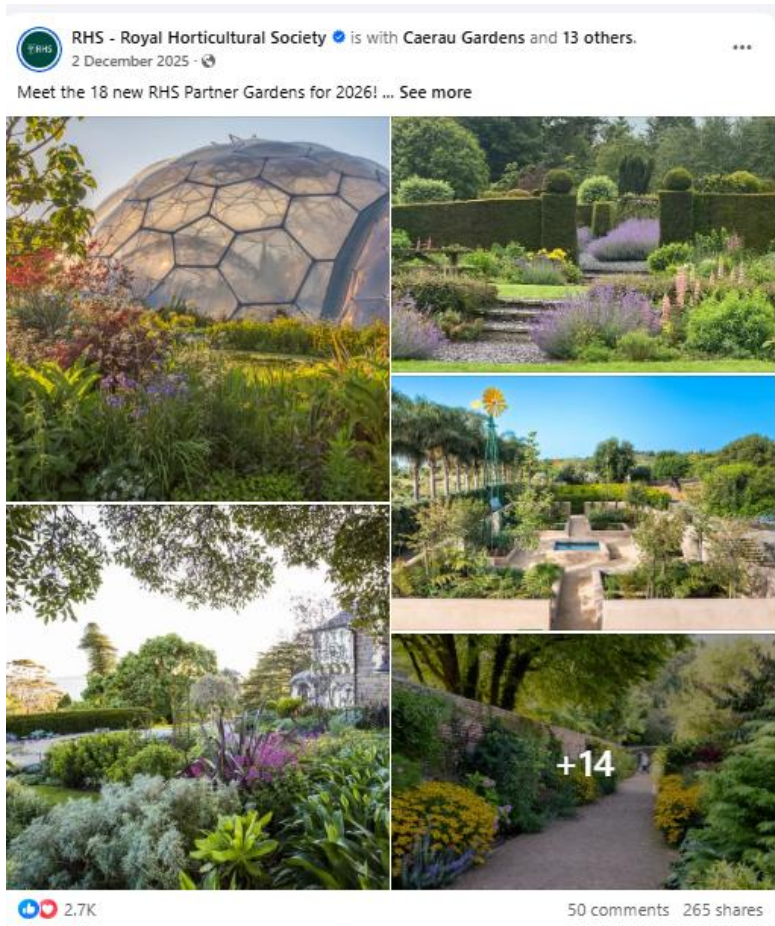
There are more than 230 RHS Partner Gardens to visit for free with your RHS Membership* at selected times. [Click here](#) to find a garden near you.

RHS Garden App

- Growing in usage
- PG of the Week
- Information about the scheme
- Shared articles



Social Media



Social Media

- Send us your images – when asked!
- Quarterly call out for all images (for use for website and social)
- Please send completed image rights form
- Clearly label the image with your garden's name and any photographer's details
- Next call out will be early Feb for images relating to **April, May and June**
- To be featured you need to give free RHS Member access in those months
- Featured on Monthly Facebook albums and Instagram posts
- Partner Garden of the Week

Promoting your Events

- Fill in an Event Sheet
- Offer a 20% discount for RHS Members
- All events appear on the events pages of the RHS website
- Also opportunity to feature in Out & About in the magazine
 - up to 2x a year
- Accompanying Image - all images resized to 940 x 627mm
- Image Rights Form vital



RHS Partner Garden events

Explore a vibrant calendar of seasonal gardening events, expert-led courses and hands-on workshops at RHS Partner Gardens.

[See what's on >](#)

EAST OF ENGLAND

EVENT

FULLERS MILL GARDEN

West Stow, Bury St Edmunds, Suffolk
IP28 6HD fullersmill.org.uk

Snowdrops at Fullers Mill Garden
Every Wed and Fri in February 11am–3pm

This is an opportunity to visit the garden before it begins offering free entry to members from April–October, and to see more than 100 snowdrop cultivars in bloom. The purity of this gorgeous winter flower, set against the backdrop of the gentle waters of the mill pond, River Lark and Culford Stream, is a wonderful sight. *RHS members free on Wednesday dates during this event; non-members and Friday entry £10.*

RHS Partner Garden of the Year competition

- Our annual competition to find most popular Partner Garden, going into its 6th year!
- Voted for by RHS members and **YOUR** visitors.
- Materials will be sent out to you in March.
- Voting opens mid-April – mid Sept.

RHS Shows

RHS Chelsea Flower Show

- Tues 19 – Sat 23 May
- Chelsea Flower Show President's Drinks
– Tuesday 19 May

RHS Badminton Show

- Wed 8 – Sun 12 July

RHS Sandringham Show

- Wed 22 – Sun 26 July



RHS Sandringham PG Show Gardens

- Partner Garden Show Gardens –
‘A Postcard from...’
- Celebrating Head Gardeners’ passion and interest
- Central exhibit with opportunities for all
- Deadline for submissions: Feb 23rd



Gardeners' Networking Days & Forums

Biodiversity and Pests Online Update

- Update on plant health, passports, and pests by RHS Biosecurity Lead, Sara Redstone.
- Wednesday 11th February 9:30am – 10:30am
- Honey Fungus Online Update – March tbc
- Alpine GND – Harlow Carr, September tbc

Further days will be announced very soon!



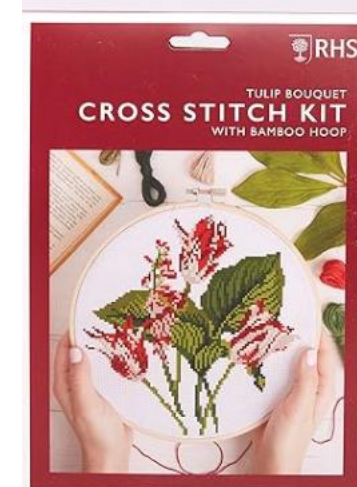
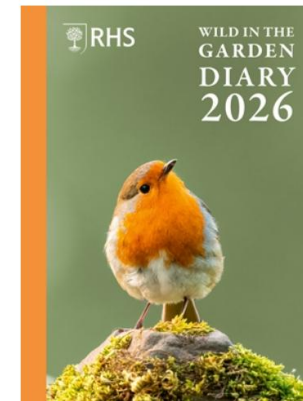
Other Horticultural Benefits

- Access to our RHS Advisory Service
- RHS Seed Scheme
- Wild about Gardens theme
- Educational factsheets for the garden
- Links with RHS Expert Groups



RHS Retail

- Possible to stock RHS Licenced products in your retail outlets if you wish
- Need to order direct from suppliers
- Visit: [RHS Licensed products / RHS](https://www.rhs.org.uk/licensed-products)



Scheme Research

- Review of the RHS Partner Garden scheme
- Attend one of three online discussions
- Fri 23rd Jan 9-10:30am/2–3:30pm
- Mon 26th Jan 12-1:30pm
- Led by Katie Vosper, RHS Head of Insight
- Entirely optional!



Keep in Touch!

- Partner Garden Facebook Page
- Partner Garden toolkit – rhs.org.uk/pgtoolkit
- Email us! partnergardens@rhs.org.uk



Questions?