



RHS

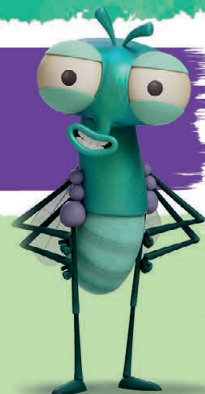
Garden Wisley

AARDMAN
PRESENTS
Lloyd of the Flies

rhs.org.uk/wisley



MAKE A BUG HOTEL

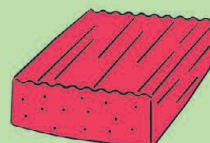


YOU WILL NEED:



A plant pot
(9 – 15cm in size)

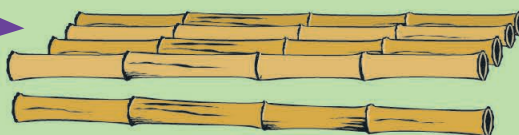
Modelling
clay



String



Bamboo
canes

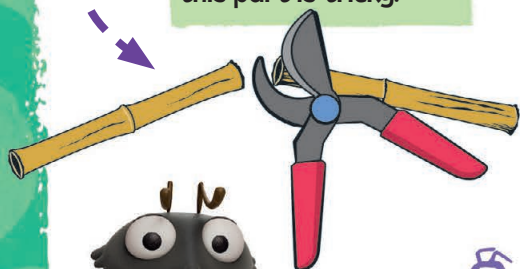


WHAT TO DO:

1

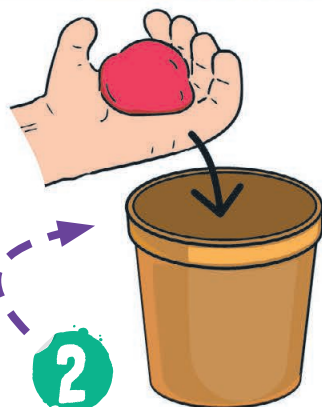
Cut the bamboo canes to a length that fits the depth of your pot.

You will need a grown-up to cut the bamboo canes as this part is tricky.



2

Place some modelling clay in the bottom of the pot.



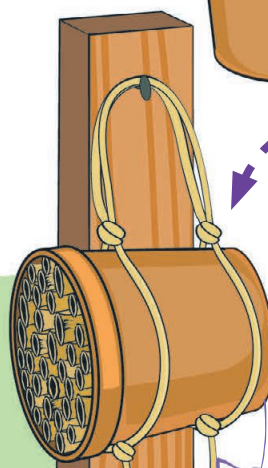
3

Stick the bamboo canes snugly into the pot.



4

Tie some string around the pot and hang it horizontally in a sunny spot, in your garden, for the bugs to move in.



Share an image of your finished bug hotel
📷 @RHSWisley 📺 @rhswisley 📺 @rhswisley

#LLOYD_OFTHFLIES #LLOYDOFTHFLIES
#LLOYDATRHS GARDENS #FINDLLOYD



www.lloydoftheflies.tv