

# N<sup>TH</sup> Degree

CLERKENWELL



## RHS CHELSEA FLOWER SHOW PRESS PACK

# N<sup>TH</sup> Degree

## CLERKENWELL

## ABOUT NTH DEGREE

At Nth Degree, we believe great design starts with a feeling. A sense of calm, connection, and understated elegance that quietly transforms a space. Born from a passion for interiors and a love of outdoor living, we create environments that blur the lines between inside and out—timeless, tactile, and effortlessly inviting.

We're more than a furniture brand. We're curators of space, mood, and lifestyle—bringing together pieces that feel considered, lived-in, and beautifully intentional. Every collection is guided by our creative eye and grounded in our belief that luxury should never feel untouchable. Our approach is rooted in design, but led by emotion. From sculptural silhouettes to soft, tonal finishes, everything we choose reflects a deeper purpose: to elevate the everyday and create lasting spaces where stories are shared and memories are made. Whether it's a private garden, a coastal retreat, or a city rooftop, Nth Degree is about more than how a space looks—it's about how it makes you feel.

*With our roots proudly anchored in Manchester, we continue to operate our online sales and distribution from the North West—where it all began. We've recently opened our first dedicated showroom in the heart of Hale, South Manchester, offering clients an exclusive space to experience our collections in person. Later this year, we're excited to expand further with a second showroom in Clerkenwell, London—widely recognised as the UK's design capital."*

~ Director





# N<sup>TH</sup> Degree

## CLERKENWELL



## RHS CHELSEA FLOWER SHOW

### PRESS RELEASE

#### **First Look: Nth Degree Clerkenwell Showcases Design-Led Outdoor Living at RHS Chelsea**

Nth Degree Clerkenwell is set to unveil its debut trade stand at the RHS Chelsea Flower Show 2025, taking place from Tuesday 20th to Saturday 24th May at The Royal Hospital, Chelsea.

Known for its refined approach to outdoor living, Nth Degree will showcase its design-led collections in a beautifully curated space that celebrates elegance, comfort, and timeless style. The stand offers visitors a first-hand look at how considered design can transform outdoor environments into relaxed, elevated sanctuaries.

This marks a major moment for the brand, which began its journey in the North West and continues to grow its presence across the UK. With a newly opened showroom in Hale, South Manchester, and a second flagship space due to open in Clerkenwell later this year, Nth Degree is fast becoming a go-to destination for homeowners and designers seeking premium outdoor furniture and lifestyle pieces.

The trade stand at Chelsea will feature the brand's N4 Medium Teak collection—a signature range known for its sculptural lines, soft neutral finishes, and enduring quality. Visitors will be invited to explore the space, connect with the Nth Degree team, and discover the brand's unique perspective on modern outdoor living.

Founder and Director of Nth Degree Clerkenwell commented:

"We're proud to be bringing the world of Nth Degree to Chelsea for the first time. It's an exciting opportunity to connect with visitors who share our passion for beautifully considered design and to showcase how outdoor spaces can be both elevated and effortlessly liveable."

# N<sup>TH</sup> Degree

## CLERKENWELL

### Max Parker-Smith designs Nth Degree Clerkenwell's trade stand

For its debut at the RHS Chelsea Flower Show, Nth Degree Clerkenwell has teamed up with garden designer Max Parker-Smith to reimagine what a trade stand can be—shifting from a traditional showcase to a fully immersive, design-led garden experience.

The stand draws on Nth Degree's signature aesthetic: calm, refined, and effortlessly liveable. Max's vision brings this to life through a carefully choreographed landscape—layered greenery, subtle structural elements, and meandering pathways that gently guide visitors through the space.

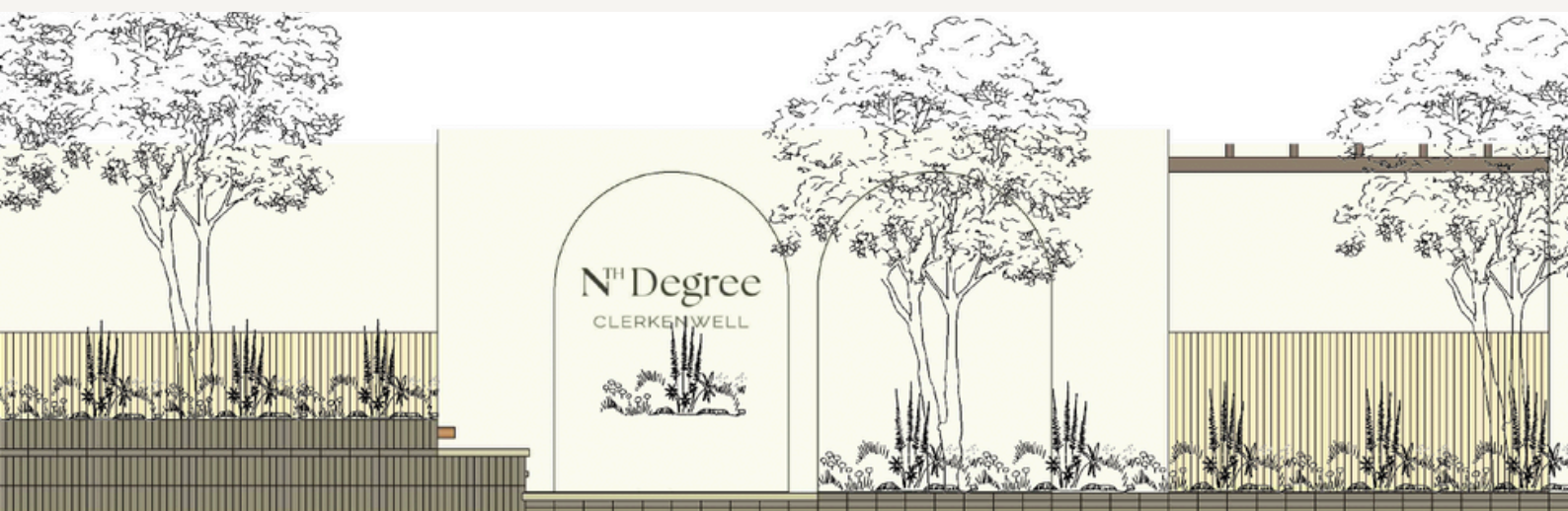
Planting is soft and naturalistic, designed to complement rather than compete with the furniture. The result is a space that feels quietly luxurious, where every detail has been considered and every element has room to breathe.

At the heart of the design is the N1 Light Teak collection, seamlessly integrated into the environment to demonstrate how furniture can live within a garden, not just be placed in one. It's a layout that feels both aspirational and accessible—balancing the artistry of a show garden with the functionality of real outdoor living.

This creative partnership brings together Maximillion Design's intuitive approach to landscape design with Nth Degree's vision for elevated outdoor spaces—proving that when design, atmosphere, and intent come together, the result is something truly special.

*"The design for this years Nth Degree launch at Chelsea Flower Show is based around a contemporary courtyard garden using soft planting & a monochromatic material palette. Stone terraces are dotted throughout the space and at the centre sits a small pavilion with curved arches. Multi-stem trees and a cool coloured planting scheme fill the borders which hug the various terraces and a simple water feature hopes to ease the energetic atmosphere of the show."*

*~ Maximillion Design*





# N<sup>TH</sup> Degree

CLERKENWELL



For more information about Nth Degree Clerkenwell and their collections, visit: [www.nthdegree.co.uk](http://www.nthdegree.co.uk)  
Instagram: [@nthdegree\\_uk](https://www.instagram.com/nthdegree_uk), Facebook: [@nthdegreeclerkenwell](https://www.facebook.com/nthdegreeclerkenwell), Pinterest: [@nthdegreeclerkenwell](https://www.pinterest.com/nthdegreeclerkenwell)

If you wish to feature this press release, please link to [www.nthdegree.co.uk](http://www.nthdegree.co.uk)