



RHS Plant Trials and Awards

Canna

Jacquie Gray

Trials Recorder, RHS Garden Wisley

Mike Grant

Botanist, RHS Garden Wisley

September 2003

Canna

In 2002 the Royal Horticultural Society, responding to a considerable renewal of interest in cannas due to an increase in the sub-tropical style of gardening, conducted a trial of *Canna*, the first undertaken by the Society since 1906. RHS plant trials are conducted as part of the RHS' charitable mission to inform, educate and inspire all gardeners. The RHS identifies good, reliable garden plants through its Award of Garden Merit (AGM) scheme after a period of trial.

Objectives

One of the aims of the trial was to encourage the wider cultivation of cannas by creating a spectacular display on the Portsmouth Field. It also enabled us to review the range of new and old cultivars available, and helped to resolve some of the problems of identification. The entries were assessed by members of the RHS Floral Trials Subcommittee and outstanding entries were given the Award of Garden Merit. The entries were also described, pressed and photographed to provide a permanent record and specimens were deposited in the RHS Herbarium (WSY) at Wisley.

Entries

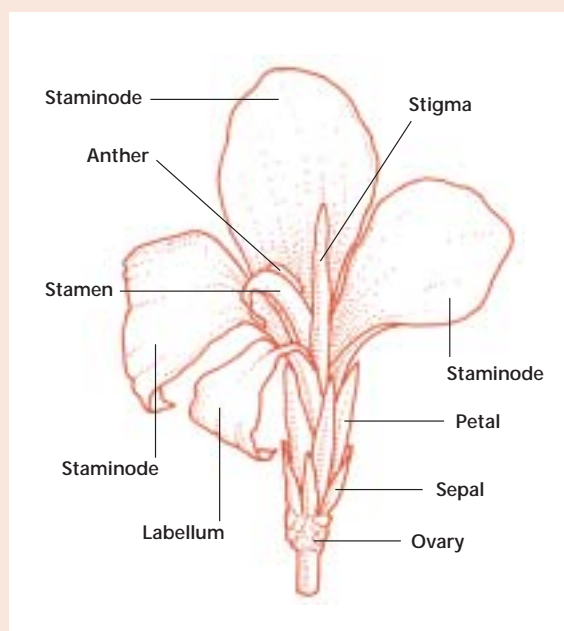
There were 152 entries in the trial submitted as plants by individuals, National Plant Collection holders and public gardens. The Nong Nooch Tropical Gardens of Thailand kindly supplied a range of new cultivars for interest, but not in sufficient quantity to be judged.

Background

Canna is a genus of about ten species, all of which are native to tropical and sub-tropical America, the majority coming from South America. Until the mid nineteenth century, the canna was known chiefly as a starch crop. *Canna edulis* is still grown on a small scale throughout the tropics for its edible rhizomes and has probably been cultivated in Peru for 4,500 years. *Canna indica* is similarly edible and its hard black seeds, which give it the name Indian shot, are used for necklaces, rosaries and rattles.

Cannas were first hybridised for ornamental purposes in the mid 19th century and became very popular in Victorian times - an earlier RHS trial in 1906 had over 270 entries. Their popularity declined in the 20th century until the 1990s when their exotic appeal started to be appreciated again. Most cultivars are complex hybrids, mainly derived from *C. indica*, *C. flaccida*, *C. glauca*, *C. iridiflora* and *C. warscewiczii*. Breeding for ornamental use started in 1848 when Thré Année brought some *Canna* species he had collected in South America home to France. Année's plants were chiefly foliage subjects, but twenty years on a fellow French breeder, Antoine Crozy, succeeded in developing larger flowered cultivars. Towards the end of the nineteenth century, Carl Sprenger in Italy and Wilhelm Pfitzer in Germany were continuing to produce novelties and all these varieties fuelled the sub-tropical bedding craze of the past. The trend in recent years has been to breed shorter cultivars with more stems per rhizome. These plants tend to be bushy and very floriferous, but those who desire the traditional, taller, more imposing varieties still have plenty to choose from, and even the tallest rarely require support.

The structure of the individual blooms is unusual and rather complicated. The true petals are insignificant and the large, colourful staminodes and narrower labellum that resemble petals are actually modified stamens.



Front cover: *C. 'Picasso'*/Tim Sandall

Results of the Trial

22 *Canna* were selected for the Award of Garden Merit [AGM]  H3

C. 'Alaska'	C. 'General Eisenhower'	C. 'Picasso'	C. 'Verdi'
C. 'Amundsen'	C. <i>indica</i> 'Russian Red'	C. 'Ra'	C. 'Whithelm Pride'
C. 'Annaeii'	C. 'Ingeborg'	C. 'Roi Soleil'	C. 'Wyoming'
C. 'Aphrodite'	C. 'Louis Cayeux'	C. 'Schwäbische Heimat'	C. TROPICANNA 'Phasion'
C. × <i>ehemanii</i>	C. 'Musifolia'	C. 'Shenandoah'	
C. 'Erebus'	C. 'Mystique'	C. 'Striata'	

A further 6 cultivars were recommended for the AGM, subject to their being made available to the UK public:

'Delaware', 'Independence', 'Lenape', 'Penn' raised and sent by Longwood Gardens USA

'Bethany' raised and sent by Mr B West

A *C. indica* cultivar discovered and entered by RHS Garden Wisley

H3 = plants hardy outside in some regions or in particular situations or which, whilst usually grown outside in summer, need frost-free protection in winter.

Cultivation

Cannas grow from underground rhizomes that need to be dug up and stored or protected over the winter in a frost-free place. They will usually come into growth in March. Plants for the trial were requested to arrive at Wisley by January and to have three growing points. Entries were potted into 20cm pots, and those with extra growing points were divided into individual sections prior to potting. The plants were grown on in a frost-free greenhouse, where they were fed and watered well until the last frosts, and then gradually hardened off in their pots. Cannas do best in a very rich soil and entries were planted out in the first week of June into a site in full sun that had been manured and rotovated. Three rhizomes of each entry were planted, 50 cm apart for small cultivars and 100cm apart for medium and tall cultivars. Plants were watered by drip irrigation.

Plants for the garden benefit from some shelter from wind, but this is not essential and a mulch is recommended to conserve moisture. Depending on their ultimate size, for block planting of the same cultivar, a spacing of 15-30cm is sufficient, but 45-90cm is needed between different cultivars or other, similar-sized plants. They should be watered and fed well throughout the summer, especially during dry weather.

The rhizomes should be lifted and labelled when the first frosts kill the foliage. Rather than storing in dry sand or vermiculite, they are best left with some soil on and sprinkled with water occasionally to maintain humidity. Over- winter in a frost-free place, ideally at about 6°C. Whilst rhizomes may survive outside through the winter in milder areas of the UK, especially if mulched deeply, they usually return to growth rather late and their flowering period is compromised. Cannas grown in conservatories can be kept in growth all year round.

Pests and Disease

The objectives of the 2002 trial at Wisley suffered a considerable set back due to virus in the plants. Many of the entries were infected before they arrived, and cross-contamination was inevitable once the trial started. As the first plants unfurled their leaves, it was obvious from their distortion and yellow streaking that we had a severe problem with many entries. We were informed that stronger growing cultivars often grew out of the effects as the season progressed, and that some had long been thought to sustain low levels of infection anyway. Although there was serious disfigurement among the ranks in the trial, many of the varieties performed superbly.

Two viruses have been detected in cannas in the UK and may occur together or separately. *Canna* yellow mottle virus (CaYMV) causes distortion, stunting and chlorotic streaks in the leaves. Bean yellow mosaic virus (BYMV) causes a fine pale speckling of the leaves. Tests on the Wisley trial plants confirmed the latter and the former was strongly suspected to be present also. The most seriously affected plants were destroyed before the trial was planted out, but many that remained still exhibited symptoms by the end of the season. Effective control of both viruses depends on eliminating all existing contamination by ruthless roguing of the stock. BYMV has a wide range of hosts and is aphid-vectored, control using insecticides is not practicable. CaYMV is most probably mechanically transmitted in some way and would be best controlled by scrupulous disinfection of knives, fingers etc after each operation.

Other than viruses, cannas in the UK have no specific problems and are largely trouble-free; although slugs and snails can cause damage to new growth in Spring.

Award of Garden Merit *Canna* descriptions

The trial was assessed for the Award of Garden Merit by the Floral Trials Sub-committee using the following criteria:

- impact
- vigour
- habit
- flower (colour and shape)
- foliage (colour, shape and poise)

Numerical colour references to the RHS Colour Chart (2001) are used in the descriptions.

Mike Steigh



H3

C. 'Alaska'.
Sent by Agrexco.

Ivory-coloured flower, attractive glaucous leaf. Fairly short.

Available from the sender in 2004. A robust, open clump. Plant height 150cm. Foliage height 130cm. Leaves green (137A). Staminoles and labellum cream (4D); stamen and stigma yellow (5C); petals yellow. Start of flowering 17 June.



H3

C. 'Amundsen'
Sent by Munich Botanic Garden.

Well-shaped red flowers and good green foliage.

Plant height 170cm. Foliage height 140cm. Leaves mid-green (137A) with pale margin. Staminoles vivid orange-red (44B); labellum as staminoles with some yellow in the throat; stigma yellow; stamen mostly yellow, streaked and edged red; petals yellow-red. Start of flowering 26 July.



H3

C. 'Annaeii'
Sent by Hart Canna.

Very tall, with very large, glaucous green leaves. One of the first canna hybrids, raised about 1850.

Particularly valued for its foliage, it makes a very open clump. Plant height 300cm. Foliage height 230cm. Leaves green (137A) with pale margin. Staminoles and labellum yellow (16A) with peach blush (29A) in the throat; stigma yellow flushed red; stamen red-orange; petals yellow flushed red. Start of flowering 13 August.



H3

C. 'Aphrodite'
Sent by Hart Canna.

Pink, well-shaped flower. A good colour combination with young bronze leaves which become green but retain dark midrib.

Goblet-shaped clump. Plant height 150cm. Foliage height 130cm. Long, narrow leaves are dark, mid-green (137A) with light bronzing to main vein and apex with dark border. Stems purple-bronze. Staminoles salmon-pink (51A); labellum, stigma and stamen slightly richer pink; petals pink-red. Start of flowering 24 June.

The *Canna* Trials



 H3

C. × ehemanii

Sent by RHS Garden Wisley.

Elegant nodding, pink flowers on arching stems. Large, green leaves, with a distinctive bronze edge to the leaf stalk where it clasps the stem.

Spreading stems and gently spreading leaves create a goblet shaped clump. Plant height 190cm. Foliage height 175cm. Leaves green (137A) with pale margin and dark outer edge. Staminodes, labellum and stamen red-purple (61B); stigma red; petals red, ringed yellow-green. Start of flowering 20 June.



 H3

C. 'Ingeborg'

Sent by Hart Canna.

Apricot-orange flowers above wavy bronze foliage.

Plant height 140cm. Foliage height 105cm. Leaves dark green (147A) with main vein lightly purple-bronzed, and a narrow dark margin. Staminodes apricot (30D), flushed pink, especially in throat; labellum pale orange with yellow base; stigma orange-yellow, darker at tip; stamen apricot; petals orange-pink. Start of flowering 3 July



 H3

C. 'Erebus'

Sent by RHS Garden Wisley.

Distinct pale salmon flowers above glaucous green foliage.

Often described as a water canna, but can also be grown in normal conditions. Plant height 175cm. Foliage height 150cm. Leaves glaucous green (N138B) with pale margin. Staminodes strong yellowish-pink (38A); labellum and stamen streaked and edged yellow-pink (38A) over yellow (4C); stigma deep pink at apex, yellow at base; petals yellow-green tinged red. Start of flowering 27 June.



 H3

C. 'Louis Cayeux'

Sent by Great Dixter.

Lots of flowering spikes opening to rich salmon flowers held well clear of the green foliage that has a waxy sheen.

Plant height 150cm. Foliage height 125cm. Leaves olive green (147A) with pale, reddish edge. Staminodes reddish-orange (41B/C); labellum as staminodes with yellow-buff in the throat; stigma yellow with red tip; stamen reddish-orange, flushed orange; petals yellowish-red. Start of flowering 15 July.



 H3

C. 'General Eisenhower'

Sent by RHS Garden Wisley.

A sculptural plant with huge, dark burgundy leaves and attractive orange flowers.

Plant height 140cm. Foliage height 110cm. Leaves dark, olive green (147A), heavily flushed with reddish-bronze, with dark veins (200A), dark red midrib (187B) and dark red margin. Staminodes deep orange (31A), blushed and speckled red-orange (34A); labellum and stamen as staminodes with yellow in the throat; stigma dark orange-yellow. Start of flowering 29 July



 H3

C. 'Musifolia'

Sent by RHS Garden Wisley.

Splendid foliage plant. Elegantly held leaves with attractive dark edges and red-tinted veins.

Particularly valued for its foliage, it has thick stems and huge, gently spreading leaves. Overall height 300cm. Leaves yellow-green (137C) with slightly paler streaks, darker towards the tip and margin; main vein is impressed, red at base. Rarely flowers when grown outside in the UK.



 H3

C. 'Mystique'

Sent by Great Dixter.

An attractive foliage plant with dark bronze foliage with very small red flower.

Plant height 230cm. Foliage height 185cm. Leaves olive green (darker than 138A), heavily flushed with purple-bronze (187A); main vein red-purple (187B) with green middle. Staminoles, labellum and stamen a blend of dusky pink (47B) and apricot (42C) streaks; stigma and petals red. Start of flowering 5 September.



 H3

C. 'Roi Soleil'

Sent by Pierre Turc.

Brilliant red flower and handsome foliage.

Plant height 180cm. Foliage height 165cm. Leaves mid-green (137B) with a red border and pale edge. Staminoles vivid orange-red (44A); labellum and stamen as staminodes with yellow throat, streaked red; stigma yellow margined red; petals red tinged yellow. Start of flowering 28 June.



 H3

C. 'Picasso'

Sent by Hart Canna.

Large individual flowers are yellow, strikingly spotted red.

Plant height 155cm. Foliage height 120cm. Leaves green (146A). Broad staminodes are yellow (13B) spotted red (N30A); labellum and stamen yellow (13B) streaked red (N30A); stigma orange, unspotted; petals yellow, lightly tinged red at base. Start of flowering 26 June.



 H3

C. indica 'Russian Red'

Sent by Hart Canna.

Bronze foliage held at a wider angle than 'Purpurea'.

Particularly valued for its foliage. Plant height 290cm. Foliage height 265cm. Leaves dark olive green (147A), heavily flushed with reddish bronze (redder than 200B), midrib red (183C), margin pale. Staminoles orange (30D), flushed pink (39B) towards margin; labellum and stamen as staminodes but slightly redder in the throat; stigma dark orange; petals red. Start of flowering 6 August.



 H3

C. 'Ra'

Sent by RHS Garden Wisley.

Slender stems carry clean, pale yellow flowers over glaucous green foliage.

Often described as a water canna, but can also be grown in normal conditions. Makes an open clump that quickly spreads. Plant height 180cm. Foliage height 155cm. Leaves are narrow, green (137A), distinctly glaucous with a pale margin. Staminoles and labellum brilliant yellow (7A); stigma yellow; stamen yellow but slightly more orange at tip; petals yellow with slight green flush. Start of flowering 17 June.



 H3

C. 'Schwäbische Heimat'

Sent by Munich Botanic Garden.

Rich red flower above green foliage.

Upright stems clothed to the ground with spreading leaves. Plant height 155cm. Foliage height 145cm. Leaves mid-olive green (slightly darker than 146A), with a pale margin. Staminoles and labellum bluish-red (53C); stigma, stamen and petals red. Start of flowering 13 August.

* Plants of TROPICANNA in the trial appeared identical to those submitted as 'Durban'. As TROPICANNA now has Plant Breeders' Rights, its cultivar name 'Phasion' is a statutory denomination that takes legal precedence over any other names, even, if those names can be shown to have priority. Additionally, there is good evidence to suggest that there is another cultivar called 'Durban' (with red flowers as opposed to orange) which has a prior claim to that name.



 H3

C. 'Shenandoah'

Sent by RHS Garden Wisley.

Attractive large, showy, pink flowers, and bronze foliage. An old cultivar dating from 1894.

Plant height 160cm. Foliage height 145cm. Leaves dark olive green (147A), heavily bronzed especially on the veins with dark margins. Staminoles, labellum and stamen pink (50C), blushed slightly darker pink (50B); stigma pink, tinged orange; petals red. Start of flowering 6 June.



 H3

C. 'Verdi'

Sent by RHS Garden Wisley.

Well-shaped spike of tangerine flowers with a yellow throat. Wonderful colour combination with dark, bronzed foliage.

Elegant, upright stems and leaves. Plant height 160cm. Foliage height 135cm. Leaves large, dark green (147A); main veins deep purple-bronze (187B – N187A); margin dark. Staminoles bright orange-red (N30A) with yellow in the throat (14C-D); labellum as staminoles; stigma mostly yellow but with dark red tip; stamen orange with yellow inner edge; petals reddish yellow. Start of flowering 6 June.



 H3

C. 'Striata'

Sent by RHS Garden Wisley.

Orange flowers are held well above the attractive foliage.

Particularly valued for its yellow-veined foliage. Plant height 190cm. Foliage height 140cm. Leaves green (137A) with contrasting veins that are yellow (mostly 13B) but paler (13D) in places; margin dark. Staminoles, labellum and stamen bright orange (28B), blushed darker red (32A) in places and with yellow (15A) margin; stigma deep orange-red; petals strongly flushed red. The flower has a crumpled silk appearance. Start of flowering 13 August.



 H3

C. 'Whithelm Pride'

Sent by Agrexco.

Salmon-pink flowers on purple stems, held above dark, bronzed green leaves.

Available from the sender in 2004. Plant height 145cm. Foliage height 125cm. Leaves green, moderately dashed with bronze; dark margin. The broad staminoles and the labellum are pink (52D) with deeper pink (52C), flushing apricot (32C) as flower ages; stigma orange-peach; stamen peach with some yellow; petals copper. Start of flowering 18 June.



 H3

C. TROPICANNA* ('Phasion')

Sent by Hart Canna. Also sent as 'Durban' by Great Dixter and RHS Wisley.

Foliage is strikingly striped with green, cream and pink stripes. Vivid orange flowers.

Plant height 160cm. Foliage height 130cm. Leaves are very dark olive green (147A), striped with pale green-yellow and red veins (46C). Staminoles orange (26A), blushed pink (42D) especially on the edges; labellum and stamen are the same as the staminoles with some yellow in the throat; stigma orange; petals pink-red. Start of flowering 26 July.



 H3

C. 'Wyoming'

Sent by RHS Garden Wisley.

Very tall, striking plant with orange flowers and dark bronze foliage.

Plant height 230cm. Foliage height 180cm. Leaves green (137A), heavily flushed with dark bronze (200A); main vein edged purple-red (187B); dark margin. Staminoles and labellum orange (25A), blushed and edged red (33A); stigma yellow-peach; stamen yellow-peach with yellow throat. Start of flowering 3 July.

Canna selection guide

Cannas in the garden

Cannas can look good as single specimens, but tend to look more comfortable in groups. The foliage is surprisingly varied and lends an instant tropical effect to any planting scheme, as well as associating well with herbaceous perennials. Their season of interest also happily coincides with the hotter colours found in *Helenium* and *Dahlia*.

Flowering outside can extend from mid June, for the shorter cultivars, to first frost. Some of the taller ones may not start until mid August, giving plenty of time to enjoy the foliage. The individual flowers last a day or two and on many cultivars are shattered by rain, but each inflorescence usually has plenty of eager buds. Most benefit aesthetically from having the dead flowers picked off.

Mike Steigh



Mixed Border at RHS Garden Wisley

Name	Flower Colour
C. 'Alberich'	Apricot/pink
C. 'Strasbourg'	Bright red
C. 'Rosa'	Deep pink
C. 'Apricot Dream'	Salmon-buff
C. 'Déliabab'	Reddish orange
C. 'Südfunk'	Flame orange
C. 'Ingeborg'	Orange
C. 'General Eisenhower'	Deep orange
C. 'Felix Ragout'	Yellow
C. 'Louis Cayeux'	Red
C. 'Picasso'	Yellow, spotted dark red
C. 'Fatamorgana'	Deep pink
C. 'Brillant'	Rich red
C. 'Verdi'	Tangerine with yellow marks
C. 'Louis Cottin'	Ember yellow
C. 'Saladin'	Salmon with apricot tinge
C. 'Red Wine'	Pink-red
C. 'Phasion' TROPICANNA	Orange
C. 'Striata'	Orange
C. × <i>ehemania</i>	Pink
C. 'Roi Soleil'	Red
C. 'Cleopatra'	Yellow, red or bicoloured
C. 'Australia'	Orange-red
C. 'Tirol'	Salmon-pink
C. indica 'Purpurea'	Orange
C. 'Wyoming'	Orange
C. 'Mystique'	Cherry red
C. 'Annaeei'	Apricot
C. 'Orange Perfection'	Orange
C. 'Musifolia'	Red
'Water canna', which can also be grown in normal conditions	
C. 'Endeavour'	Raspberry red
C. 'Ra'	Yellow
C. 'Erebus'	Salmon

All *Canna* detailed below received positive comments from the judging Committee and are listed in the *RHS Plant Finder 2003-2004*

Foliage	Height*	Comment
Green	Short (under 1m)	Seed pods are decorative.
Green	Short (under 1m)	Rich flower colour.
Green	Short	Very floriferous.
Green	Short	Flowers of exceptional colour held clear of foliage.
Bronze	Short	Architectural buds.
Bronze	Short	Would suit pot culture.
Bronze	Short	🏆 Apricot-orange flowers above wavy bronze foliage.
Bronze	Short	🏆 A sculptural plant with huge, bronze leaves and attractive orange flowers.
Green	Medium	Clear colour.
Green	Medium	🏆 Rich salmon flowers. Foliage has a waxy sheen.
Green	Medium	🏆 Large, yellow flowers are strikingly spotted red.
Green	Medium	Floriferous, rich deep pink.
Green	Medium	Attractive foliage.
Green, bronze veins	Medium	🏆 Wonderful colour combination with dark, bronzed foliage.
Bronze	Medium	Flowers have a translucent quality.
Bronze	Medium	Very attractive colour combination.
Bronze	Medium	Very handsome dark foliage.
Variegated (purple/pink)	Medium	🏆 Foliage is strikingly striped; vivid orange flowers.
Variegated (green/yellow)	Tall	🏆 Green and yellow striped foliage; flowers orange.
Green	Tall	🏆 Elegant nodding, pink flowers on arching stems.
Green	Tall	🏆 Brilliant red flower and handsome foliage.
Green	Tall	Attractive maroon streaking on buds. A spectacular curiosity.
Bronze	Tall	Darkest leafed cultivar, but can be blown over.
Bronze	Tall	Attractive flower and dark olive foliage, flushed bronze.
Bronze	Tall	Upright, translucent leaves catch sunlight at either end of the day.
Bronze	Very tall	🏆 A striking plant with orange flowers and dark bronze foliage.
Bronze	Very tall	🏆 Dark bronze foliage with very small red flower.
Green	Very tall	🏆 Very tall, with very large, glaucous-green leaves.
Green	Very Tall	Handsome foliage. Reputedly has some winter-hardiness.
Green	Very tall	🏆 Elegantly held leaves have attractive dark edges and red-tinted veins.
Glaucous green	Tall	Good foliage.
Glaucous green	Tall	🏆 Slender stems. Clean, light yellow flowers over glaucous-green foliage.
Glaucous green	Tall	🏆 Distinct pale salmon flowers above glaucous-green foliage.

*Cannas in the well-fed and well-irrigated trial at Wisley exceeded the height classifications often associated with them. Heights described here are as the cultivars performed in the trial: short (under 1.4m), medium (1.4m to 1.7m), tall (1.7m to 2m) and very tall (over 2m).

Awards subject to availability

The following cannot receive the AGM recommended to them until they are available for purchase in the UK



C. 'Bethany'

Sent by Brian West.

Flowers like 'Florence Vaughan' on leaves similar to 'Striata'.

Plant height 160cm. Foliage height 110cm. Leaves green (137A) striped with yellow (7B) veins; margin pale. Staminoles yellow (12A-B), heavily blotched in centre with orange (25B); labellum mostly orange (25A-B), yellow in the throat; stigma yellow, tipped orange; stamen yellow blotched orange; petals two yellow, one yellow flushed red toward tip. Start of flowering 22 July.



C. indica cultivar

Sent by RHS Garden Wisley.

An excellent foliage plant. The attractively translucent, large paddle shaped leaves are green with a fine purple margin, and dark stem. Well furnished from the base. Flowers are insignificant, late, and bright red.

Plant height 240cm. Foliage height 215cm. Stems bronze-copper. Leaves dark green (147A), slightly bronzed on lower veins and margin. Staminoles and stamen orange (25A), darker orange (31A) on reverse; labellum as staminoles, flushed lightly yellow in the throat; stigma orange-red; petals red. Start of flowering 15 July.

Subject to naming and availability



C. 'Delaware'

Sent by Longwood Gardens, USA.

Orange-pink flower, green leaf. Very floriferous.

Upright stems clothed to the ground with gently spreading leaves. Plant height 140cm. Foliage height 110cm. Leaves yellow-green (146A-B). Staminoles reddish pink (39A-B); labellum reddish pink with a touch of apricot in the throat; stigma orange; stamen streaked orange-yellow; petals red-orange. Start of flowering 26 June.



C. 'Lenape'

Sent by Longwood Gardens, USA.

Extremely floriferous, yellow flowers, which are freckled red.

Plant height 140cm. Foliage height 106cm. Leaves mid green (137B); pale margin. Staminoles yellow (13C), dotted orange-red (32A); labellum as staminoles, more streaked in the throat; stigma orange-yellow; stamen yellow streaked orange-red; petals yellow flushed green. Start of flowering 14 June.



C. 'Independence'

Sent by Longwood Gardens, USA.

Short, floriferous. Has clean, lemon-yellow flowers which fade to cream, held on well-shaped spikes above green foliage.

Plant height 135cm. Foliage height 105cm. Leaves green (147A), slightly glaucous; pale edge. Staminoles and labellum lemon yellow (12A); stigma and stamen yellow; petals yellow. Start of flowering 6 June.



C. 'Penn'

Sent by Longwood Gardens, USA.

Floriferous, coral-red flowers, and glaucous green leaves.

Plant height 110cm. Foliage height 80cm. Leaves dark, mid green (137A); edge bronze-purple. Staminoles pink (38A-B); labellum pink with cream-yellow (18B) in the throat; stigma and stamen orange-red (41A) with yellow; petals red. Start of flowering 26 June.

Background notes

RHS Trials

From the very early days of its foundation The Royal Horticultural Society has undertaken trials, drawing on the extensive knowledge of specialists, scientists and professional gardeners. Today there are 13 different committees whose members each devote their time and expertise to the trials of plants in which they have a lifetime's knowledge. In 2002 there were over 60 separate trials being held at RHS gardens, which demonstrated the plants and their cultivation, and during these the subject of pest and disease prevention and cure was investigated, as well as matters concerning the correct naming of plants. The combination of committee members, who recommend cultivars as being excellent choices for the general gardener to grow, and the resources of the Society's professional horticulturists and scientific staff enables the RHS to provide sound and useful information to gardeners and the horticultural trade.

Floral Trials Sub-committee.

Chairman: Tony Lord,

Vice-Chairmen: Roy Cheek, Pam Schwerdt

Bill Boardman	John Paton
Bob Brown	John Ravenscroft
John Coke	Graham Rice
Nigel Colborn	Paul Roebuck
David Creese	Jean Sambrook
Ivan Dickings	Keith Sangster
Fergus Garrett	Terry Smale
John Gibson	Mike Smallwood
Diana Hart Dyke	Brian Talman
Tony Hender	Ray Waite
Sibylle Kreutzberger	Victoria Wakefield
Christopher Lloyd	Stuart Williams
Alison Mulvaney	

Senders of plants to the trial of *Canna*

Agrexco UK, Camel House, 4F Swallow Way, Hayes, Middlesex UB3 1DQ.

Brian West, c/o Trials Office, RHS Garden Wisley, Woking, Surrey GU23 6QB.

Country Lane Nursery, Stellenbosch, South Africa (agent Hart Canna).

Great Dixter Nurseries, Northiam, Nr. Rye, East Sussex TN31 6PH.

Hart Canna, 25-27 Guildford Road West, Farnborough, Hampshire GU14 6PS.

Ian Cooke, Highfield House, University of Nottingham.

James Ranger, c/o Trials Office, RHS Garden Wisley, Woking, Surrey GU23 6QB.

Longwood Gardens, PO Box 501, Kennett Square, Pennsylvania 19348-0501 USA.

Martin Davis, c/o Trials Office, RHS Garden Wisley, Woking, Surrey GU23 6QB.

Munich Botanical Gardens (agent Hart Canna).

Nong Nooch Tropical Gardens, KM 163 Sukhumvit Hwy, Sattahip, Chonburi 20250, Thailand.

Oakland Nurseries, 147 Melton Rd., Burton-on-the-Wolds, Loughborough, Leicestershire LE12 5TQ.

English Heritage, Osborne House, East Cowes, Isle of Wight PO32 6JY.

Ets Pierre Turc et Fils, Les Richelets, 49630 Mazé, France (agent Hart Canna).

Restormel Borough Council, The Parks Officer, 39 Penwinnick Rd., St. Austell, Cornwall PL25 5DR.

RHS Garden Wisley, Woking, Surrey GU23 6QB.

Sampford Shrubs, Sampford Peverell, Tiverton, Devon EX16 7EN.

Acknowledgements

Plant descriptions by Barry Phillips (RHS Herbarium)

Photography by RHS Herbarium and Mike Sleight (RHS).

Illustration by Niki Simpson

Both the National Plant Collection holders of *Canna* have provided invaluable advice; Ian Cooke particularly during the planning stages and Keith Hayward who gave very freely of his time during the growing season.

Chris Prior, Head of Plant Pest & Disease Science

Floral Trials Sub-committee.

RHS staff in Trials, Herbarium, Botany and Propagation departments.

Further reading

Anon. (1908) Cannas at Wisley 1906-07. *Journal of the Royal Horticultural Society* **33**:212-222.

Anon (1908) Cannas out of doors at Wisley 1908. *Journal of the Royal Horticultural Society* **34**:299-302.

Cooke, I. (2001) *The Gardener's Guide to Growing Cannas*. David & Charles, Newton Abbot, Devon.

Grant, M. (2003) A feast of flowers and foliage. *The Garden* **128** (6):437-439

Hayward, K. (2000) *Canna Handbook*. Hart Canna, Farnborough, Hampshire.

RHS Advisory Leaflet, No.801, May 2003.

Royal General Bulbgrowers Association (1991) *International Checklist for Hyacinths and Miscellaneous Bulbs*. KAVB, Hillegom, The Netherlands.

Segeren, W & Maas, PJM (1971) The genus *Canna* in northern South America. *Acta Botanica Neerlandica*. **20**(6): 663-680.

All text and images © Copyright RHS 2003

ISSN: 1477-9153 (print)

ISSN: 1447-9161 (online)

We welcome comments on any aspect of this report.



Trials Office, RHS Garden, Wisley, Woking, Surrey GU23 6QB
e-mail: trials@rhs.org.uk

www.rhs.org.uk

Reg charity no. 222879

All text and images © Copyright RHS 2003

ISSN: 1477-9153 (print)

ISSN: 1447-9161 (online)