



2026 RHS SANDRINGHAM FLOWER SHOW SHOW GARDEN EXHIBITORS

Please note: All information is provided by exhibitors and is subject to change. For images and further information including full planting lists, please contact showspr@rhs.org.uk

1) *The Thomas Gainsborough Garden*

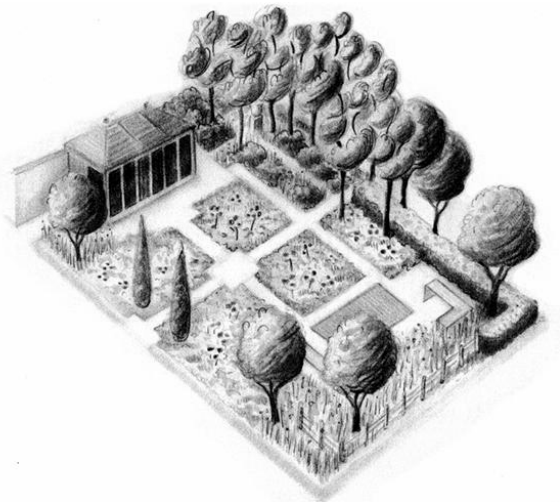
Designer: Frederic Whyte
Contractor: D Taylor Landscapes

Media Contact: Frederic Whyte
Media Contact Details: 07551 418529 / fw@fredericwhyte.com

The Thomas Gainsborough Garden launches the tercentenary celebrations of the artist Thomas Gainsborough's birth and is inspired by the Suffolk countryside.

The garden is a living canvas of Gainsborough's cultural landscape. His paintings have informed the garden's naturalistic, romantic perimeters and his use of chiaroscuro, the creation of contrast between light and dark, is reflected in layers of light and shade.

The exhibit's features reference elements found in Gainsborough's own garden. A specimen mulberry tree mimics a 400-year-old tree found there and the use of limewash mirrors the style of his Suffolk house.



Planting/Colour Scheme

The garden will feature two fastigate golden yews, referencing those situated in Gainsborough House. The prominence of roses in the ornamental planting echoes the floral details found in his portraits and reference the colours found in Gainsborough's portraits. A stylized hedgerow consisting of *Acer campestre*, *Betula pendula*, *Crataegus monogyna* and *Fagus sylvatica* is inspired by the Suffolk landscape.

2) 100 Sweet Summers

Designer: Kitti Kovacs
Contractor: Cobham Court Landscaping
Sponsor: QVC

Media Contact: Kitti Kovacs

Media Contact Details: 07411 350296 / kitti.kovacs@gmail.com

The *100 Sweet Summers* garden explores the balance between nostalgia and innovation through the story of a retired couple who cherish life's simple pleasures. The garden celebrates the couple's joyful mid-century youth, yet at the same time, reflects their forward-thinking outlook and commitment to sustainability.



The garden centres around an oak-framed cabin decorated with recycled wine bottles, collected from bottles shared with friends and family over many happy years. Surrounding the cabin are favourite flowers from their past, creating a colourful and nostalgic retreat where they can enjoy quiet moments and welcome visits from their grandchildren. Drawing on a love of craft, a handmade swing, parasol and decorative curtains add a personal touch to the space.

The garden celebrates cherished memories of the past while embracing the possibilities of a more sustainable future. Innovative Bioo panels within the space harness natural biological processes to generate electricity, providing sustainable lighting for the garden. This technology demonstrates how nature and innovation can work together, reflecting the couple's hope to protect and nurture the environment for future generations.

Planting/Colour Scheme

The planting design features *Zinnia*, single dahlias, snapdragons, *Canna* and *Rhus* varieties, all plants that were once widely loved but are now sometimes overlooked in modern planting schemes. Dahlias play an important role in the planting, providing vibrant late-season colour and acting as statement plants within the borders.

The planting palette will combine warm shades of orange, coral, apricot and pink with softer lemon and cream tones. The warmer tones are balanced out with cooler shades of purple, blue and soft pink coming through in the *Salvia*, *Nepeta*, *Veronica* and *Geranium*.

3) RNIB Talking Books Garden

Designer: Paul Hervey-Brookes
Contractor: G K Wilson
Sponsor: RNIB

Media Contact: Richard Wevill

Media Contact Details: 07749 455653 / Richard.Wevill@rnib.co.uk

The *RNIB Talking Books Garden* celebrates the 90th anniversary of RNIB Talking Books, a service which provides thousands of people with sight-loss access to a huge range of titles, from much-loved classics to educational texts.



Drawing on the designer's library of imagination, the garden features a sinuous curved shingle wall with ladders reaching to the sky, a nod to old libraries.

Visitors will discover the positive impact gifts left in wills have, and how this helps RNIB to deliver support to blind and partially sighted people.

Planting/Colour Scheme

The key statement plants in the garden include *Betula* and *Miscanthus*, which have been chosen for the sounds they create.