



2024 RHS FLOWER SHOW TATTON PARK TERRACE GARDENS

Please note: This information is subject to change. For images and further information including full planting lists, please contact showspr@rhs.org.uk

1) *The Orchid Garden*

Designer: Tom Saunders

Sponsors: Murray and Liz Saunders, Bill and Pat Davies, Judith Spilsbury, Protect the Andes

Contractor: PJW Landscapes and RJH Drystone Walling

Media Contact Name: Tom Saunders

Media Contact Details: skylarkgd@outlook.com / 077910139347

This garden, inspired by the designer's South American travels, celebrates orchids, local craftsmanship and wildflowers. After seeing orchids growing in their natural ecosystem in South America, the designer was inspired to grow orchids domestically and set them within the dry-stone walls typical of rural England. This is what you can see in *The Orchid Garden*, with exotic orchids set within the dry-stone greenhouse. The garden also features a rustic dry-stone wall spiral, surrounded by wildflowers. This allows the garden to develop its own ecosystem, set within the shelter of the walls. The naturalistic grass planting in the garden is designed to cope with the condition of the Peak District, where the garden will be relocated, and gives the garden a natural movement.



Planting and colour scheme

The colour scheme is eclectic, with bright bursts of wildflowers and a colourful array of orchids.

The planting is entirely naturalistic and designed to cope with the conditions of the Peak District.

Relocation

The garden will be relocated to David Ross Plants. This nursery is set within the Peak District which is part of the inspiration of the garden.

2) The Secret Garden: For Us, By Us

Designer: Hilary Newhall

Sponsors: This Is Me Agency

Contractor: GK Wilson Garden and Landscape Consultancy LTD and Everest Garden Landscapes

Media Contact Name: Nikkie Mort

Media Contact Details: nikkie.mort@smartpasupport.com / 07788510999

This garden takes inspiration from the beloved childhood story, *The Secret Garden*. High planting and fencing reflect the story's enclosed sanctuary, and the space provides both peace and sensory stimulation.

As the designer is autistic, she has designed a safe space for autistic individuals, with the York stone paving forming a golden infinity symbol, to represent the autistic spectrum and the importance of inclusion. The rainbow-topped pergola signifies support for the LGBTQ+ community and reiterates the theme of inclusion. Bespoke seating in the garden has been designed for varying sensory needs, some untextured on one side, for those who are sensory avoidant, and a more textured side to appeal to those who are sensory seeking. The bubble fountain, which pulses at 72bpm to mimic the human heartbeat, provides a soothing backdrop.



Planting and colour scheme

Planting is varied within the garden, ranging from deliberately restrained areas, for sensory-avoidant individuals, to wilder planting for sensory-seeking people. Architectural plants such as bamboo and bronze fennel have been utilised to frame the garden.

All the plants are edible, and the designer has incorporated a barbeque, to boil water for herbal tea. Key structural plants such as golden chard and architectural globe artichokes contribute to the yellow and purple colour scheme.

3) Big Picture Garden

Designer: Sophie Godber, Spacecraft Garden Design Ltd

Sponsors: Big Picture Financial Planning Ltd

Contractor: High Peak Groundwork Construction

Media Contact Name: Sophie Godber

Media Contact Details: sophie@spacecraftgd.co.uk / 07843422492

This garden makes innovative use of found objects and materials sourced from a local 19th century farmstead, restoring and refreshing them to create a cohesive and original space. Everything about the garden is designed to appeal to the modern conscious consumer, with the intention to demonstrate that building a new garden doesn't need to cost the earth. The design incorporates a vertical green garden system to maximise planting space and improve air quality. The edible landscaping encourages visitors to consider incorporating edibles into their own planting, so they can reduce their reliance on store-bought produce and connect with nature. Materials salvaged from this Peak District farmstead include a bespoke bicycle chain feature for climbers, and a planter created from spades taken from a defunct vintage plough.



Planting and colour scheme

The space is rich with homegrown produce, like *Curcubita moschata* 'Tromoncino', a quirky courgette which demonstrates vertical food growing opportunities. Apple trees, carrots, mint and strawberries are also incorporated into the planting.

The garden is bursting with vibrant blooms, with a colour scheme ranging from deep blues and violets to punchy reds and orange. The garden will also feature a sweet pea screen.

Relocation

The garden will be relocated to a private garden in a Peak District village less than 4 miles from the location of the historic farmstead.

4) The Corten Garden

Designer: Evergreen Cheshire Limited
Contractor: Evergreen Cheshire Limited

Media Contact Name: Melanie McAnaw

Media Contact Details: mel@evergreencheshireltd.co.uk / 07867515308

This garden has been designed to create a plant loving space, that can bring colour and life to a small-scale garden, whilst remaining functional. Boasting as a central feature the use of Corten metal to form the raised beds and central arch within the garden, the design creatively uses the space to fabricate 'rooms'; within the garden, to create a useful family space.



Planting and colour scheme

The garden has a prairie-style planting scheme, with decorative grasses, colourful verbena and climbing jasmine providing interest throughout the year.

Relocation

The garden will be rebuilt in its entirety at the Evergreen Cheshire Nursery.

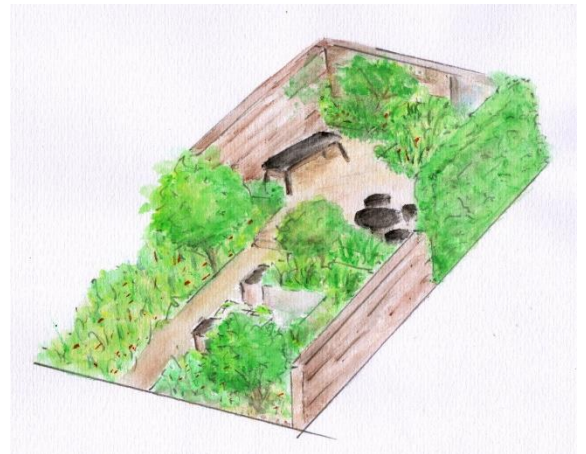
5) Glean

Designer: Christine Leung

Media Contact Name: Iga Kowalska-Owen

Media Contact Details: igakowalska@hotmail.com / 07832259512

This garden's inspiration is fresh local food. It is designed to be an area where you can unwind though cooking - a small space in the garden to grow, harvest and experiment with flavours. The build is economical but incorporates luxury items for cooking to bring people and produce together. Weeds and wildflowers sprout from the rubble and sand to create a meadow for wildlife and drainage, highlighting the resilience of urban gardens. The majority of planting is perennial, and all plants have edible or medicinal uses.



Planting and colour scheme

The colour scheme for this garden is warm oranges and yellows, contrasting with cooling hues of blues and purples, and planting has been designed to reflect urban gardens, with mini meadows and plants commonly used in community growing projects.

Relocation

The garden will be relocated to the Bootle Together Community Allotment in Bootle, Merseyside. This is a new site for volunteers to come together to learn to grow food. Any surplus produce will be given to the South Sefton Foodbank.